

### Anti-VMA2 antibody [13D11B2] ab113684

**2 References**   **1 图像**

#### 概述

产品名称	Anti-VMA2抗体[13D11B2]
描述	小鼠单克隆抗体[13D11B2] to VMA2
宿主	Mouse
经测试应用	适用于: ICC/IF, WB
种属反应性	与反应: <i>Saccharomyces cerevisiae</i>
免疫原	Full length native protein (purified). This information is considered to be commercially sensitive.
阳性对照	Yeast membranes
常规说明	<p>This antibody clone is manufactured by Abcam. If you require a custom buffer formulation or conjugation for your experiments, please contact <a href="mailto:orders@abcam.com">orders@abcam.com</a>.</p> <p>The Life Science industry has been in the grips of a reproducibility crisis for a number of years. Abcam is leading the way in addressing this with our range of recombinant monoclonal antibodies and knockout edited cell lines for gold-standard validation. Please check that this product meets your needs before purchasing.</p> <p>If you have any questions, special requirements or concerns, please send us an inquiry and/or contact our Support team ahead of purchase. Recommended alternatives for this product can be found below, along with publications, customer reviews and Q&amp;As</p> <p>Product was previously marketed under the MitoSciences sub-brand.</p>

#### 性能

形式	Liquid
存放说明	Shipped at 4°C. Store at +4°C.
存储溶液	<p>pH: 7.5</p> <p>Preservative: 0.02% Sodium azide</p> <p>Constituent: HEPES buffered saline</p>
纯度	Proprietary Purification
纯化说明	Near homogeneity as judged by SDS-PAGE (purity >95%). The antibody was produced in vitro using hybridomas grown in serum-free medium, and then purified by biochemical fractionation.
克隆	单克隆

克隆编号	13D11B2
同种型	IgG1
轻链类型	kappa

应用

The Abpromise guarantee

Abpromise™承诺保证使用ab113684于以下的经测试应用

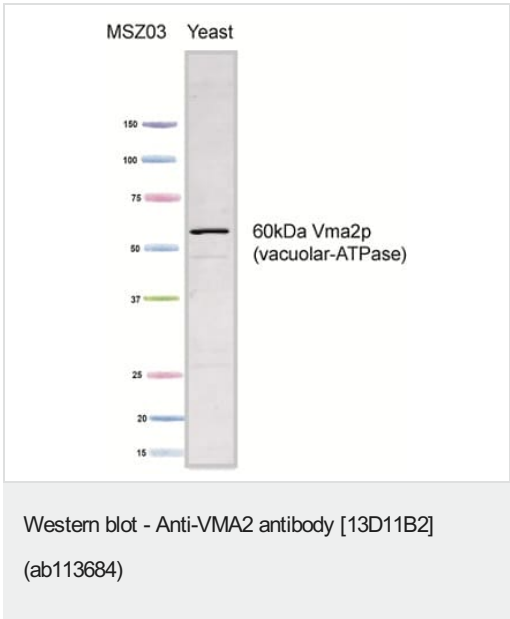
“应用说明”部分 下显示的仅为推荐的起始稀释度;实际最佳的稀释度/浓度应由使用者检定。

应用	Ab评论	说明
ICC/IF		Use a concentration of 20 µg/ml.
WB		Use a concentration of 0.25 - 1 µg/ml. Detects a band of approximately 58 kDa (predicted molecular weight: 58 kDa).

靶标

功能	Non-catalytic subunit of the peripheral V1 complex of vacuolar ATPase. V-ATPase is responsible for acidifying a variety of intracellular compartments in eukaryotic cells. It is an electrogenic proton pump that generates a proton motive force of 180 mv, inside positive and acidic, in the vacuolar membrane vesicles.
序列相似性	Belongs to the ATPase alpha/beta chains family.

图片



Anti-VMA2 antibody [13D11B2] (ab113684) + Yeast whole cell lysate at 15 µg

Developed using the ECL technique.

Performed under reducing conditions.

**Predicted band size:** 58 kDa

**Please note:** All products are "FOR RESEARCH USE ONLY. NOT FOR USE IN DIAGNOSTIC PROCEDURES"

### **Our Abpromise to you: Quality guaranteed and expert technical support**

---

- Replacement or refund for products not performing as stated on the datasheet
- Valid for 12 months from date of delivery
- Response to your inquiry within 24 hours
  
- We provide support in Chinese, English, French, German, Japanese and Spanish
- Extensive multi-media technical resources to help you
- We investigate all quality concerns to ensure our products perform to the highest standards

If the product does not perform as described on this datasheet, we will offer a refund or replacement. For full details of the Abpromise, please visit <https://www.abcam.cn/abpromise> or contact our technical team.

### **Terms and conditions**

---

- Guarantee only valid for products bought direct from Abcam or one of our authorized distributors