

# Anti-Vitellogenin antibody ab36881

[1 References](#) [2 图像](#)

### 概述

产品名称	Anti-Vitellogenin抗体
描述	兔多克隆抗体to Vitellogenin
宿主	Rabbit
经测试应用	适用于: ELISA, WB
种属反应性	与反应: Fish
免疫原	Vitellogenin purified from plasma of 17 beta estradiol treated Arctic char.
常规说明	<p>The Life Science industry has been in the grips of a reproducibility crisis for a number of years. Abcam is leading the way in addressing this with our range of recombinant monoclonal antibodies and knockout edited cell lines for gold-standard validation. Please check that this product meets your needs before purchasing.</p> <p>If you have any questions, special requirements or concerns, please send us an inquiry and/or contact our Support team ahead of purchase. Recommended alternatives for this product can be found below, along with publications, customer reviews and Q&amp;As</p>

### 性能

形式	Liquid
存放说明	Shipped at 4°C. Store at +4°C short term (1-2 weeks). Store at -20°C or -80°C. Avoid freeze / thaw cycle.
存储溶液	<p>pH: 7.40</p> <p>Preservative: 0.1% Sodium azide</p> <p>Constituents: 1% BSA, 0.87% Sodium chloride, 1.64% Sodium phosphate</p>
纯度	Protein G purified
克隆	多克隆
同种型	IgG

### 应用

**The Abpromise guarantee** Abpromise™ 承诺保证使用ab36881于以下的经测试应用

“应用说明”部分 下显示的仅为推荐的起始稀释度;实际最佳的稀释度/浓度应由使用者检定。

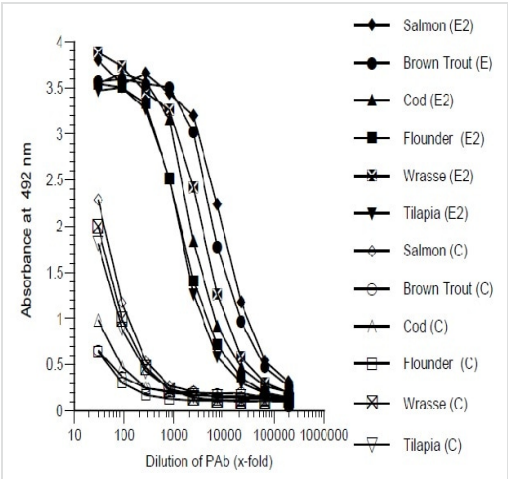
应用	Ab评论	说明
ELISA		Use at an assay dependent dilution.
WB		Use at an assay dependent dilution. Predicted molecular weight: 183 kDa.

靶标

**相关性** Vitellogenin (Vg) is an egg yolk precursor protein expressed solely in female fish and is dormant in male fish, but in the presence of estrogenic EDCs, male fish can express the Vg gene but in a dose dependent manner. The use of Vg gene expression in male fish can be used as a molecular marker of exposure to estrogenic Endocrine Disrupting Chemicals (EDCs).

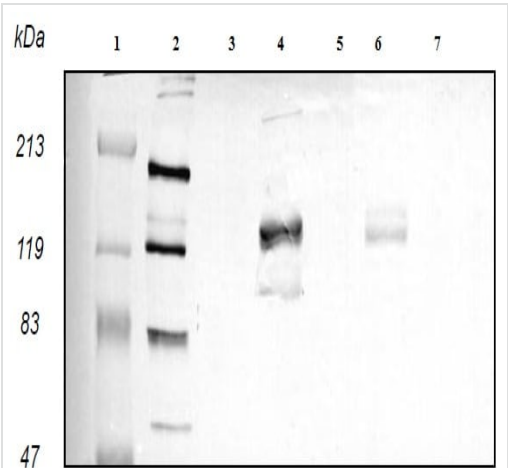
**细胞定位** Secreted

图片



ELISA - Anti-Vitellogenin antibody (ab36881)

Coating: Plasma (diluted 1:1000) from 17 beta-estradiol treated (E2), sexually mature female (E) or control (C) fish. Primary antibody: PO-1



Western blot - Anti-Vitellogenin antibody (ab36881)

All lanes : Anti-Vitellogenin antibody (ab36881) at 1/3000 dilution

- Lane 1 : MW standard
- Lane 2 : Salmon (E2)
- Lane 3 : Salmon (C)
- Lane 4 : Cod (E2)
- Lane 5 : Cod (C)
- Lane 6 : Carp (E2)
- Lane 7 : Carp (C)

Predicted band size: 183 kDa

Samples: Plasma (1:200, 10 µl/well) from 17 beta-estradiol treated (E2) or control (C) fish.

**Please note:** All products are "FOR RESEARCH USE ONLY. NOT FOR USE IN DIAGNOSTIC PROCEDURES"

### **Our Abpromise to you: Quality guaranteed and expert technical support**

---

- Replacement or refund for products not performing as stated on the datasheet
- Valid for 12 months from date of delivery
- Response to your inquiry within 24 hours
  
- We provide support in Chinese, English, French, German, Japanese and Spanish
- Extensive multi-media technical resources to help you
- We investigate all quality concerns to ensure our products perform to the highest standards

If the product does not perform as described on this datasheet, we will offer a refund or replacement. For full details of the Abpromise, please visit <https://www.abcam.cn/abpromise> or contact our technical team.

### **Terms and conditions**

---

- Guarantee only valid for products bought direct from Abcam or one of our authorized distributors