


Anti-VGluT1 antibody ab77822

★★★★★ [2 Abreviews](#) [21 References](#) [1 图像](#)

概述

产品名称	Anti-VGluT1抗体
描述	兔多克隆抗体to VGluT1
宿主	Rabbit
特异性	Due to immunogen homology, the antibody may detect VGluT2 (100%) and VGluT3(95%).
经测试应用	适用于: WB
种属反应性	与反应: Rat 预测可用于: Mouse, Cow, Pigeon, Human, Zebrafish 
免疫原	Synthetic peptide corresponding to Rat VGluT1 aa 150-250 conjugated to keyhole limpet haemocyanin. (Peptide available as ab93078)
常规说明	<p>The Life Science industry has been in the grips of a reproducibility crisis for a number of years. Abcam is leading the way in addressing this with our range of recombinant monoclonal antibodies and knockout edited cell lines for gold-standard validation. Please check that this product meets your needs before purchasing.</p> <p>If you have any questions, special requirements or concerns, please send us an inquiry and/or contact our Support team ahead of purchase. Recommended alternatives for this product can be found below, along with publications, customer reviews and Q&As</p>

性能

形式	Liquid
存放说明	Shipped at 4°C. Store at +4°C short term (1-2 weeks). Upon delivery aliquot. Store at -20°C or -80°C. Avoid freeze / thaw cycle.
存储溶液	pH: 7.40 Preservative: 0.02% Sodium azide Constituent: PBS Batches of this product that have a concentration < 1mg/ml may have BSA added as a stabilising agent. If you would like information about the formulation of a specific lot, please contact our scientific support team who will be happy to help.
纯度	Immunogen affinity purified

克隆 多克隆
同种型 IgG

应用

The Abpromise guarantee **Abpromise™**承诺保证使用ab77822于以下的经测试应用

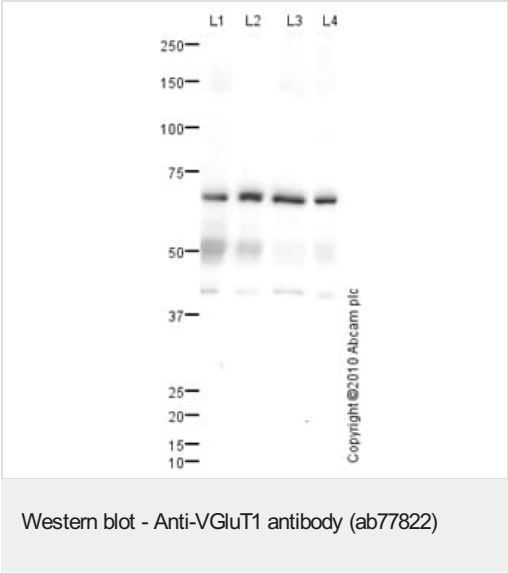
“应用说明”部分 下显示的仅为推荐的起始稀释度;实际最佳的稀释度/浓度应由使用者检定。

应用	Ab评论	说明
WB	★★★★★ (1)	Use a concentration of 1 µg/ml. Detects a band of approximately 67 kDa (predicted molecular weight: 62 kDa).

靶标

功能	Mediates the uptake of glutamate into synaptic vesicles at presynaptic nerve terminals of excitatory neural cells. May also mediate the transport of inorganic phosphate.
组织特异性	Expressed in several regions of the brain including amygdala, cerebellum, cerebral cortex, hippocampus, frontal lobe, medulla, occipital lobe, putamen and temporal lobe.
序列相似性	Belongs to the major facilitator superfamily. Sodium/anion cotransporter family. VGLUT subfamily.
细胞定位	Cytoplasmic vesicle, secretory vesicle, synaptic vesicle membrane. Membrane. Cell junction, synapse, synaptosome.

图片



All lanes : Anti-VGluT1 antibody (ab77822) at 1 µg/ml

- Lane 1 : Rat Brain Tissue Lysate
- Lane 2 : Rat Cerebellum Tissue Lysate
- Lane 3 : Rat Cortex Tissue Lysate
- Lane 4 : Rat Forebrain

Lysates/proteins at 10 µg per lane.

Secondary

All lanes : Goat polyclonal to Rabbit IgG - H&L - Pre-Adsorbed (HRP) at 1/3000 dilution

Developed using the ECL technique.

Performed under reducing conditions.

Predicted band size: 62 kDa

Observed band size: 67 kDa

Additional bands at: 41 kDa, 50 kDa. We are unsure as to the identity of these extra bands.

Exposure time: 3 minutes

Abcam welcomes customer feedback and would appreciate any comments regarding this product and the data presented above.

Please note: All products are "FOR RESEARCH USE ONLY. NOT FOR USE IN DIAGNOSTIC PROCEDURES"

Our Abpromise to you: Quality guaranteed and expert technical support

- Replacement or refund for products not performing as stated on the datasheet
- Valid for 12 months from date of delivery
- Response to your inquiry within 24 hours
- We provide support in Chinese, English, French, German, Japanese and Spanish
- Extensive multi-media technical resources to help you
- We investigate all quality concerns to ensure our products perform to the highest standards

If the product does not perform as described on this datasheet, we will offer a refund or replacement. For full details of the Abpromise, please visit <https://www.abcam.cn/abpromise> or contact our technical team.

Terms and conditions

- Guarantee only valid for products bought direct from Abcam or one of our authorized distributors