

# Anti-VEGFD antibody ab95442

[1 References](#) [1 图像](#)

### 概述

---

产品名称	Anti-VEGFD抗体
描述	兔多克隆抗体to VEGFD
宿主	Rabbit
经测试应用	适用于: WB
种属反应性	与反应: Human
免疫原	Synthetic peptide: VIDEEWQRTQCSPRE , corresponding to internal sequence amino acids 101-115 of Human VEGFD. <a href="#">Run BLAST with</a> <a href="#">Run BLAST with</a>

### 常规说明

The Life Science industry has been in the grips of a reproducibility crisis for a number of years. Abcam is leading the way in addressing this with our range of recombinant monoclonal antibodies and knockout edited cell lines for gold-standard validation. Please check that this product meets your needs before purchasing.

If you have any questions, special requirements or concerns, please send us an inquiry and/or contact our Support team ahead of purchase. Recommended alternatives for this product can be found below, along with publications, customer reviews and Q&As

### 性能

---

形式	Liquid
存放说明	Shipped at 4°C. Upon delivery aliquot and store at -20°C. Avoid repeated freeze / thaw cycles.
存储溶液	Preservatives: 0.025% Thimerosal (merthiolate), 0.025% Sodium azide Constituents: 2.5% BSA, 0.45% Sodium chloride, 0.1% Dibasic monohydrogen sodium phosphate
纯度	Immunogen affinity purified
克隆	多克隆
同种型	IgG

### 应用

---

## The Abpromise guarantee

**Abpromise™** 承诺保证使用ab95442于以下的经测试应用

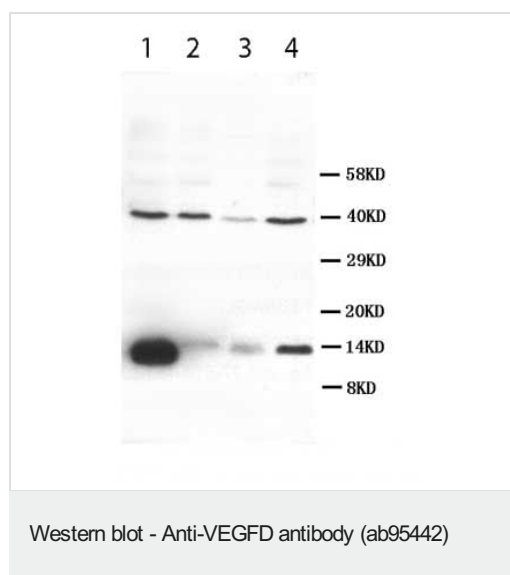
“应用说明”部分 下显示的仅为推荐的起始稀释度;实际最佳的稀释度/浓度应由使用者检定。

应用	Ab评论	说明
WB		Use a concentration of 1 µg/ml. Predicted molecular weight: 40 kDa.

## 靶标

<b>功能</b>	Growth factor active in angiogenesis, lymphangiogenesis and endothelial cell growth, stimulating their proliferation and migration and also has effects on the permeability of blood vessels. May function in the formation of the venous and lymphatic vascular systems during embryogenesis, and also in the maintenance of differentiated lymphatic endothelium in adults. Binds and activates VEGFR-2 (KDR/FLK1) and VEGFR-3 (FLT4) receptors.
<b>组织特异性</b>	Highly expressed in lung, heart, small intestine and fetal lung, and at lower levels in skeletal muscle, colon, and pancreas.
<b>序列相似性</b>	Belongs to the PDGF/VEGF growth factor family.
<b>翻译后修饰</b>	Undergoes a complex proteolytic maturation which generates a variety of processed secreted forms with increased activity toward VEGFR-3 and VEGFR-2. VEGF-D first form an antiparallel homodimer linked by disulfide bonds before secretion. The fully processed VEGF-D is composed mostly of two VEGF homology domains (VHDs) bound by non-covalent interactions.
<b>细胞定位</b>	Secreted.

## 图片



**All lanes :** Anti-VEGFD antibody (ab95442) at 1 µg/ml

**Lane 1 :** SW620 whole cell lysate

**Lane 2 :** Colo320 whole cell lysate

**Lane 3 :** 6T-CEM whole cell lysate

**Lane 4 :** HT1080 whole cell lysate

Lysates/proteins at 100 µg per lane.

**Predicted band size:** 40 kDa

**Please note:** All products are "FOR RESEARCH USE ONLY. NOT FOR USE IN DIAGNOSTIC PROCEDURES"

**Our Abpromise to you: Quality guaranteed and expert technical support**

- Replacement or refund for products not performing as stated on the datasheet
- Valid for 12 months from date of delivery
- Response to your inquiry within 24 hours
  
- We provide support in Chinese, English, French, German, Japanese and Spanish
- Extensive multi-media technical resources to help you
- We investigate all quality concerns to ensure our products perform to the highest standards

If the product does not perform as described on this datasheet, we will offer a refund or replacement. For full details of the Abpromise, please visit <https://www.abcam.cn/abpromise> or contact our technical team.

### **Terms and conditions**

---

- Guarantee only valid for products bought direct from Abcam or one of our authorized distributors