

### Anti-VEGFA antibody ab46154

★★★★★ [29 Abreviews](#) [652 References](#) [3 图像](#)

#### 概述

产品名称	Anti-VEGFA抗体
描述	兔多克隆抗体to VEGFA
宿主	Rabbit
特异性	Replenishment batches of our polyclonal antibody, ab46154 are tested in WB. Previous batches were additionally validated in ELISA. This application is still expected to work and is covered by our Abpromise guarantee. You may also be interested in our alternative recombinant antibody, <a href="#">ab214424</a> .
经测试应用	适用于: WB, ELISA
种属反应性	与反应: Mouse, Human 预测可用于: Rat 
免疫原	Synthetic peptide corresponding to Human VEGFA aa 50-150 conjugated to keyhole limpet haemocyanin. Database link: <a href="#">P15692</a> (Peptide available as <a href="#">ab46160</a> )
阳性对照	ab46154 gave a positive result in the following whole cell lysates: Recombinant Human VEGFA protein Recombinant Mouse VEGFA protein HCT116 whole cell lysate
常规说明	<p>New batches of this antibody are no longer guaranteed in ICC/IF, IHC-P or IHC-Fr as they have not passed our stringent batch testing criteria. Please contact customer support for any specific queries. We recommend <a href="#">ab52917</a> as an alternative for ICC/IF and IHC-P.</p> <p>The Life Science industry has been in the grips of a reproducibility crisis for a number of years. Abcam is leading the way in addressing this with our range of recombinant monoclonal antibodies and knockout edited cell lines for gold-standard validation. Please check that this product meets your needs before purchasing.</p> <p>If you have any questions, special requirements or concerns, please send us an inquiry and/or contact our Support team ahead of purchase. Recommended alternatives for this product can be found below, along with publications, customer reviews and Q&amp;As</p>

#### 性能

形式	Liquid
存放说明	Shipped at 4°C. Store at +4°C short term (1-2 weeks). Upon delivery aliquot. Store at -20°C or -

	80°C. Avoid freeze / thaw cycle.
存储溶液	pH: 7.40 Preservative: 0.02% Sodium azide Constituent: PBS
	Batches of this product that have a concentration < 1mg/ml may have BSA added as a stabilising agent. If you would like information about the formulation of a specific lot, please contact our scientific support team who will be happy to help.
纯度	Immunogen affinity purified
克隆	多克隆
同种型	IgG

应用

The Abpromise guarantee      **Abpromise™**承诺保证使用ab46154于以下的经测试应用

“应用说明”部分 下显示的仅为推荐的起始稀释度;实际最佳的稀释度/浓度应由使用者检定。

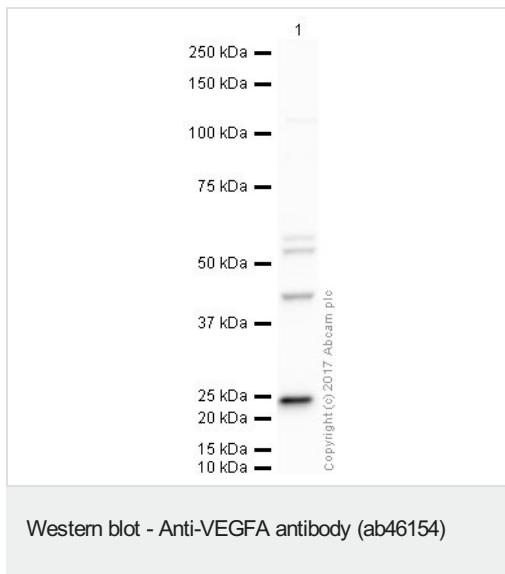
应用	Ab评论	说明
WB	★★★★★ (16)	Use a concentration of 1 µg/ml. Detects a band of approximately 23 kDa (predicted molecular weight: 27 kDa).Can be blocked with <b>Human VEGFA peptide (ab46160)</b> . We recommend <b>Goat Anti-Rabbit IgG H&amp;L (HRP) (ab97051) secondary antibody</b> .
ELISA		Use at an assay dependent concentration.

靶标

功能	Growth factor active in angiogenesis, vasculogenesis and endothelial cell growth. Induces endothelial cell proliferation, promotes cell migration, inhibits apoptosis and induces permeabilization of blood vessels. Binds to the FLT1/VEGFR1 and KDR/VEGFR2 receptors, heparan sulfate and heparin. NRP1/Neuropilin-1 binds isoforms VEGF-165 and VEGF-145. Isoform VEGF165B binds to KDR but does not activate downstream signaling pathways, does not activate angiogenesis and inhibits tumor growth.
组织特异性	Isoform VEGF189, isoform VEGF165 and isoform VEGF121 are widely expressed. Isoform VEGF206 and isoform VEGF145 are not widely expressed.
疾病相关	Defects in VEGFA are a cause of susceptibility to microvascular complications of diabetes type 1 (MVCD1) [MM:603933]. These are pathological conditions that develop in numerous tissues and organs as a consequence of diabetes mellitus. They include diabetic retinopathy, diabetic nephropathy leading to end-stage renal disease, and diabetic neuropathy. Diabetic retinopathy remains the major cause of new-onset blindness among diabetic adults. It is characterized by vascular permeability and increased tissue ischemia and angiogenesis.
序列相似性	Belongs to the PDGF/VEGF growth factor family.
细胞定位	Secreted. VEGF121 is acidic and freely secreted. VEGF165 is more basic, has heparin-binding properties and, although a significant proportion remains cell-associated, most is freely secreted. VEGF189 is very basic, it is cell-associated after secretion and is bound avidly by heparin and

the extracellular matrix, although it may be released as a soluble form by heparin, heparinase or plasmin.

## 图片



Anti-VEGFA antibody (ab46154) at 1 µg/ml + HCT116 whole cell lysate at 20 µg

### Secondary

Rabbit IgG secondary antibody at 1/10000 dilution

Developed using the ECL technique.

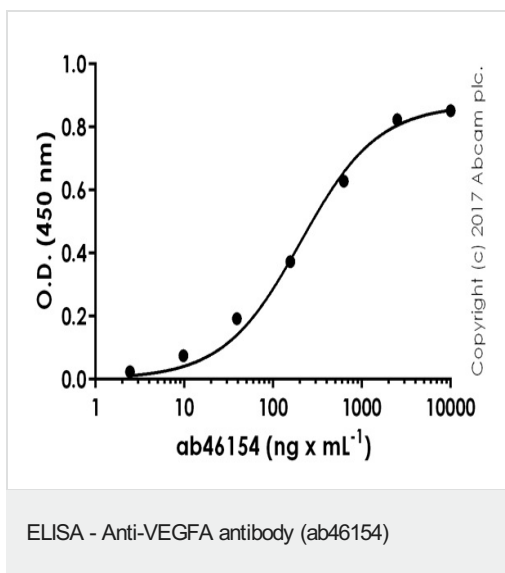
Performed under reducing conditions.

**Predicted band size:** 27 kDa

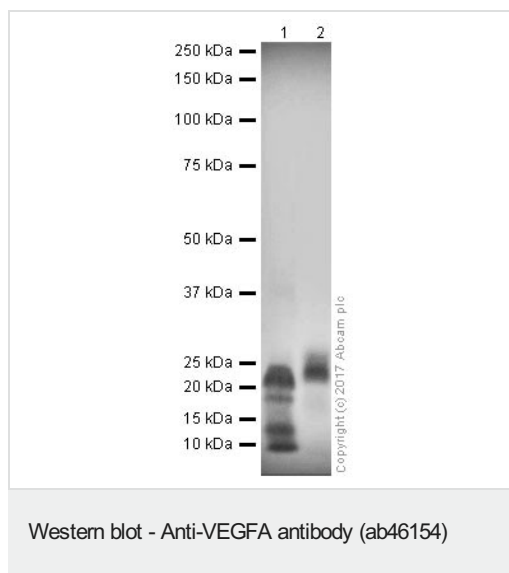
**Observed band size:** 23 kDa

**Exposure time:** 2 minutes

This blot was produced using a 10% Bis-tris gel under the MES buffer system. The gel was run at 200V for 35 minutes before being transferred onto a Nitrocellulose membrane at 30V for 70 minutes. The membrane was then blocked for an hour using 5% Bovine Serum Albumin before being incubated with ab46154 overnight at 4°C. Antibody binding was detected using an anti-rabbit antibody conjugated to HRP, and visualised using ECL development solution.



Ab46154 was tested using indirect ELISA. The wells were coated with peptide (1 µg x mL<sup>-1</sup> at 100 µL per well) overnight at 4°C, followed by a 1% fat-free milk blocking step for 1 hour at room temperature. The primary antibody (ab46154) was added at a range of dilutions (50 µL per well) for 1 hour at room temperature. Ab97080 (Goat Anti-Rabbit IgG H&L-HRP) was used as a secondary antibody at 1:50.000 dilution for 1 hour at room temperature and signal was developed with TMB substrate.



**All lanes :** Anti-VEGFA antibody (ab46154) at 1 µg/ml

**Lane 1 :** Recombinant Human VEGFA protein (His tag)  
(**ab204773**)

**Lane 2 :** Recombinant mouse VEGFA protein (Active) (**ab185265**)

Lysates/proteins at 0.1 µg per lane.

### Secondary

**All lanes :** Rabbit IgG secondary antibody at 1/10000 dilution

Developed using the ECL technique.

Performed under reducing conditions.

**Predicted band size:** 27 kDa

**Observed band size:** 23 kDa

**Exposure time:** 10 seconds

This blot was produced using a 10% Bis-tris gel under the MES buffer system. The gel was run at 200V for 35 minutes before being transferred onto a Nitrocellulose membrane at 30V for 70 minutes. The membrane was then blocked for an hour using 3% Milk before being incubated with ab46154 overnight at 4°C. Antibody binding was detected using an anti-rabbit antibody conjugated to HRP, and visualised using ECL development solution.

**Please note:** All products are "FOR RESEARCH USE ONLY. NOT FOR USE IN DIAGNOSTIC PROCEDURES"

### Our Abpromise to you: Quality guaranteed and expert technical support

- Replacement or refund for products not performing as stated on the datasheet
- Valid for 12 months from date of delivery
- Response to your inquiry within 24 hours
- We provide support in Chinese, English, French, German, Japanese and Spanish
- Extensive multi-media technical resources to help you
- We investigate all quality concerns to ensure our products perform to the highest standards

If the product does not perform as described on this datasheet, we will offer a refund or replacement. For full details of the Abpromise, please visit <https://www.abcam.cn/abpromise> or contact our technical team.

## Terms and conditions

---

- Guarantee only valid for products bought direct from Abcam or one of our authorized distributors