

Anti-VEGF Receptor 3 antibody [RM0003-5F63] ab51874

[4 References](#) [1 图像](#)

概述

产品名称	Anti-VEGF Receptor 3抗体[RM0003-5F63]
描述	大鼠单克隆抗体[RM0003-5F63] to VEGF Receptor 3
宿主	Rat
特异性	No cross reactivity to mouse VEGFR1 and VEGFR2.
经测试应用	适用于: IHC-P
种属反应性	与反应: Mouse
免疫原	Recombinant full length protein corresponding to Mouse VEGF Receptor 3 (extracellular). Database link: P35917
常规说明	<p>The Life Science industry has been in the grips of a reproducibility crisis for a number of years. Abcam is leading the way in addressing this with our range of recombinant monoclonal antibodies and knockout edited cell lines for gold-standard validation. Please check that this product meets your needs before purchasing.</p> <p>If you have any questions, special requirements or concerns, please send us an inquiry and/or contact our Support team ahead of purchase. Recommended alternatives for this product can be found below, along with publications, customer reviews and Q&As</p>

性能

形式	Liquid
存放说明	Shipped at 4°C. Upon delivery aliquot and store at -20°C or -80°C. Avoid repeated freeze / thaw cycles.
存储溶液	Constituent: PBS
纯度	Protein G purified
克隆	单克隆
克隆编号	RM0003-5F63
同种型	IgG2

应用

The Abpromise guarantee

[Abpromise™](#) 承诺保证使用ab51874于以下的经测试应用

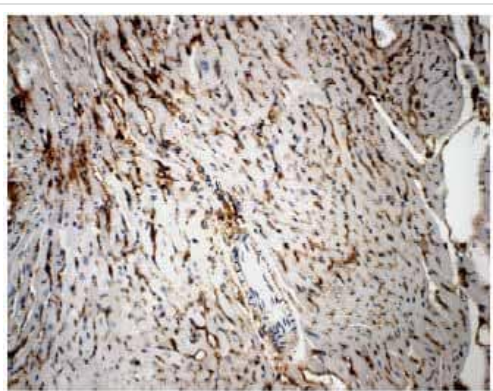
“应用说明”部分 下显示的仅为推荐的起始稀释度;实际最佳的稀释度/浓度应由使用者检定。

应用	Ab评论	说明
IHC-P		Use at an assay dependent concentration. Use at 1/100-1/500 dilution

靶标

功能	Receptor for VEGFC. Has a tyrosine-protein kinase activity.
组织特异性	Placenta, lung, heart, and kidney, does not seem to be expressed in pancreas and brain.
疾病相关	Defects in FLT4 are the cause of lymphedema hereditary type 1A (LMPH1A) [MIM:153100]; also known as Nonne-Milroy lymphedema or Milroy disease. Hereditary lymphedema is a chronic disabling condition which results in swelling of the extremities due to altered lymphatic flow. Patients with lymphedema suffer from recurrent local infections and physical impairment. Note=Defects in FLT4 are found in juvenile hemangioma. Juvenile hemangiomas are the most common tumors of infancy, occurring as many as 10% of all births. These benign vascular lesions enlarge rapidly during the first year of life by hyperplasia of endothelial cells and attendant pericytes, and then spontaneously involute over a period of years, leaving loose fibrofatty tissue.
序列相似性	Belongs to the protein kinase superfamily. Tyr protein kinase family. CSF-1/PDGF receptor subfamily. Contains 7 Ig-like C2-type (immunoglobulin-like) domains. Contains 1 protein kinase domain.
细胞定位	Membrane.

图片



ab51874 at 1/500 dilution, staining VEGF Receptor 3 in mouse heart tissue section by Immunohistochemistry (paraffin-embedded sections).

Immunohistochemistry paraffin embedded sections -
Anti-VEGF Receptor 3 antibody [RM0003-5F63]
(ab51874)

Please note: All products are "FOR RESEARCH USE ONLY. NOT FOR USE IN DIAGNOSTIC PROCEDURES"

Our Abpromise to you: Quality guaranteed and expert technical support

- Replacement or refund for products not performing as stated on the datasheet
- Valid for 12 months from date of delivery
- Response to your inquiry within 24 hours

- We provide support in Chinese, English, French, German, Japanese and Spanish
- Extensive multi-media technical resources to help you
- We investigate all quality concerns to ensure our products perform to the highest standards

If the product does not perform as described on this datasheet, we will offer a refund or replacement. For full details of the Abpromise, please visit <https://www.abcam.cn/abpromise> or contact our technical team.

Terms and conditions

- Guarantee only valid for products bought direct from Abcam or one of our authorized distributors