

### Anti-VEGF Receptor 3 antibody ab27278

★★★★★ [8 Abreviews](#) [44 References](#) [4 图像](#)

#### 概述

产品名称	Anti-VEGF Receptor 3抗体
描述	兔多克隆抗体to VEGF Receptor 3
宿主	Rabbit
经测试应用	适用于: ICC/IF, WB, IHC-P, IHC - Wholemount
种属反应性	与反应: Mouse, Rat, Human
免疫原	Synthetic peptide within Human VEGF Receptor 3 aa 1250-1350. The exact sequence is proprietary. Database link: <a href="#">P35916</a>
阳性对照	IHC-P: Human placenta tissue. ICC/IF: HeLa cells. WB: Hey cell lysate.
常规说明	<b>This product is FOR RESEARCH USE ONLY. For commercial use, please contact <a href="mailto:partnerships@abcam.com">partnerships@abcam.com</a>.</b>  The Life Science industry has been in the grips of a reproducibility crisis for a number of years. Abcam is leading the way in addressing this with our range of recombinant monoclonal antibodies and knockout edited cell lines for gold-standard validation. Please check that this product meets your needs before purchasing.  If you have any questions, special requirements or concerns, please send us an inquiry and/or contact our Support team ahead of purchase. Recommended alternatives for this product can be found below, along with publications, customer reviews and Q&As

#### 性能

形式	Liquid
存放说明	Shipped at 4°C. Upon delivery aliquot and store at -20°C. Avoid freeze / thaw cycles.
存储溶液	pH: 7.60 Preservative: 0.1% Sodium azide Constituents: PBS, 1% BSA
纯度	Immunogen affinity purified
克隆	多克隆
同种型	IgG

## 应用

### The Abpromise guarantee

**Abpromise™**承诺保证使用ab27278于以下的经测试应用

“应用说明”部分 下显示的仅为推荐的起始稀释度;实际最佳的稀释度/浓度应由使用者检定。

应用	Ab评论	说明
ICC/IF		Use a concentration of 1 µg/ml.
WB	★★★★★ (1)	Use at an assay dependent concentration. Predicted molecular weight: 146 kDa.
IHC-P	★★★★★ (5)	1/100. Perform heat mediated antigen retrieval before commencing with IHC staining protocol.
IHC - Wholemount	★★★★★ (1)	Use at an assay dependent concentration.

## 靶标

### 功能

Receptor for VEGFC. Has a tyrosine-protein kinase activity.

### 组织特异性

Placenta, lung, heart, and kidney, does not seem to be expressed in pancreas and brain.

### 疾病相关

Defects in FLT4 are the cause of lymphedema hereditary type 1A (LMPH1A) [MIM:153100]; also known as Nonne-Milroy lymphedema or Milroy disease. Hereditary lymphedema is a chronic disabling condition which results in swelling of the extremities due to altered lymphatic flow. Patients with lymphedema suffer from recurrent local infections and physical impairment. Note=Defects in FLT4 are found in juvenile hemangioma. Juvenile hemangiomas are the most common tumors of infancy, occurring as many as 10% of all births. These benign vascular lesions enlarge rapidly during the first year of life by hyperplasia of endothelial cells and attendant pericytes, and then spontaneously involute over a period of years, leaving loose fibrofatty tissue.

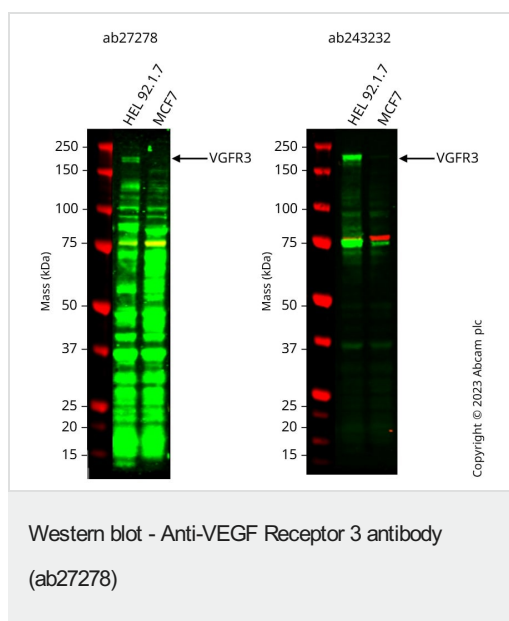
### 序列相似性

Belongs to the protein kinase superfamily. Tyr protein kinase family. CSF-1/PDGF receptor subfamily.  
Contains 7 Ig-like C2-type (immunoglobulin-like) domains.  
Contains 1 protein kinase domain.

### 细胞定位

Membrane.

## 图片



**All lanes :** Anti-VEGF Receptor 3 antibody (ab27278) at 1/1000 dilution

**Lane 1 :** HEL 92.1.7 cell lysate

**Lane 2 :** MCF7 cell lysate

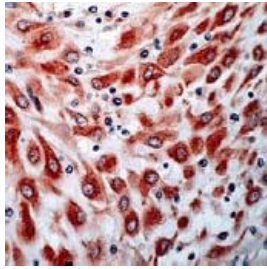
Lysates/proteins at 20 µg per lane.

Performed under reducing conditions.

**Predicted band size:** 146 kDa

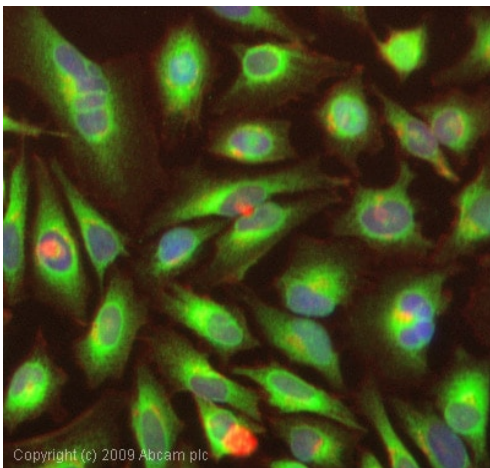
**Observed band size:** 200 kDa

Anti-FLT4 antibody (ab27278) staining at 1/1000 dilution, shown in green; Mouse anti-CANX [CANX/1543] ([ab238078](#)) loading control staining at 1/20000 dilution, shown in red. In Western blot, ab27278 was shown to bind specifically to FLT4 but with several non-specific bands. We recommend [ab243232](#) for Western blot. First, samples were run on an SDS-PAGE gel then transferred onto a nitrocellulose membrane. Membranes were blocked in 3 % milk in TBS-0.1 % Tween® 20 (TBS-T) before incubation with primary antibodies overnight at 4 °C. Blots were washed four times in TBS-T, incubated with secondary antibodies for 1 h at room temperature, washed again four times then imaged. Secondary antibodies used were Goat anti-Rabbit IgG H&L 800CW and Goat anti-Mouse IgG H&L 680RD at 1/20000 dilution.



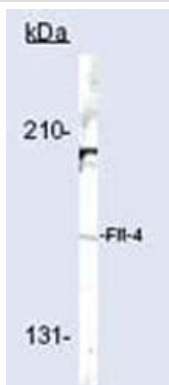
Immunohistochemistry (Formalin/PFA-fixed paraffin-embedded sections) - Anti-VEGF Receptor 3 antibody (ab27278)

Ab27278 at a dilution of 1/100, staining formalin fixed paraffin embedded Flt4 in human placenta by Immunohistochemistry.



Immunocytochemistry/ Immunofluorescence - Anti-VEGF Receptor 3 antibody (ab27278)

ICC/IF image of ab27278 stained HeLa cells. The cells were 4% PFA fixed (10 min) and then incubated in 1%BSA / 10% normal goat serum / 0.3M glycine in 0.1% PBS-Tween for 1h to permeabilise the cells and block non-specific protein-protein interactions. The cells were then incubated with the antibody (ab27278, 1µg/ml) overnight at +4°C. The secondary antibody (green) was Alexa Fluor® 488 goat anti-rabbit IgG (H+L) used at a 1/1000 dilution for 1h. Alexa Fluor® 594 WGA was used to label plasma membranes (red) at a 1/200 dilution for 1h. DAPI was used to stain the cell nuclei (blue) at a concentration of 1.43µM.



Western blot - Anti-VEGF Receptor 3 antibody (ab27278)

Anti-VEGF Receptor 3 antibody (ab27278) at 1/50 dilution

**Predicted band size:** 146 kDa

**Observed band size:** 170,200 kDa

Hey cell lysate (50µg/lane) was used. The antibody was diluted at 1:50 for 2 hours at room temperature. Hey cell lysate (50µg/lane) was used. The antibody was diluted at 1:50 for 2 hours at room temperature. The protein is heavily glycosylated and this might explain the increase in MW above the predicted MW as well as the multiple bands.

**Please note:** All products are "FOR RESEARCH USE ONLY. NOT FOR USE IN DIAGNOSTIC PROCEDURES"

### **Our Abpromise to you: Quality guaranteed and expert technical support**

---

- Replacement or refund for products not performing as stated on the datasheet
- Valid for 12 months from date of delivery
- Response to your inquiry within 24 hours
  
- We provide support in Chinese, English, French, German, Japanese and Spanish
- Extensive multi-media technical resources to help you
- We investigate all quality concerns to ensure our products perform to the highest standards

If the product does not perform as described on this datasheet, we will offer a refund or replacement. For full details of the Abpromise, please visit <https://www.abcam.cn/abpromise> or contact our technical team.

### **Terms and conditions**

---

- Guarantee only valid for products bought direct from Abcam or one of our authorized distributors