

Anti-VDAC1/Porin antibody [16G9E6BC4] - Mitochondrial Loading Control ab110326

★ ★ ★ ★ ★ **2 Abreviews** **41 References** **1 图像**

概述

产品名称	Anti-VDAC1/Porin抗体[16G9E6BC4] - Mitochondrial Loading Control
描述	小鼠单克隆抗体[16G9E6BC4] to VDAC1/Porin - Mitochondrial Loading Control
宿主	Mouse
经测试应用	适用于: WB
种属反应性	与反应: <i>Saccharomyces cerevisiae</i>
免疫原	Full length native protein (purified). This information is proprietary to Abcam and/or its suppliers.
常规说明	<p>This antibody clone is manufactured by Abcam. If you require a custom buffer formulation or conjugation for your experiments, please contact orders@abcam.com.</p> <p>The Life Science industry has been in the grips of a reproducibility crisis for a number of years. Abcam is leading the way in addressing this with our range of recombinant monoclonal antibodies and knockout edited cell lines for gold-standard validation. Please check that this product meets your needs before purchasing.</p> <p>If you have any questions, special requirements or concerns, please send us an inquiry and/or contact our Support team ahead of purchase. Recommended alternatives for this product can be found below, along with publications, customer reviews and Q&As</p> <p>Product was previously marketed under the MitoSciences sub-brand.</p>

性能

形式	Liquid
存放说明	Shipped at 4°C. Store at +4°C. Do Not Freeze.
存储溶液	<p>pH: 7.5</p> <p>Preservative: 0.02% Sodium azide</p> <p>Constituent: HEPES buffered saline</p>
纯度	IgG fraction
纯化说明	ab110326 was produced in vitro using hybridomas grown in serum-free medium, and then purified by biochemical fractionation.
克隆	单克隆

克隆编号	16G9E6BC4
同种型	IgG1
轻链类型	kappa

应用

The Abpromise guarantee

Abpromise™承诺保证使用ab110326于以下的经测试应用

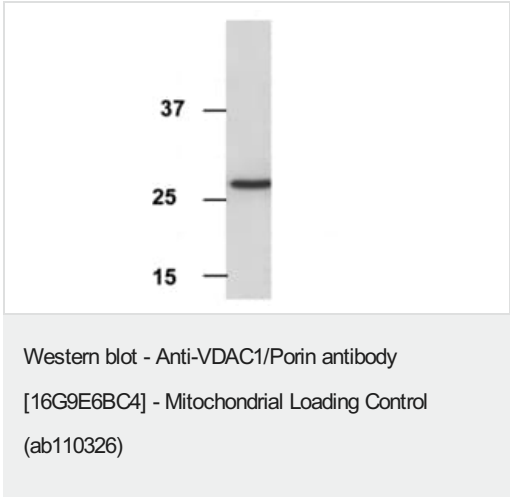
“应用说明”部分 下显示的仅为推荐的起始稀释度;实际最佳的稀释度/浓度应由使用者检定。

应用	Ab评论	说明
WB	★☆☆☆☆ (1)	Use a concentration of 1 µg/ml. Predicted molecular weight: 30 kDa.

靶标

功能	Forms a channel through the mitochondrial outer membrane and also the plasma membrane. The channel at the outer mitochondrial membrane allows diffusion of small hydrophilic molecules; in the plasma membrane it is involved in cell volume regulation and apoptosis. It adopts an open conformation at low or zero membrane potential and a closed conformation at potentials above 30-40 mV. The open state has a weak anion selectivity whereas the closed state is cation-selective. May participate in the formation of the permeability transition pore complex (PTPC) responsible for the release of mitochondrial products that triggers apoptosis.
组织特异性	Heart, liver and skeletal muscle.
序列相似性	Belongs to the eukaryotic mitochondrial porin family.
结构域	Consists mainly of a membrane-spanning beta-barrel formed by 19 beta-strands. The helical N-terminus folds back into the pore opening and plays a role in voltage-gated channel activity.
细胞定位	Mitochondrion outer membrane. Cell membrane.

图片



Anti-VDAC1/Porin antibody [16G9E6BC4] - Mitochondrial Loading Control (ab110326) at 1 µg/ml + Yeast spheroplast membrane fraction.

Predicted band size: 30 kDa

Please note: All products are "FOR RESEARCH USE ONLY. NOT FOR USE IN DIAGNOSTIC PROCEDURES"

Our Abpromise to you: Quality guaranteed and expert technical support

- Replacement or refund for products not performing as stated on the datasheet
- Valid for 12 months from date of delivery
- Response to your inquiry within 24 hours

- We provide support in Chinese, English, French, German, Japanese and Spanish
- Extensive multi-media technical resources to help you
- We investigate all quality concerns to ensure our products perform to the highest standards

If the product does not perform as described on this datasheet, we will offer a refund or replacement. For full details of the Abpromise, please visit <https://www.abcam.cn/abpromise> or contact our technical team.

Terms and conditions

- Guarantee only valid for products bought direct from Abcam or one of our authorized distributors