


Anti-Vasopressin antibody ab68669

★★★★☆ [3 Abreviews](#) [4 References](#) [2 图像](#)

概述

产品名称	Anti-Vasopressin抗体
描述	兔多克隆抗体to Vasopressin
宿主	Rabbit
经测试应用	适用于: IHC-P, ELISA 不适用于: WB
种属反应性	与反应: Human 预测可用于: Mouse, Rat, Sheep, Cow, Cat, Dog, Pig 
免疫原	Synthetic peptide corresponding to Human Vasopressin aa 1-100 conjugated to keyhole limpet haemocyanin. (Peptide available as ab68668)
常规说明	<p>The Life Science industry has been in the grips of a reproducibility crisis for a number of years. Abcam is leading the way in addressing this with our range of recombinant monoclonal antibodies and knockout edited cell lines for gold-standard validation. Please check that this product meets your needs before purchasing.</p> <p>If you have any questions, special requirements or concerns, please send us an inquiry and/or contact our Support team ahead of purchase. Recommended alternatives for this product can be found below, along with publications, customer reviews and Q&As</p>

性能

形式	Liquid
存放说明	Shipped at 4°C. Store at +4°C short term (1-2 weeks). Upon delivery aliquot. Store at -20°C or -80°C. Avoid freeze / thaw cycle.
存储溶液	pH: 7.40 Preservative: 0.02% Sodium azide Constituent: PBS
纯度	Batches of this product that have a concentration < 1mg/ml may have BSA added as a stabilising agent. If you would like information about the formulation of a specific lot, please contact our scientific support team who will be happy to help. Immunogen affinity purified

克隆 多克隆
同种型 IgG

应用

The Abpromise guarantee **Abpromise™** 承诺保证使用ab68669于以下的经测试应用

“应用说明”部分 下显示的仅为推荐的起始稀释度;实际最佳的稀释度/浓度应由使用者检定。

应用	Ab评论	说明
IHC-P		Use a concentration of 1 - 5 µg/ml. Perform heat mediated antigen retrieval before commencing with IHC staining protocol.
ELISA		Use a concentration of 0.002 µg/ml.

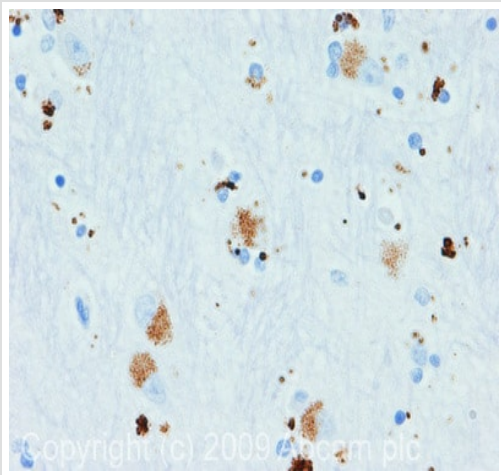
应用说明 Is unsuitable for WB.

靶标

相关性 Vasopressin, also known as arginine vasopressin (AVP) or antidiuretic hormone (ADH), is a posterior pituitary hormone that is synthesised in the hypothalamus. Vasopressin is synthesised as a precursor protein that consists of arginine vasopressin and two associated proteins, neurophysin 2 and the glycopeptide copeptin. Vasopressin, together with its carrier protein neurophysin II, is packaged into neurosecretory vesicles and transported axonally to the nerve endings in the neurohypophysis, where it is either stored or secreted into the bloodstream. Vasopressin acts as a growth factor by enhancing pH regulation through acid-base transport systems. It has a direct antidiuretic action on the kidney and also causes vasoconstriction of the peripheral vessels. Vasopressin can also contract smooth muscle during parturition and lactation. It also plays a role in cognition, tolerance, adaptation and complex sexual and maternal behaviour, as well as in the regulation of water excretion and cardiovascular functions. Mutations in the vasopressin precursor cause autosomal dominant neurohypophyseal diabetes insipidus (ADNDI), which is characterised by persistent thirst, polydipsia and polyuria.

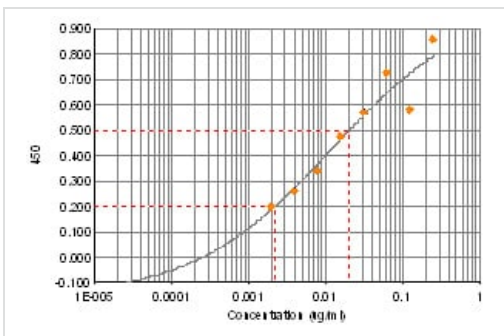
细胞定位 Secreted

图片



IHC image of Vasopressin staining in human Hippocampus FFPE section, performed on a Bond™ system using the standard protocol F. The section was pre-treated using heat mediated antigen retrieval with sodium citrate buffer (pH6, epitope retrieval solution 1) for 20 mins. The section was then incubated with ab68669 1µg/ml, for 15 mins at room temperature and detected using an HRP conjugated compact polymer system. DAB was used as the chromogen. The section was then counterstained with haematoxylin and mounted with DPX

Immunohistochemistry (Formalin/PFA-fixed paraffin-embedded sections) - Anti-Vasopressin antibody (ab68669)



ELISA using ab68669 at varying antibody concentrations. The black line indicates binding to the vasopressin peptide ab68668.

ELISA - Anti-Vasopressin antibody (ab68669)

Please note: All products are "FOR RESEARCH USE ONLY. NOT FOR USE IN DIAGNOSTIC PROCEDURES"

Our Abpromise to you: Quality guaranteed and expert technical support

- Replacement or refund for products not performing as stated on the datasheet
- Valid for 12 months from date of delivery
- Response to your inquiry within 24 hours

- We provide support in Chinese, English, French, German, Japanese and Spanish
- Extensive multi-media technical resources to help you
- We investigate all quality concerns to ensure our products perform to the highest standards

If the product does not perform as described on this datasheet, we will offer a refund or replacement. For full details of the Abpromise, please visit <https://www.abcam.cn/abpromise> or contact our technical team.

Terms and conditions

- Guarantee only valid for products bought direct from Abcam or one of our authorized distributors