


Anti-USP38 antibody ab72244

★★★★☆ [2 Abreviews](#) [2 References](#) [2 图像](#)

概述

产品名称	Anti-USP38抗体
描述	兔多克隆抗体to USP38
宿主	Rabbit
经测试应用	适用于: WB, IP
种属反应性	与反应: Human 预测可用于: Rabbit, Cow, Pig, Rhesus monkey, Gorilla 
免疫原	Synthetic peptide corresponding to a region between residues 700 and 750 of human USP38 (NP_115946.2)
阳性对照	Whole cell lysate from Hela and 293T cells.
常规说明	<p>The Life Science industry has been in the grips of a reproducibility crisis for a number of years. Abcam is leading the way in addressing this with our range of recombinant monoclonal antibodies and knockout edited cell lines for gold-standard validation. Please check that this product meets your needs before purchasing.</p> <p>If you have any questions, special requirements or concerns, please send us an inquiry and/or contact our Support team ahead of purchase. Recommended alternatives for this product can be found below, along with publications, customer reviews and Q&As</p>

性能

形式	Liquid
存放说明	Shipped at 4°C. Upon delivery aliquot and store at -20°C. Avoid freeze / thaw cycles.
存储溶液	pH: 7 Preservative: 0.09% Sodium azide Constituents: 1.815% Tris, 1.764% Sodium citrate, 0.021% PBS
纯度	Immunogen affinity purified
克隆	多克隆
同种型	IgG

应用

The Abpromise guarantee

Abpromise™ 承诺保证使用 ab72244 于以下的经测试应用

“应用说明”部分 下显示的仅为推荐的起始稀释度;实际最佳的稀释度/浓度应由使用者检定。

应用	Ab评论	说明
WB	★★★★☆ (2)	
IP		

应用说明

IP: Use at 2-5µg/mg of lysate.
WB: 1/2,000 - 1/10,000. Detects bands of approximately 31, 68, and 117 kDa (predicted molecular weight: 117 kDa).

Not yet tested in other applications.
Optimal dilutions/concentrations should be determined by the end user.

靶标

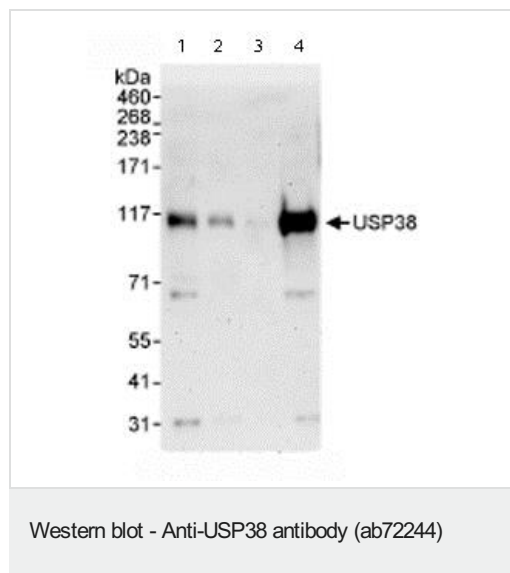
组织特异性

Highly expressed in skeletal muscle. Expressed in adrenal gland.

序列相似性

Belongs to the peptidase C19 family.

图片



All lanes : Anti-USP38 antibody (ab72244) at 0.1 µg/ml

Lane 1 : Whole cell lysate from HeLa cells at 50 µg

Lane 2 : Whole cell lysate from HeLa cells at 15 µg

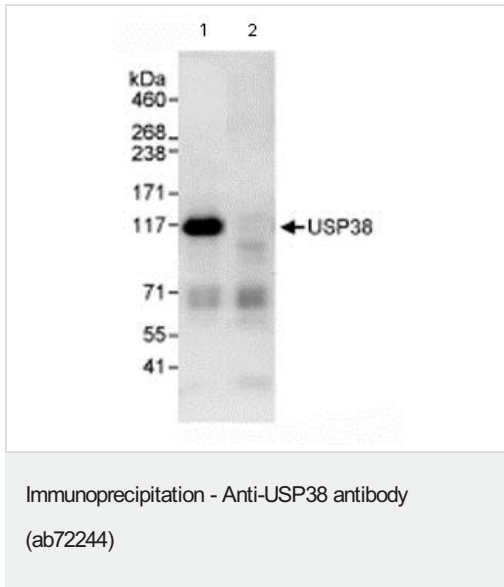
Lane 3 : Whole cell lysate from HeLa cells at 5 µg

Lane 4 : Whole cell lysate from 293T cells at 50 µg

Predicted band size: 117 kDa

Observed band size: 117 kDa

Additional bands at: 31 kDa, 68 kDa. We are unsure as to the identity of these extra bands.



Immunoprecipitation/ Western Blot of USP38.

Lane 1: ab72244 at 3µg/mg whole cell lysate.

Lane 2: Control IgG.

ab72244 at 1µg/ml for WB.

Whole cell lysate from Hela cells at 1mg for IP, 20% of IP loaded.

Detection: Chemiluminescence with an exposure time of 30 seconds.

Please note: All products are "FOR RESEARCH USE ONLY. NOT FOR USE IN DIAGNOSTIC PROCEDURES"

Our Abpromise to you: Quality guaranteed and expert technical support

- Replacement or refund for products not performing as stated on the datasheet
- Valid for 12 months from date of delivery
- Response to your inquiry within 24 hours
- We provide support in Chinese, English, French, German, Japanese and Spanish
- Extensive multi-media technical resources to help you
- We investigate all quality concerns to ensure our products perform to the highest standards

If the product does not perform as described on this datasheet, we will offer a refund or replacement. For full details of the Abpromise, please visit <https://www.abcam.cn/abpromise> or contact our technical team.

Terms and conditions

- Guarantee only valid for products bought direct from Abcam or one of our authorized distributors