


### Anti-UQCRC2 antibody [13G12AF12BB11] ab14745

★★★★★ **11 Abreviews** **264 References** **5 图像**

#### 概述

产品名称	Anti-UQCRC2抗体[13G12AF12BB11]
描述	小鼠单克隆抗体[13G12AF12BB11] to UQCRC2
宿主	Mouse
经测试应用	适用于: Flow Cyt, IHC-P, WB
种属反应性	与反应: Human 预测可用于: Pig 
免疫原	Tissue, cells or virus corresponding to Cow UQCRC2.
阳性对照	Human, bovine, murine and rat heart mitochondria. HepG2 cell lysate.
常规说明	<p>This antibody clone is manufactured by Abcam. If you require a custom buffer formulation or conjugation for your experiments, please contact <a href="mailto:orders@abcam.com">orders@abcam.com</a>.</p> <p>The Life Science industry has been in the grips of a reproducibility crisis for a number of years. Abcam is leading the way in addressing this with our range of recombinant monoclonal antibodies and knockout edited cell lines for gold-standard validation. Please check that this product meets your needs before purchasing.</p> <p>If you have any questions, special requirements or concerns, please send us an inquiry and/or contact our Support team ahead of purchase. Recommended alternatives for this product can be found below, along with publications, customer reviews and Q&amp;As</p>

#### 性能

形式	Liquid
存放说明	Shipped at 4°C. Store at +4°C. Do Not Freeze.
存储溶液	pH: 7.4 Preservative: 0.02% Sodium azide Constituent: HEPES buffered saline
纯度	IgG fraction
克隆	单克隆
克隆编号	13G12AF12BB11
同种型	IgG1

轻链类型

kappa

应用

The Abpromise guarantee

**Abpromise™**承诺保证使用ab14745于以下的经测试应用

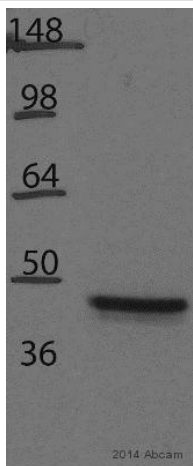
“应用说明”部分 下显示的仅为推荐的起始稀释度;实际最佳的稀释度/浓度应由使用者检定。

应用	Ab评论	说明
Flow Cyt		Use 1µg for 10 <sup>6</sup> cells. <b>ab170190</b> - Mouse monoclonal IgG1, is suitable for use as an isotype control with this antibody.
IF		Use a concentration of 0.1 - 0.5 µg/ml. Requires heat-induced antigen retrieval where aldehydes are used as fixatives.
IHC-P		Use a concentration of 1 µg/ml. Perform heat mediated antigen retrieval with citrate buffer pH 6 before commencing with IHC staining protocol.
WB	★★★★★ (9)	Use a concentration of 1 µg/ml. Detects a band of approximately 49.5 kDa.

靶标

功能	This is a component of the ubiquinol-cytochrome c reductase complex (complex III or cytochrome b-c1 complex), which is part of the mitochondrial respiratory chain. The core protein 2 is required for the assembly of the complex.
序列相似性	Belongs to the peptidase M16 family. UQCRC2/QCR2 subfamily.
细胞定位	Mitochondrion inner membrane.

图片



Western blot - Anti-UQCRC2 antibody  
[13G12AF12BB11] (ab14745)

This image is courtesy of an anonymous Abreview

Anti-UQCRC2 antibody [13G12AF12BB11] (ab14745) at 1/1000 dilution + H23 whole cell lysate at 20 µg

### Secondary

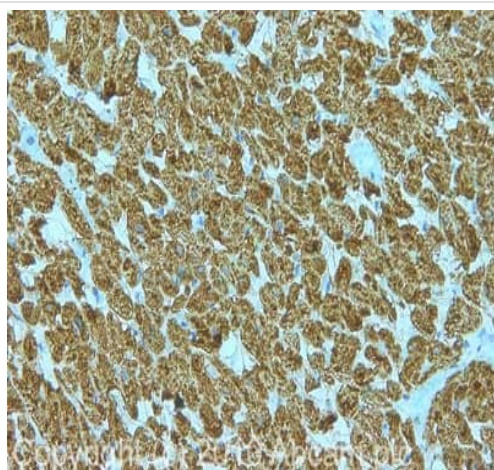
HRP-conjugated goat anti-mouse IgG polyclonal at 1/2000 dilution

Developed using the ECL technique.

Performed under reducing conditions.

**Observed band size:** 48 kDa

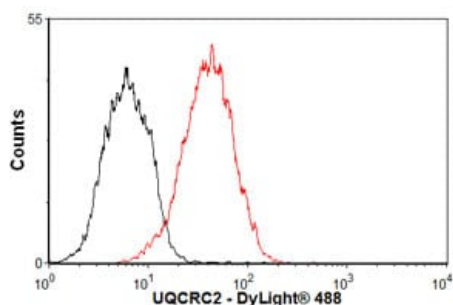
**Exposure time:** 1 minute



Immunohistochemistry (Formalin/PFA-fixed paraffin-embedded sections) - Anti-UQCRC2 antibody  
[13G12AF12BB11] (ab14745)

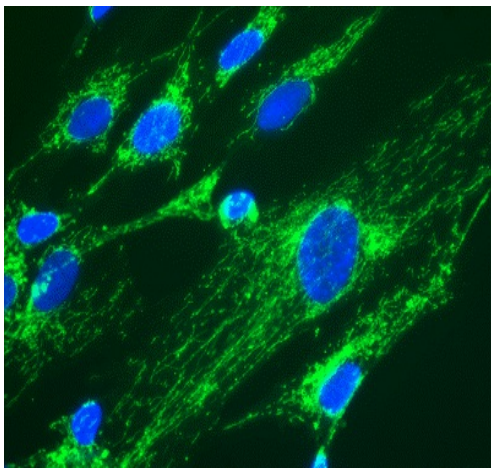
IHC image of ab14745 staining in human heart formalin fixed paraffin embedded tissue section, performed on a Leica Bond<sup>TM</sup> system using the standard protocol F. The section was pre-treated using heat mediated antigen retrieval with sodium citrate buffer (pH6, epitope retrieval solution 1) for 20 mins. The section was then incubated with ab14745, 1 µg/ml, for 15 mins at room temperature and detected using an HRP conjugated compact polymer system. DAB was used as the chromogen. The section was then counterstained with haematoxylin and mounted with DPX.

For other IHC staining systems (automated and non-automated) customers should optimize variable parameters such as antigen retrieval conditions, primary antibody concentration and antibody incubation times.



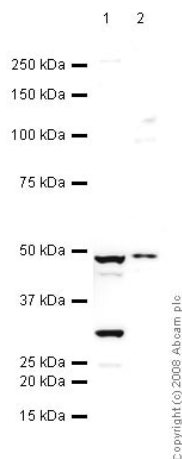
Flow Cytometry - Anti-UQCRC2 antibody  
[13G12AF12BB11] (ab14745)

Overlay histogram showing HepG2 cells stained with ab14745 (red line). The cells were fixed with 80% methanol (5 min) and then permeabilized with 0.1% PBS-Tween for 20 min. The cells were then incubated in 1x PBS / 10% normal goat serum / 0.3M glycine to block non-specific protein-protein interactions followed by the antibody (ab14745, 1 µg/1x10<sup>6</sup> cells) for 30 min at 22°C. The secondary antibody used was DyLight® 488 goat anti-mouse IgG (H+L) (**ab96879**) at 1/500 dilution for 30 min at 22°C. Isotype control antibody (black line) was mouse IgG1 [ICIGG1] (**ab91353**, 2 µg/1x10<sup>6</sup> cells) used under the same conditions. Acquisition of >5,000 events was performed.



Immunofluorescence - Anti-UQCRC2 antibody  
[13G12AF12BB11] (ab14745)

Mitochondrial localization of complex III visualized by immunofluorescence using anti-complex III subunit Core 2 mAb 2E3GC12FB2AE2 (ab14745). Cultured human embryonic lung-derived fibroblasts (strain MRC5) were fixed, permeabilized and then labeled with ab14745 (0.5 µg/ml) followed by an AlexaFluor® 488-conjugated-goat-anti-mouse IgG1 isotype specific secondary antibody (2 µg/ml).



Western blot - Anti-UQCRC2 antibody  
[13G12AF12BB11] (ab14745)

**All lanes :** Anti-UQCRC2 antibody [13G12AF12BB11] (ab14745) at 0.5 µg/ml

**Lane 1 :** Human skeletal muscle tissue lysate

**Lane 2 :** Ramos (human Burkitt's lymphoma cell line) whole cell lysate

Lysates/proteins at 10 µg per lane.

#### Secondary

**All lanes :** Goat polyclonal to mouse IgG - H&L - pre-adsorbed (HRP) at 1/3000 dilution

**Observed band size:** 48 kDa

**Additional bands at:** 30 kDa. We are unsure as to the identity of these extra bands.

**Please note:** All products are "FOR RESEARCH USE ONLY. NOT FOR USE IN DIAGNOSTIC PROCEDURES"

#### Our Abpromise to you: Quality guaranteed and expert technical support

- Replacement or refund for products not performing as stated on the datasheet
- Valid for 12 months from date of delivery
- Response to your inquiry within 24 hours
- We provide support in Chinese, English, French, German, Japanese and Spanish
- Extensive multi-media technical resources to help you
- We investigate all quality concerns to ensure our products perform to the highest standards

If the product does not perform as described on this datasheet, we will offer a refund or replacement. For full details of the Abpromise, please visit <https://www.abcam.cn/abpromise> or contact our technical team.

## Terms and conditions

---

- Guarantee only valid for products bought direct from Abcam or one of our authorized distributors