

Anti-UFM1 antibody [EPR4264(2)] ab109305

重组 RabMAb

★★★★★ **4 Abreviews** **29 References** **9 图像**

概述

产品名称	Anti-UFM1抗体[EPR4264(2)]
描述	兔单克隆抗体[EPR4264(2)] to UFM1
宿主	Rabbit
经测试应用	适用于: WB, IP, IHC-P 不适用于: Flow Cyt or ICC/IF
种属反应性	与反应: Mouse, Rat, Human
免疫原	Synthetic peptide. This information is proprietary to Abcam and/or its suppliers.
阳性对照	Fetal kidney, 293T, SH-SY5Y, and HepG2 whole cell lysate (ab7900); Human brain tissue
常规说明	This product is a recombinant monoclonal antibody, which offers several advantages including: <ul style="list-style-type: none"> - High batch-to-batch consistency and reproducibility - Improved sensitivity and specificity - Long-term security of supply - Animal-free production For more information see here . Our RabMAb [®] technology is a patented hybridoma-based technology for making rabbit monoclonal antibodies. For details on our patents, please refer to RabMAb[®] patents .

性能

形式	Liquid
存放说明	Shipped at 4°C. Store at -20°C. Stable for 12 months at -20°C.
存储溶液	pH: 7.20 Preservative: 0.01% Sodium azide Constituents: 40% Glycerol (glycerin, glycerine), 59% PBS, 0.05% BSA
纯度	Protein A purified
克隆	单克隆
克隆编号	EPR4264(2)
同种型	IgG

应用

The Abpromise guarantee

Abpromise™ 承诺保证使用ab109305于以下的经测试应用

“应用说明”部分 下显示的仅为推荐的起始稀释度;实际最佳的稀释度/浓度应由使用者检定。

应用	Ab评论	说明
WB	★★★★★ (3)	1/1000 - 1/2000. Predicted molecular weight: 9 kDa.
IP		1/10 - 1/40.
IHC-P		1/250 - 1/1000. Perform heat mediated antigen retrieval with citrate buffer pH 6 before commencing with IHC staining protocol.

应用说明

Is unsuitable for Flow Cyt or ICC/IF.

靶标

功能

Ubiquitin-like modifier protein which binds to a number of target proteins, such as DDRGK1.

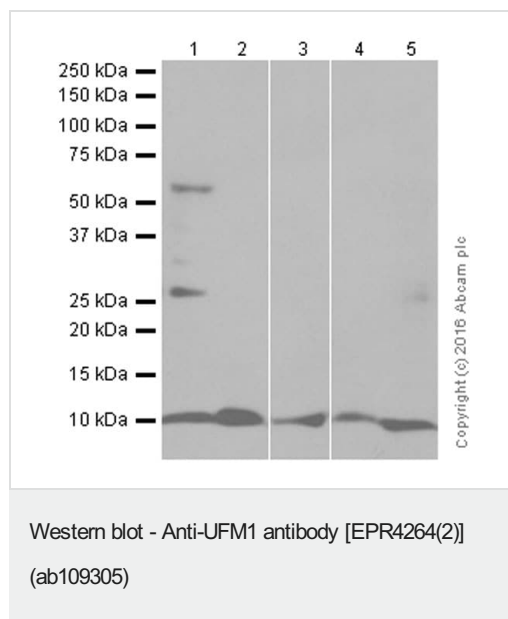
序列相似性

Belongs to the UFM1 family.

细胞定位

Nucleus. Cytoplasm. Predominantly nuclear. Also expressed diffusely in the cytoplasm.

图片



All lanes : Anti-UFM1 antibody [EPR4264(2)] (ab109305) at 1/2000 dilution

Lane 1 : SH-SY5Y (Human neuroblastoma epithelial cell) whole cell lysate

Lane 2 : HepG2 (Human hepatocellular carcinoma epithelial cell)
whole cell lysate

Lane 3 : Mouse spleen cell lysate

Lane 4 : Mouse heart cell lysate

Lane 5 : Rat spleen cell lysate

Lysates/proteins at 20 μ g per lane.

Secondary

All lanes : Goat Anti-Rabbit IgG H&L (HRP) (**ab97051**) at 1/20000 dilution

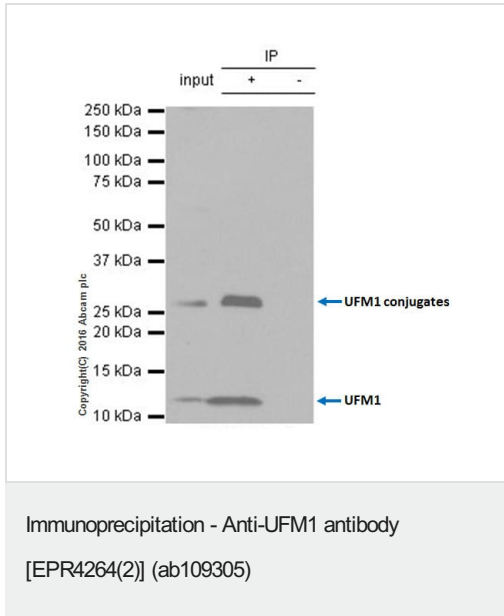
Performed under reducing conditions.

Predicted band size: 9 kDa

Observed band size: 28,9 kDa

Mouse heart cell lysate Blocking and diluting buffer: 5%
NFDM/TBST

The band at around 28kDa might be UFM1 conjugates [PMID:
23152784].

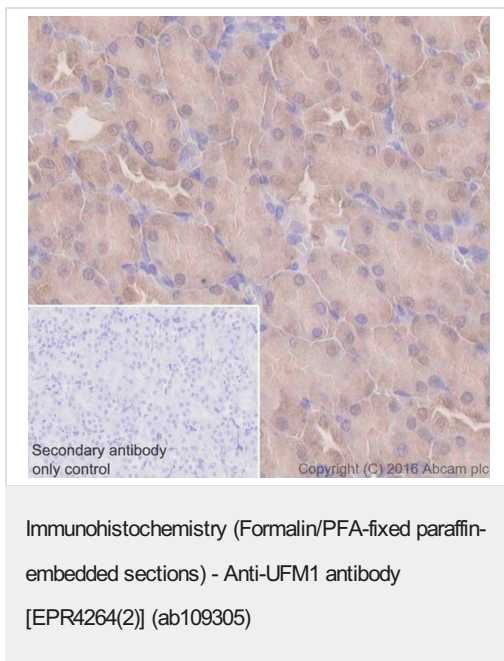


ab109305 immunoprecipitating UFM1. 10µg of cell lysate was
incubated with primary antibody at a dilution of 1/20 and VeriBlot for
IP Detection Reagent (HRP) ([ab131366](#)) at a dilution of 1/1000.

Lane 1: 293 (Human embryonic kidney epithelial cell) whole cell
lysate 10ug

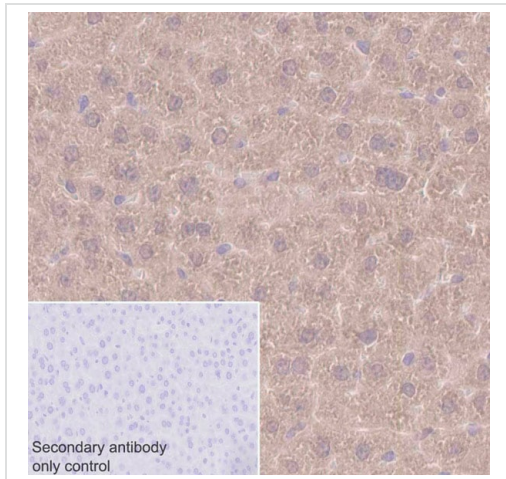
Lane 2: 293 (Human embryonic kidney epithelial cell) whole cell
lysate

Lane 3: Rabbit monoclonal IgG ([ab172730](#)) instead of ab109305
in 293 (Human embryonic kidney epithelial cell) whole cell lysate



ab109305 staining UFM1 in rat kidney tissue sections by
Immunohistochemistry (IHC-P - paraformaldehyde-fixed, paraffin-
embedded sections). Tissue was fixed with paraformaldehyde and
antigen retrieval was by heat mediation in a EDTA buffer. Samples
were incubated with primary antibody at a dilution of 1/1000. A goat
anti-rabbit IgG H&L (HRP) ([ab97051](#)) was used as the secondary
antibody at a dilution of 1/500.

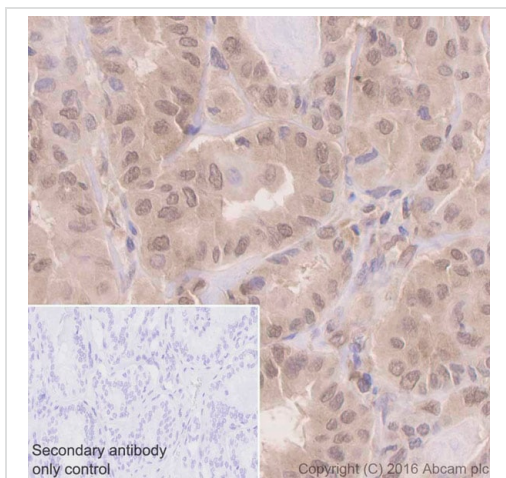
Negative control 1: PBS in place of primary antibody.



Immunohistochemistry (Formalin/PFA-fixed paraffin-embedded sections) - Anti-UFM1 antibody
[EPR4264(2)] (ab109305)

ab109305 staining UFM1 in mouse liver tissue sections by Immunohistochemistry (IHC-P - paraformaldehyde-fixed, paraffin-embedded sections). Tissue was fixed with paraformaldehyde and antigen retrieval was by heat mediation in a EDTA buffer. Samples were incubated with primary antibody at a dilution of 1/100. A goat anti-rabbit IgG H&L (HRP) **ab97051** was used as the secondary antibody at a dilution of 1/500.

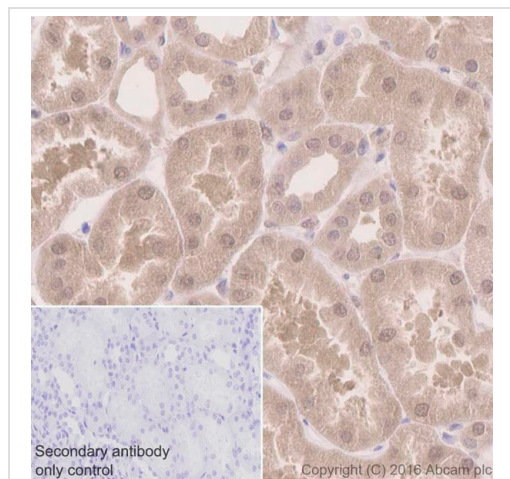
Negative control 1: PBS in place of primary antibody.



Immunohistochemistry (Formalin/PFA-fixed paraffin-embedded sections) - Anti-UFM1 antibody
[EPR4264(2)] (ab109305)

ab109305 staining UFM1 in human thyroid carcinoma tissue sections by Immunohistochemistry (IHC-P - paraformaldehyde-fixed, paraffin-embedded sections). Tissue was fixed with paraformaldehyde and antigen retrieval was by heat mediation in a EDTA buffer. Samples were incubated with primary antibody at a dilution of 1/100. A goat anti-rabbit IgG H&L (HRP) **ab97051** was used as the secondary antibody at a dilution of 1/500.

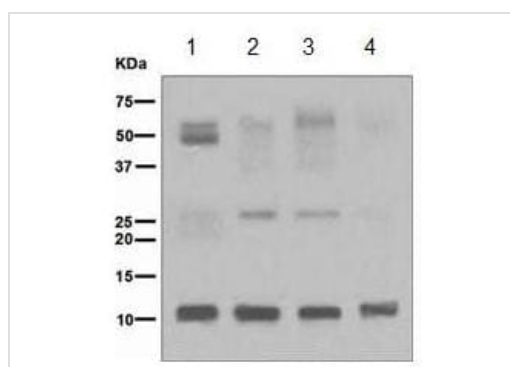
Negative control 1: PBS in place of primary antibody.



Immunohistochemistry (Formalin/PFA-fixed paraffin-embedded sections) - Anti-UFM1 antibody [EPR4264(2)] (ab109305)

ab109305 staining UFM1 in human kidney tissue sections by Immunohistochemistry (IHC-P - paraformaldehyde-fixed, paraffin-embedded sections). Tissue was fixed with paraformaldehyde and antigen retrieval was by heat mediation in a EDTA buffer. Samples were incubated with primary antibody at a dilution of 1/1000. A goat anti-rabbit IgG H&L (HRP) **ab97051** was used as the secondary antibody at a dilution of 1/500.

Negative control 1: PBS in place of primary antibody.



Western blot - Anti-UFM1 antibody [EPR4264(2)] (ab109305)

All lanes : Anti-UFM1 antibody [EPR4264(2)] (ab109305) at 1/1000 dilution

Lane 1 : Fetal kidney lysate

Lane 2 : 293T cell lysate

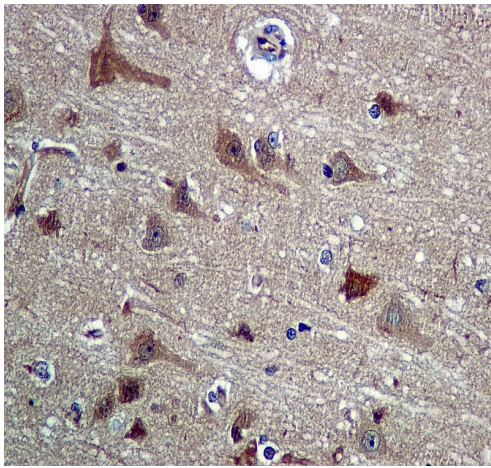
Lane 3 : SH-SY5Y cell lysate

Lane 4 : HepG2 cell lysate

Lysates/proteins at 10 µg per lane.

Predicted band size: 9 kDa

Observed band size: 9 kDa



Immunohistochemistry (Formalin/PFA-fixed paraffin-embedded sections) - Anti-UFM1 antibody [EPR4264(2)] (ab109305)

Immunohistochemical analysis of paraffin-embedded Human brain tissue using ab109305 at 1/250 dilution.

Perform heat mediated antigen retrieval with citrate buffer pH 6 before commencing with IHC staining protocol.

Why choose a recombinant antibody?



Anti-UFM1 antibody [EPR4264(2)] (ab109305)

Please note: All products are "FOR RESEARCH USE ONLY. NOT FOR USE IN DIAGNOSTIC PROCEDURES"

Our Abpromise to you: Quality guaranteed and expert technical support

- Replacement or refund for products not performing as stated on the datasheet
- Valid for 12 months from date of delivery

- Response to your inquiry within 24 hours
- We provide support in Chinese, English, French, German, Japanese and Spanish
- Extensive multi-media technical resources to help you
- We investigate all quality concerns to ensure our products perform to the highest standards

If the product does not perform as described on this datasheet, we will offer a refund or replacement. For full details of the Abpromise, please visit <https://www.abcam.cn/abpromise> or contact our technical team.

Terms and conditions

- Guarantee only valid for products bought direct from Abcam or one of our authorized distributors