


# Anti-UBE2M/UBC12 antibody [EPR5333] ab109507

**重组** RabMAb

**10 References** [6 图像](#)

### 概述

产品名称	Anti-UBE2M/UBC12抗体[EPR5333]
描述	兔单克隆抗体[EPR5333] to UBE2M/UBC12
宿主	Rabbit
经测试应用	<b>适用于:</b> Flow Cyt (Intra), WB, IHC-P, ICC/IF
种属反应性	<b>与反应:</b> Human <b>预测可用于:</b> Mouse, Rat 
免疫原	Synthetic peptide. This information is proprietary to Abcam and/or its suppliers.
阳性对照	WB: HEK-293T and Ramos cell lysates. IHC-P: Human colonic adenocarcinoma and lung carcinoma tissues. ICC/IF: Ramos cells.
常规说明	<p>This product is a recombinant monoclonal antibody, which offers several advantages including:</p> <ul style="list-style-type: none"> <li>- High batch-to-batch consistency and reproducibility</li> <li>- Improved sensitivity and specificity</li> <li>- Long-term security of supply</li> <li>- Animal-free production</li> </ul> <p>For more information <a href="#">see here</a>.</p> <p>Our RabMAb<sup>®</sup> technology is a patented hybridoma-based technology for making rabbit monoclonal antibodies. For details on our patents, please refer to <a href="#">RabMAb<sup>®</sup> patents</a>.</p>

### 性能

形式	Liquid
存放说明	Shipped at 4°C. Store at -20°C. Stable for 12 months at -20°C.
存储溶液	pH: 7.20 Preservative: 0.05% Sodium azide Constituents: 0.1% BSA, 40% Glycerol (glycerin, glycerine), 9.85% Tris glycine, 50% Tissue culture supernatant
纯度	Protein A purified
克隆	单克隆
克隆编号	EPR5333

同种型

IgG

应用

The Abpromise guarantee

Abpromise™承诺保证使用ab109507于以下的经测试应用

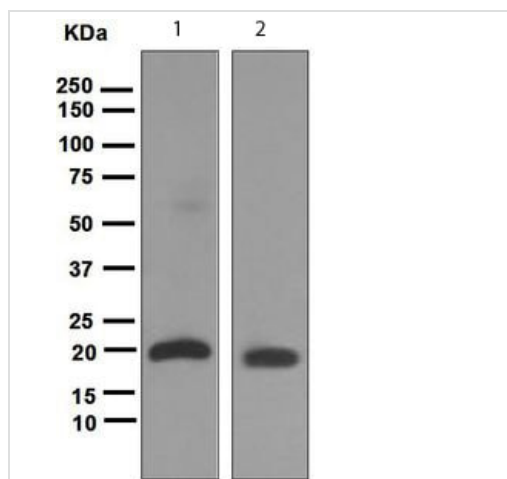
“应用说明”部分 下显示的仅为推荐的起始稀释度;实际最佳的稀释度/浓度应由使用者检定。

应用	Ab评论	说明
Flow Cyt (Intra)		1/100 - 1/1000. <b>ab172730</b> - Rabbit monoclonal IgG, is suitable for use as an isotype control with this antibody.
WB		1/10000 - 1/50000. Detects a band of approximately 20 kDa (predicted molecular weight: 21 kDa).
IHC-P		1/100 - 1/250. Perform heat mediated antigen retrieval with citrate buffer pH 6 before commencing with IHC staining protocol.
ICC/IF		1/250.

靶标

功能	Accepts the ubiquitin-like protein NEDD8 from the UBA3-NAE1 E1 complex and catalyzes its covalent attachment to other proteins. The specific interaction with the E3 ubiquitin ligase RBX1, but not RBX2, suggests that the RBX1-UBE2M complex neddylates specific target proteins, such as CUL1, CUL2, CUL3 and CUL4. Involved in cell proliferation.
通路	Protein modification; protein neddylation.
序列相似性	Belongs to the ubiquitin-conjugating enzyme family. UBC12 subfamily.
结构域	Both the N-terminal docking peptide and the catalytic core domain must bind the UBA3-NAE1 complex simultaneously for optimal transfer of NEDD8.

图片



Western blot - Anti-UBE2M/UBC12 antibody  
[EPR5333] (ab109507)

**All lanes :** Anti-UBE2M/UBC12 antibody [EPR5333] (ab109507)  
at 1/10000 dilution

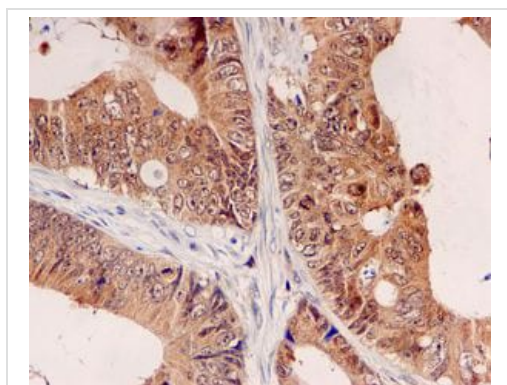
**Lane 1 :** HEK-293T cell lysate

**Lane 2 :** Ramos cell lysate

Lysates/proteins at 10 µg per lane.

**Predicted band size:** 21 kDa

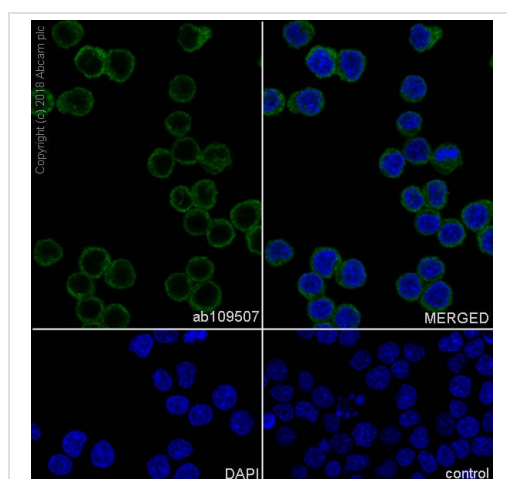
**Observed band size:** 20 kDa



Immunohistochemistry (Formalin/PFA-fixed paraffin-embedded sections) - Anti-UBE2M/UBC12 antibody  
[EPR5333] (ab109507)

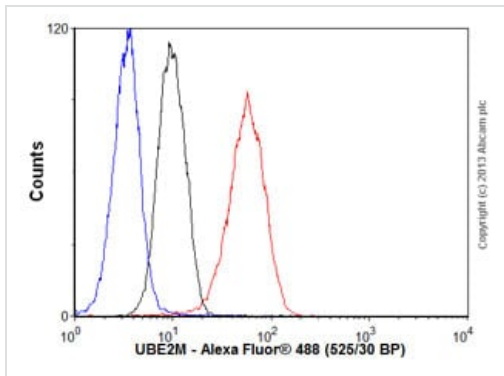
Immunohistochemical analysis of paraffin-embedded human colonic adenocarcinoma tissue using ab109507 at a dilution of 1/100.

Perform heat mediated antigen retrieval with citrate buffer pH 6 before commencing with IHC staining protocol.



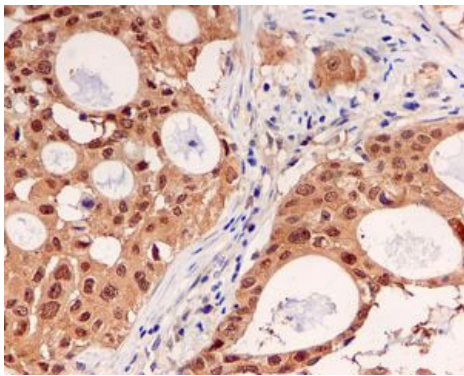
Immunocytochemistry/ Immunofluorescence - Anti-UBE2M/UBC12 antibody [EPR5333] (ab109507)

Immunocytochemistry/ Immunofluorescence analysis of Ramos (human Burkitt's lymphoma B lymphocyte) cells labeling UBE2M/UBC12 with purified ab109507 at 1/250 dilution (8 µg/mL). Cells were fixed in 4% Paraformaldehyde and permeabilized with 0.1% tritonX-100. Goat anti rabbit IgG (Alexa Fluor® 488, **ab150077**) was used as the secondary antibody at 1/1000 (2 µg/mL) dilution. DAPI (blue) was used as nuclear counterstain.



Flow Cytometry (Intracellular) - Anti-UBE2M/UBC12 antibody [EPR5333] (ab109507)

Overlay histogram showing Ramos cells stained with ab109507 (red line). The cells were fixed with 4% paraformaldehyde (10 min) and then permeabilized with 0.1% PBS-Tween for 20 min. The cells were then incubated in 1x PBS / 10% normal goat serum / 0.3M glycine to block non-specific protein-protein interactions followed by the antibody (ab109507, 1/1000 dilution) for 30 min at 22°C. The secondary antibody used was Alexa Fluor® 488 goat anti-rabbit IgG (H&L) ([ab150077](#)) at 1/2000 dilution for 30 min at 22°C. Isotype control antibody (black line) was rabbit IgG (monoclonal) (0.1µg/1x10<sup>6</sup> cells) used under the same conditions. Unlabelled sample (blue line) was also used as a control. Acquisition of >5,000 events were collected using a 20mW Argon ion laser (488nm) and 525/30 bandpass filter. This antibody gave a positive signal in Ramos cells fixed with 80% methanol (5 min)/permeabilized with 0.1% PBS-Tween for 20 min used under the same conditions.



Immunohistochemistry (Formalin/PFA-fixed paraffin-embedded sections) - Anti-UBE2M/UBC12 antibody [EPR5333] (ab109507)

Immunohistochemical analysis of paraffin-embedded Human lung carcinoma tissue using ab109507 at a dilution of 1/100.

Perform heat mediated antigen retrieval with citrate buffer pH 6 before commencing with IHC staining protocol.

### Why choose a recombinant antibody?



**Research with confidence**  
Consistent and reproducible results



**Long-term and scalable supply**  
Recombinant technology



**Success from the first experiment**  
Confirmed specificity



**Ethical standards compliant**  
Animal-free production

Anti-UBE2M/UBC12 antibody [EPR5333]  
(ab109507)

**Please note:** All products are "FOR RESEARCH USE ONLY. NOT FOR USE IN DIAGNOSTIC PROCEDURES"

### Our Abpromise to you: Quality guaranteed and expert technical support

---

- Replacement or refund for products not performing as stated on the datasheet
- Valid for 12 months from date of delivery
- Response to your inquiry within 24 hours
- We provide support in Chinese, English, French, German, Japanese and Spanish
- Extensive multi-media technical resources to help you
- We investigate all quality concerns to ensure our products perform to the highest standards

If the product does not perform as described on this datasheet, we will offer a refund or replacement. For full details of the Abpromise, please visit <https://www.abcam.cn/abpromise> or contact our technical team.

### Terms and conditions

---

- Guarantee only valid for products bought direct from Abcam or one of our authorized distributors