




Anti-UBE2I / UBC9 antibody ab21193

★★★★★ [2 Abreviews](#) [18 References](#) [3 图像](#)

概述

产品名称	Anti-UBE2I / UBC9抗体
描述	山羊多克隆抗体to UBE2I / UBC9
宿主	Goat
经测试应用	适用于: IHC-P, WB
种属反应性	与反应: Rat, Human 预测可用于: Chicken, Hamster, Dog, Xenopus laevis 
免疫原	Synthetic peptide: SGIALSRLAQERK , corresponding to N terminal amino acids 2-14 of Human Ube2I.  Run BLAST with  Run BLAST with
常规说明	Product is very sensitive to freeze/thawing therefore this should be avoided. Store at 4C for short term use and -20C for long term storage in small aliquots. The Life Science industry has been in the grips of a reproducibility crisis for a number of years. Abcam is leading the way in addressing this with our range of recombinant monoclonal antibodies and knockout edited cell lines for gold-standard validation. Please check that this product meets your needs before purchasing. If you have any questions, special requirements or concerns, please send us an inquiry and/or contact our Support team ahead of purchase. Recommended alternatives for this product can be found below, along with publications, customer reviews and Q&As

性能

形式	Liquid
存放说明	Shipped at 4°C. Upon delivery aliquot and store at -20°C or -80°C. Avoid repeated freeze / thaw cycles.
存储溶液	pH: 7.30 Preservative: 0.02% Sodium azide Constituents: Tris buffered saline, 0.5% BSA
纯度	Immunogen affinity purified
克隆	多克隆
同种型	IgG

应用

The Abpromise guarantee **Abpromise™**承诺保证使用ab21193于以下的经测试应用

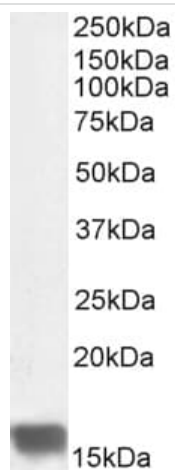
“应用说明”部分 下显示的仅为推荐的起始稀释度;实际最佳的稀释度/浓度应由使用者检定。

应用	Ab评论	说明
IHC-P		Use at an assay dependent concentration.
WB	★★★★★ (1)	Use a concentration of 0.1 - 0.3 µg/ml. Detects a band of approximately 17 kDa (predicted molecular weight: 18 kDa). A 1 hour primary incubation is recommended for this product. Transfer onto PVDF membrane and block in 3 % milk. Incubate primary antibody with membrane at room temperature.

靶标

功能	Accepts the ubiquitin-like proteins SUMO1, SUMO2, SUMO3 and SUMO4 from the UBLE1A-UBLE1B E1 complex and catalyzes their covalent attachment to other proteins with the help of an E3 ligase such as RANBP2 or CBX4. Necessary for sumoylation of FOXL2 and KAT5. Essential for nuclear architecture and chromosome segregation.
组织特异性	Expressed in heart, skeletal muscle, pancreas, kidney, liver, lung, placenta and brain. Also expressed in testis and thymus.
通路	Protein modification; protein sumoylation.
序列相似性	Belongs to the ubiquitin-conjugating enzyme family.
细胞定位	Nucleus. Cytoplasm. Mainly nuclear. In spermatocytes, localizes in synaptonemal complexes. Recruited by BCL11A into the nuclear body.

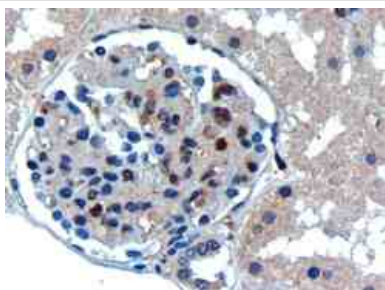
图片



Western blot - Anti-UBE2I / UBC9 antibody
(ab21193)

Anti-UBE2I / UBC9 antibody (ab21193) at 0.3 µg/ml + Rat ovary
lysate at 35 µg

Predicted band size: 18 kDa



Immunohistochemistry (Formalin/PFA-fixed paraffin-
embedded sections) - Anti-UBE2I / UBC9 antibody
(ab21193)

Ab21193 (0.3ug/ml) staining human UBE2I in human kidney by
immunohistochemistry using paraffin embedded tissue.

Microwaved antigen retrieval with Tris/EDTA buffer pH9, HRP-
staining.



Western blot - Anti-UBE2I / UBC9 antibody
(ab21193)

Anti-UBE2I / UBC9 antibody (ab21193) at 0.1 µg/ml + Human
kidney lysate at 35 µg

Predicted band size: 18 kDa

Please note: All products are "FOR RESEARCH USE ONLY. NOT FOR USE IN DIAGNOSTIC PROCEDURES"

Our Abpromise to you: Quality guaranteed and expert technical support

- Replacement or refund for products not performing as stated on the datasheet
- Valid for 12 months from date of delivery
- Response to your inquiry within 24 hours

- We provide support in Chinese, English, French, German, Japanese and Spanish
- Extensive multi-media technical resources to help you
- We investigate all quality concerns to ensure our products perform to the highest standards

If the product does not perform as described on this datasheet, we will offer a refund or replacement. For full details of the Abpromise, please visit <https://www.abcam.cn/abpromise> or contact our technical team.

Terms and conditions

- Guarantee only valid for products bought direct from Abcam or one of our authorized distributors