


Anti-UBE2E3 antibody ab66257

1 图像

概述

产品名称	Anti-UBE2E3抗体
描述	小鼠多克隆抗体to UBE2E3
宿主	Mouse
经测试应用	适用于: WB
种属反应性	与反应: Recombinant fragment 预测可用于: Mouse, Rat, Horse, Chicken, Cow, Dog, Pig, Xenopus laevis, Zebrafish, Cynomolgus monkey, Rhesus monkey, Opossum 
免疫原	Recombinant fragment with tag: RIQKELAEIT LDPPPNC SAG PKGDNIYEW R STILGPPGSV YEGGVFFLDI TFSSDYPFKP PKVTFRTRY HCNINSQGV I CLDILKDN, corresponding to amino acids 65-153 of Human UBE2E3 Run BLAST with ExpASY Run BLAST with NCBI
阳性对照	Partial recombinant UBE2E3 with tag.
常规说明	<p>The Life Science industry has been in the grips of a reproducibility crisis for a number of years. Abcam is leading the way in addressing this with our range of recombinant monoclonal antibodies and knockout edited cell lines for gold-standard validation. Please check that this product meets your needs before purchasing.</p> <p>If you have any questions, special requirements or concerns, please send us an inquiry and/or contact our Support team ahead of purchase. Recommended alternatives for this product can be found below, along with publications, customer reviews and Q&As</p>

性能

形式	Liquid
存放说明	Shipped at 4°C. Upon delivery aliquot and store at -20°C. Avoid freeze / thaw cycles.
存储溶液	Constituents: Whole serum, 50% Glycerol
纯度	Whole antiserum
克隆	多克隆
同种型	IgG

应用

The Abpromise guarantee

Abpromise™ 承诺保证使用 ab66257 于以下的经测试应用

“应用说明”部分下显示的仅为推荐的起始稀释度；实际最佳的稀释度/浓度应由使用者检定。

应用	Ab评论	说明
WB		

应用说明

ELISA: Use at an assay dependent dilution.

WB: 1/1000 - 1/2500. Predicted molecular weight: 23 kDa.

This antibody has only been tested in WB against the recombinant fragment used as immunogen. We have no data on the detection of endogenous protein.

Not yet tested in other applications.

Optimal dilutions/concentrations should be determined by the end user.

靶标

功能

Accepts ubiquitin from the E1 complex and catalyzes its covalent attachment to other proteins. In vitro catalyzes 'Lys-11'- and 'Lys-48'-, as well as 'Lys-63'-linked polyubiquitination. Participates in the regulation of transepithelial sodium transport in renal cells. May be involved in cell growth arrest.

组织特异性

Ubiquitously expressed at low levels. Highly expressed in skeletal muscle.

通路

Protein modification; protein ubiquitination.

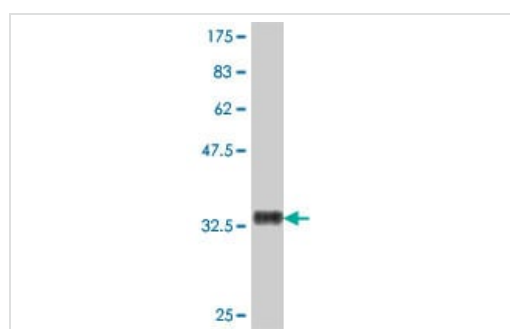
序列相似性

Belongs to the ubiquitin-conjugating enzyme family.

细胞定位

Nucleus. Cytoplasm. Shuttles between the nucleus and cytoplasm in a IPO11-dependent manner.

图片



Western blot - Anti-UBE2E3 antibody (ab66257)

Western blot against tagged recombinant protein immunogen using ab66257 UBE2E3 antibody at 1/1000 dilution. Predicted band size of immunogen is 36 kDa.

Please note: All products are "FOR RESEARCH USE ONLY. NOT FOR USE IN DIAGNOSTIC PROCEDURES"

Our Abpromise to you: Quality guaranteed and expert technical support

- Replacement or refund for products not performing as stated on the datasheet
- Valid for 12 months from date of delivery
- Response to your inquiry within 24 hours

- We provide support in Chinese, English, French, German, Japanese and Spanish
- Extensive multi-media technical resources to help you
- We investigate all quality concerns to ensure our products perform to the highest standards

If the product does not perform as described on this datasheet, we will offer a refund or replacement. For full details of the Abpromise, please visit <https://www.abcam.cn/abpromise> or contact our technical team.

Terms and conditions

- Guarantee only valid for products bought direct from Abcam or one of our authorized distributors