

Anti-UBE2C antibody ab3935

[3 References](#) [2 图像](#)

概述

产品名称	Anti-UBE2C抗体
描述	山羊多克隆抗体to UBE2C
宿主	Goat
经测试应用	适用于: WB, IP
种属反应性	与反应: Human
免疫原	Synthetic peptide: QETYSKQVTSQEP, corresponding to C terminal amino acids 167-179 of Human UBE2C.

 [Run BLAST with](#) [Expasy](#)  [Run BLAST with](#) [NCBI](#)

常规说明

The Life Science industry has been in the grips of a reproducibility crisis for a number of years. Abcam is leading the way in addressing this with our range of recombinant monoclonal antibodies and knockout edited cell lines for gold-standard validation. Please check that this product meets your needs before purchasing.

If you have any questions, special requirements or concerns, please send us an inquiry and/or contact our Support team ahead of purchase. Recommended alternatives for this product can be found below, along with publications, customer reviews and Q&As

性能

形式	Liquid
存放说明	Shipped at 4°C. Upon delivery aliquot and store at -20°C or -80°C. Avoid repeated freeze / thaw cycles.
存储溶液	pH: 7.30 Preservative: 0.02% Sodium azide Constituents: 0.5% Tris, 0.5% BSA
纯度	Immunogen affinity purified
纯化说明	Purified from goat serum by ammonium sulphate precipitation followed by antigen affinity chromatography using the immunizing peptide.
克隆	多克隆
同种型	IgG

The Abpromise guarantee **Abpromise™**承诺保证使用ab3935于以下的经测试应用

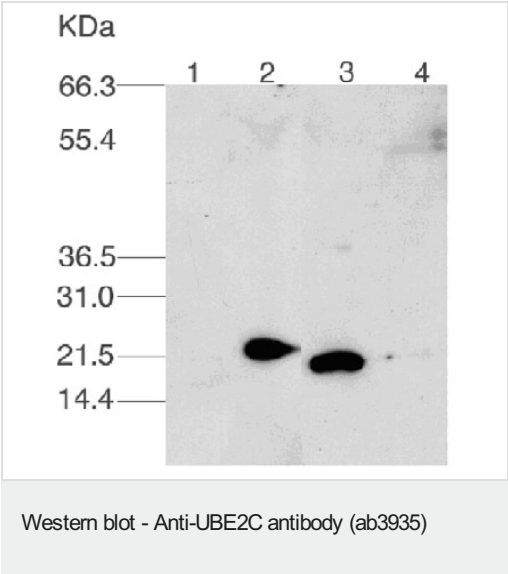
“应用说明”部分 下显示的仅为推荐的起始稀释度;实际最佳的稀释度/浓度应由使用者检定。

应用	Ab评论	说明
WB		Use a concentration of 2.5 µg/ml. Detects a band of approximately 20 kDa (predicted molecular weight: 21.5 kDa). A 1 hour primary incubation is recommended for this product.
IP		Use at an assay dependent concentration. (See Abreview)

靶标

功能	Accepts ubiquitin from the E1 complex and catalyzes its covalent attachment to other proteins. In vitro catalyzes 'Lys-11'- and 'Lys-48'-linked polyubiquitination. Acts as an essential factor of the anaphase promoting complex/cyclosome (APC/C), a cell cycle-regulated ubiquitin ligase that controls progression through mitosis. Acts by initiating 'Lys-11'-linked polyubiquitin chains on APC/C substrates, leading to the degradation of APC/C substrates by the proteasome and promoting mitotic exit.
通路	Protein modification; protein ubiquitination.
序列相似性	Belongs to the ubiquitin-conjugating enzyme family.
翻译后修饰	Autoubiquitinated by the APC/C complex, leading to its degradation by the proteasome. Its degradation plays a central role in APC/C regulation, allowing cyclin-A accumulation before S phase entry. APC/C substrates inhibit the autoubiquitination of UBE2C/UBCH10 but not its E2 function, hence APC/C remaining active until its substrates have been destroyed.

图片



ab3935 at a 2.5µg/ml concentration staining approximately 20 kDa UBE2C by Western blot (ECL):

- Lane 1 = pCDNA3 transfected U2OS whole cell lysate (2µl).
- Lane 2 = pCDNA3 MycUbch10 transfected whole cell lysate (2µl).
- Lane 3 = Nocodazole arrested HeLa cell whole cell lysate (20µl).
- Lane 4 = Asynchronous HeLa cell whole cell lysate (20µl).

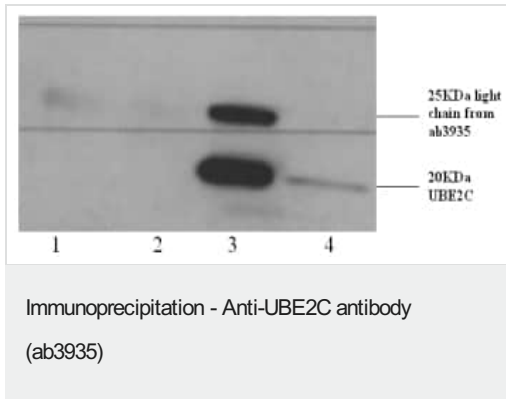
For a more detailed description, please click the reviews tab at the top of the page and see the review dated 25/02/03.

ab3935 at a 2.5µg/ml concentration staining approximately 20 kDa UBE2C by Western blot (ECL):

- Lane 1 = pCDNA3 transfected U2OS whole cell lysate (2µl).
- Lane 2 = pCDNA3 MycUbch10 transfected whole cell lysate (2µl).
- Lane 3 = Nocodazole arrested HeLa cell whole cell lysate (20µl).

Lane 4 = Asynchronous HeLa cell whole cell lysate (20µl).

For a more detailed descri



ab3935 staining approximately 20 kDa human UBE2 after immunoprecipitation from HeLa whole cell lysate (10^6 cells/ml) using 40µl of ab3935 saturated protein G dynabeads, by Western blot (ECL):

Lane 1 = IP from Noc arrested HeLa cell extract (beads only).

Lane 2 = IP from Noc arrested HeLa cell extract (goat whole serum coupled to beads).

Lane 3 = IP from Noc arrested HeLa cell extract (ab3935 coupled to beads)

Lane 4 = Noc arrested HeLa whole cell lysate.

For a more detailed description, please click the reviews tab at the top of the page and see the review dated 25/02/03.

Please note: All products are "FOR RESEARCH USE ONLY. NOT FOR USE IN DIAGNOSTIC PROCEDURES"

Our Abpromise to you: Quality guaranteed and expert technical support

- Replacement or refund for products not performing as stated on the datasheet
- Valid for 12 months from date of delivery
- Response to your inquiry within 24 hours
- We provide support in Chinese, English, French, German, Japanese and Spanish
- Extensive multi-media technical resources to help you
- We investigate all quality concerns to ensure our products perform to the highest standards

If the product does not perform as described on this datasheet, we will offer a refund or replacement. For full details of the Abpromise, please visit <https://www.abcam.cn/abpromise> or contact our technical team.

Terms and conditions

- Guarantee only valid for products bought direct from Abcam or one of our authorized distributors