

Anti-UBAP2L antibody ab70319

[7 References](#) [2 图像](#)

概述

产品名称	Anti-UBAP2L 抗体
描述	兔多克隆抗体 to UBAP2L
宿主	Rabbit
经测试应用	适用于: WB, IP
种属反应性	与反应: Human
免疫原	Synthetic peptide corresponding to a region between residues 400 and 450 of human UBAP2L (AAH03170.1).
阳性对照	WB: HeLa whole cell lysate; IP: HEK293T cells
常规说明	<p>The Life Science industry has been in the grips of a reproducibility crisis for a number of years. Abcam is leading the way in addressing this with our range of recombinant monoclonal antibodies and knockout edited cell lines for gold-standard validation. Please check that this product meets your needs before purchasing.</p> <p>If you have any questions, special requirements or concerns, please send us an inquiry and/or contact our Support team ahead of purchase. Recommended alternatives for this product can be found below, along with publications, customer reviews and Q&As</p>

性能

形式	Liquid
存放说明	Shipped at 4°C. Upon delivery aliquot and store at -20°C. Avoid freeze / thaw cycles.
存储溶液	pH: 7 Preservative: 0.09% Sodium azide Constituents: 1.815% Tris, 1.764% Sodium citrate, 0.021% PBS
纯度	Immunogen affinity purified
克隆	多克隆
同种型	IgG

应用

The Abpromise guarantee

Abpromise™ 承诺保证使用 ab70319 于以下的经测试应用

“应用说明”部分 下显示的仅为推荐的起始稀释度;实际最佳的稀释度/浓度应由使用者检定。

应用	Ab评论	说明
WB		1/10000 - 1/25000. Detects a band of approximately 160 kDa (predicted molecular weight: 115 kDa).
IP		Use at 2-10 µg/mg of lysate.

靶标

组织特异性

Ubiquitous.

序列相似性

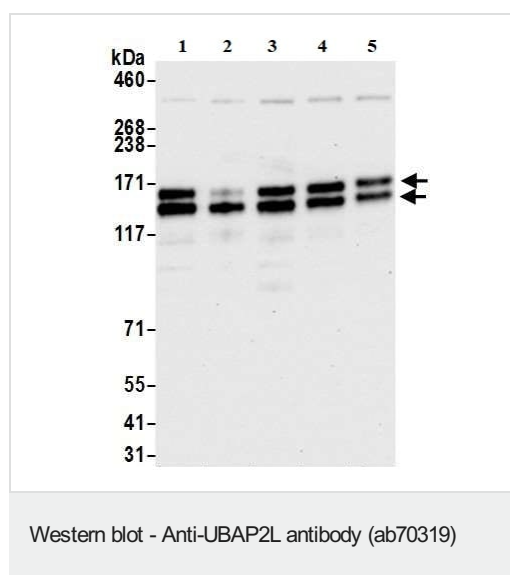
Contains 1 UBA domain.

翻译后修饰

Phosphorylated upon DNA damage, probably by ATM or ATR.

Acetylated.

图片



All lanes : Anti-UBAP2L antibody (ab70319) at 0.04 µg/ml

Lane 1 : HEK-293T (human epithelial cell line from embryonic kidney transformed with large T antigen) whole cell lysate

Lane 2 : HeLa (human epithelial cell line from cervix adenocarcinoma) whole cell lysate

Lane 3 : Jurkat (human T cell leukemia cell line from peripheral blood) whole cell lysate

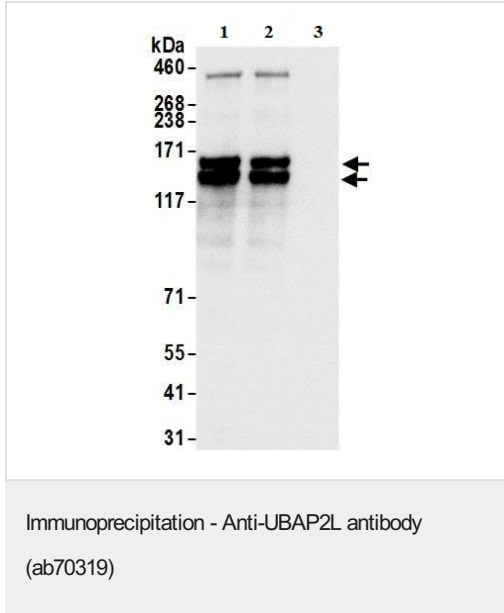
Lane 4 : K562 (human chronic myelogenous leukemia cell line from bone marrow) whole cell lysate

Lane 5 : MCF7 (human breast adenocarcinoma cell line) whole cell lysate

Lysates/proteins at 10 µg per lane.

Predicted band size: 115 kDa

Exposure time: 10 seconds



UBAP2L was immunoprecipitated from HEK-293T whole cell lysate (1 mg per IP reaction, 20% loaded) with ab70319 at 6 µg per reaction. Western blot was performed on the immunoprecipitate using ab70319 at 0.04 µg/mL.

Lane 1: ab70319 IP in HEK-293T whole cell lysate.

Lane 2: ab70319 IP in HEK-293T whole cell lysate.

Lane 2: Control IgG in HEK-293T whole cell lysate.

Detection: Chemiluminescence with an exposure time of 1 second.

Please note: All products are "FOR RESEARCH USE ONLY. NOT FOR USE IN DIAGNOSTIC PROCEDURES"

Our Abpromise to you: Quality guaranteed and expert technical support

- Replacement or refund for products not performing as stated on the datasheet
- Valid for 12 months from date of delivery
- Response to your inquiry within 24 hours
- We provide support in Chinese, English, French, German, Japanese and Spanish
- Extensive multi-media technical resources to help you
- We investigate all quality concerns to ensure our products perform to the highest standards

If the product does not perform as described on this datasheet, we will offer a refund or replacement. For full details of the Abpromise, please visit <https://www.abcam.cn/abpromise> or contact our technical team.

Terms and conditions

- Guarantee only valid for products bought direct from Abcam or one of our authorized distributors