

# Anti-TUSC5 antibody ab64803

## 2 图像

### 概述

产品名称	Anti-TUSC5抗体
描述	兔多克隆抗体to TUSC5
宿主	Rabbit
经测试应用	适用于: WB, ICC/IF
种属反应性	与反应: Human
免疫原	A synthetic peptide derived from an internal region of human TUSC5
阳性对照	ICC/IF: HeLa cells WB: Extracts from LOVO cells
常规说明	<p>The Life Science industry has been in the grips of a reproducibility crisis for a number of years. Abcam is leading the way in addressing this with our range of recombinant monoclonal antibodies and knockout edited cell lines for gold-standard validation. Please check that this product meets your needs before purchasing.</p> <p>If you have any questions, special requirements or concerns, please send us an inquiry and/or contact our Support team ahead of purchase. Recommended alternatives for this product can be found below, along with publications, customer reviews and Q&amp;As</p>

### 性能

形式	Liquid
存放说明	Shipped at 4°C. Store at -20°C. Stable for 12 months at -20°C.
存储溶液	<p>pH: 7.40</p> <p>Preservative: 0.02% Sodium azide</p> <p>Constituents: PBS, 50% Glycerol (glycerin, glycerine), 0.87% Sodium chloride</p>
纯度	Immunogen affinity purified
纯化说明	The antibody was affinity purified from rabbit antiserum by affinity chromatography using epitope specific immunogen.
克隆	多克隆
同种型	IgG

### 应用

## The Abpromise guarantee

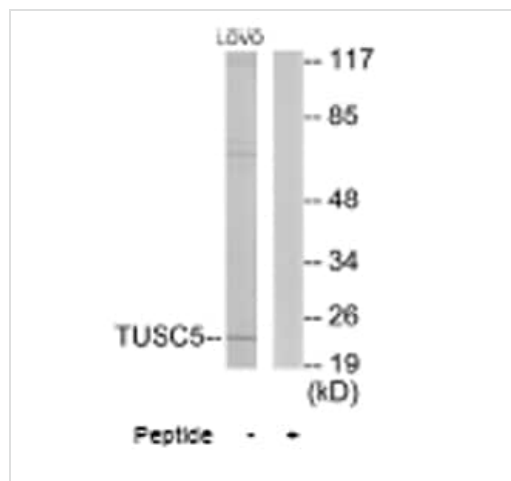
**Abpromise™** 承诺保证使用ab64803于以下的经测试应用

“应用说明”部分 下显示的仅为推荐的起始稀释度;实际最佳的稀释度/浓度应由使用者检定。

应用	Ab评论	说明
<b>WB</b>		1/500 - 1/1000. Detects a band of approximately 22 kDa (predicted molecular weight: 19 kDa).
<b>ICC/IF</b>		1/500 - 1/1000.

## 靶标

## 图片



Western blot - Anti-TUSC5 antibody (ab64803)

**All lanes :** Anti-TUSC5 antibody (ab64803) at 1/500 dilution

**Lane 1 :** Extracts from LOVO cells

**Lane 2 :** Extracts from LOVO cells plus peptide at 10µg

Lysates/proteins at 5 µg per lane.

**Predicted band size:** 19 kDa

**Observed band size:** 22 kDa



Immunocytochemistry/ Immunofluorescence - Anti-TUSC5 antibody (ab64803)

Immunofluorescence analysis of HeLa cells using ab64803 at a 1:500 dilution.

Left image untreated.

Right image treated with peptide.

**Please note:** All products are "FOR RESEARCH USE ONLY. NOT FOR USE IN DIAGNOSTIC PROCEDURES"

### **Our Abpromise to you: Quality guaranteed and expert technical support**

---

- Replacement or refund for products not performing as stated on the datasheet
- Valid for 12 months from date of delivery
- Response to your inquiry within 24 hours
  
- We provide support in Chinese, English, French, German, Japanese and Spanish
- Extensive multi-media technical resources to help you
- We investigate all quality concerns to ensure our products perform to the highest standards

If the product does not perform as described on this datasheet, we will offer a refund or replacement. For full details of the Abpromise, please visit <https://www.abcam.cn/abpromise> or contact our technical team.

### **Terms and conditions**

---

- Guarantee only valid for products bought direct from Abcam or one of our authorized distributors