

# Anti-TUG antibody [EPR8616] ab131217

敲除验证
重组
RabMAb

### 3 图像

#### 概述

<b>产品名称</b>	Anti-TUG抗体[EPR8616]
<b>描述</b>	兔单克隆抗体[EPR8616] to TUG
<b>宿主</b>	Rabbit
<b>经测试应用</b>	<b>适用于:</b> WB <b>不适用于:</b> Flow Cyt, ICC/IF or IHC-P
<b>种属反应性</b>	<b>与反应:</b> Mouse, Human <b>预测可用于:</b> Rat 
<b>免疫原</b>	Synthetic peptide. This information is proprietary to Abcam and/or its suppliers.
<b>阳性对照</b>	K562, 293T, and SW480 cell lysates.
<b>常规说明</b>	<p>This product is a recombinant monoclonal antibody, which offers several advantages including:</p> <ul style="list-style-type: none"> <li>- High batch-to-batch consistency and reproducibility</li> <li>- Improved sensitivity and specificity</li> <li>- Long-term security of supply</li> <li>- Animal-free production</li> </ul> <p>For more information <a href="#">see here</a>.</p> <p>Our RabMAb<sup>®</sup> technology is a patented hybridoma-based technology for making rabbit monoclonal antibodies. For details on our patents, please refer to <a href="#">RabMAb<sup>®</sup> patents</a>.</p>

#### 性能

<b>形式</b>	Liquid
<b>存放说明</b>	Shipped at 4°C. Store at -20°C. Stable for 12 months at -20°C.
<b>存储溶液</b>	pH: 7.20 Preservative: 0.01% Sodium azide Constituents: 9% PBS, 40% Glycerol (glycerin, glycerine), 0.05% BSA, 50% Tissue culture supernatant
<b>纯度</b>	Protein A purified
<b>克隆</b>	单克隆
<b>克隆编号</b>	EPR8616

## 应用

## The Abpromise guarantee

Abpromise™承诺保证使用ab131217于以下的经测试应用

“应用说明”部分 下显示的仅为推荐的起始稀释度;实际最佳的稀释度/浓度应由使用者检定。

应用	Ab评论	说明
WB		1/10000 - 1/50000. Predicted molecular weight: 60 kDa.

## 应用说明

Is unsuitable for Flow Cyt, ICC/IF or IHC-P.

## 靶标

## 功能

Tethering protein that sequesters GLUT4-containing vesicles in the cytoplasm in the absence of insulin. Modulates the amount of GLUT4 that is available at the cell surface.

## 组织特异性

Ubiquitous. Highly expressed in testis, heart, skeletal muscle and pancreas.

## 疾病相关

Note=A chromosomal aberration involving ASPSCR1 is found in patients with alveolar soft part sarcoma. Translocation t(X;17)(p11;q25) with TFE3 forms a ASPSCR1-TFE3 fusion protein.

Note=A chromosomal aberration involving ASPSCR1 has been found in two patients with of papillary renal cell carcinoma. Translocation t(X;17)(p11.2;q25).

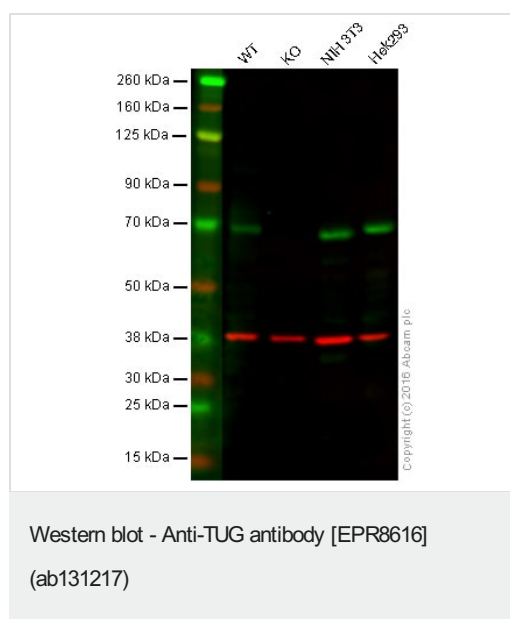
## 序列相似性

Contains 1 UBX domain.

## 细胞定位

Endomembrane system.

## 图片



Lane 1: Wild-type HAP1 cell lysate (20 µg)

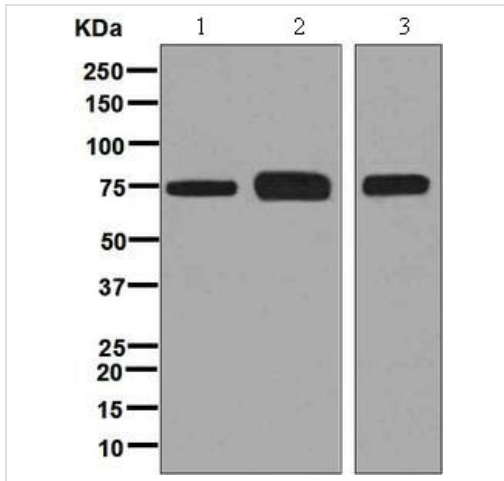
Lane 2: TUG knockout HAP1 cell lysate (20 µg)

Lane 3: NIH/3T3 cell lysate (20 µg)

Lane 4: HEK293 cell lysate (20 µg)

Lanes 1 - 4: Merged signal (red and green). Green - ab131217 observed at 70 kDa. Red - loading control, [ab8245](#), observed at 37 kDa.

ab131217 was shown to specifically react with TUG when TUG knockout samples were used. Wild-type and TUG knockout samples were subjected to SDS-PAGE. ab131217 and [ab8245](#) (loading control to GAPDH) were both diluted 1/10000 and incubated overnight at 4°C. Blots were developed with Goat anti-Rabbit IgG H&L (IRDye® 800CW) preadsorbed [ab216773](#) and Goat anti-Mouse IgG H&L (IRDye® 680RD) preadsorbed [ab216776](#) secondary antibodies at 1/10000 dilution for 1 hour at room temperature before imaging.



Western blot - Anti-TUG antibody [EPR8616]  
(ab131217)

**All lanes :** Anti-TUG antibody [EPR8616] (ab131217) at 1/10000 dilution

**Lane 1 :** K562 cell lysate





**Lane 2 :** 293T cell lysate

**Lane 3 :** SW480 cell lysate

Lysates/proteins at 10 µg per lane.

**Predicted band size:** 60 kDa

Why choose a recombinant antibody?

 <p><b>Research with confidence</b> Consistent and reproducible results</p>	 <p><b>Long-term and scalable supply</b> Recombinant technology</p>
 <p><b>Success from the first experiment</b> Confirmed specificity</p>	 <p><b>Ethical standards compliant</b> Animal-free production</p>

Anti-TUG antibody [EPR8616] (ab131217)

**Please note:** All products are "FOR RESEARCH USE ONLY. NOT FOR USE IN DIAGNOSTIC PROCEDURES"

### Our Abpromise to you: Quality guaranteed and expert technical support

- Replacement or refund for products not performing as stated on the datasheet
- Valid for 12 months from date of delivery
- Response to your inquiry within 24 hours
- We provide support in Chinese, English, French, German, Japanese and Spanish
- Extensive multi-media technical resources to help you
- We investigate all quality concerns to ensure our products perform to the highest standards

If the product does not perform as described on this datasheet, we will offer a refund or replacement. For full details of the Abpromise, please visit <https://www.abcam.cn/abpromise> or contact our technical team.

## Terms and conditions

---

- Guarantee only valid for products bought direct from Abcam or one of our authorized distributors