

### Anti-TUG antibody [EPR8615] ab131237

敲除验证
重组
RabMAb

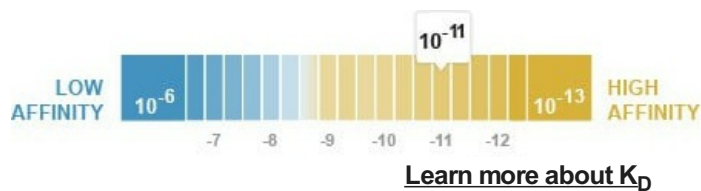
[1 Abreviews](#)
[5 图像](#)

#### 概述

|              |   |
|--------------|---|
| <b>产品名称</b>  | Anti-TUG抗体[EPR8615]   |
| <b>描述</b>    | 兔单克隆抗体[EPR8615] to TUG  |
| <b>宿主</b>    | Rabbit  |
| <b>经测试应用</b> | <b>适用于:</b> WB, IHC-P<br><b>不适用于:</b> Flow Cyt or ICC/IF  |
| <b>种属反应性</b> | <b>与反应:</b> Mouse, Human<br><b>预测可用于:</b> Rat    |
| <b>免疫原</b>   | Synthetic peptide. This information is proprietary to Abcam and/or its suppliers.   |
| <b>阳性对照</b>  | K562, 293T, and SW480 cell lysates for Western Blot and Human colon tissue for IHC-P.   |
| <b>常规说明</b>  | <p>This product is a recombinant monoclonal antibody, which offers several advantages including:</p> <ul style="list-style-type: none"> <li>- High batch-to-batch consistency and reproducibility</li> <li>- Improved sensitivity and specificity</li> <li>- Long-term security of supply</li> <li>- Animal-free production</li> </ul> <p>For more information <a href="#">see here</a>.</p> <p>Our RabMAb<sup>®</sup> technology is a patented hybridoma-based technology for making rabbit monoclonal antibodies. For details on our patents, please refer to <a href="#">RabMAb<sup>®</sup> patents</a>.</p> |

#### 性能

|                             |   |
|-----------------------------|---|
| <b>形式</b>                   | Liquid                                      |
| <b>存放说明</b>                 | Shipped at 4°C. Store at -20°C.             |
| <b>解离常数 (K<sub>D</sub>)</b> | K <sub>D</sub> = 2.77 x 10 <sup>-11</sup> M |



|             |          |
|-------------|----------|
| <b>存储溶液</b> | pH: 7.20 |
|-------------|----------|

Preservative: 0.01% Sodium azide  
Constituents: 9% PBS, 40% Glycerol (glycerin, glycerine), 0.05% BSA, 50% Tissue culture supernatant

**纯度** Protein A purified  
**克隆** 单克隆  
**克隆编号** EPR8615  
**同种型** IgG

## 应用

**The Abpromise guarantee** **Abpromise™**承诺保证使用ab131237于以下的经测试应用

“应用说明”部分 下显示的仅为推荐的起始稀释度;实际最佳的稀释度/浓度应由使用者检定。

| 应用    | Ab评论 | 说明  |
|-------|------|---|
| WB    |      | 1/10000 - 1/50000. Predicted molecular weight: 60 kDa.  |
| IHC-P |      | 1/100 - 1/250. Perform heat mediated antigen retrieval with citrate buffer pH 6 before commencing with IHC staining protocol. |

**应用说明** Is unsuitable for Flow Cyt or ICC/IF.

## 靶标

**功能** Tethering protein that sequesters GLUT4-containing vesicles in the cytoplasm in the absence of insulin. Modulates the amount of GLUT4 that is available at the cell surface.

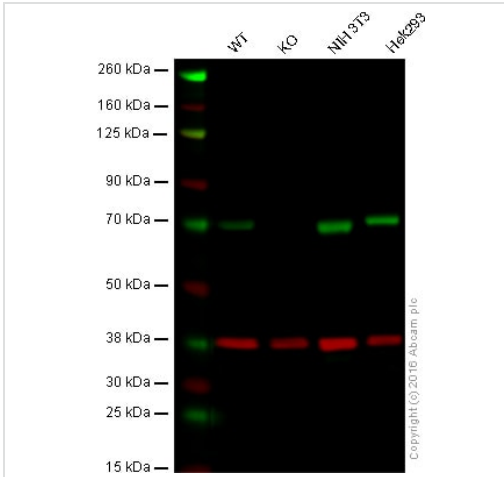
**组织特异性** Ubiquitous. Highly expressed in testis, heart, skeletal muscle and pancreas.

**疾病相关** Note=A chromosomal aberration involving ASPSCR1 is found in patients with alveolar soft part sarcoma. Translocation t(X;17)(p11;q25) with TFE3 forms a ASPSCR1-TFE3 fusion protein. Note=A chromosomal aberration involving ASPSCR1 has been found in two patients with of papillary renal cell carcinoma. Translocation t(X;17)(p11.2;q25).

**序列相似性** Contains 1 UBX domain.

**细胞定位** Endomembrane system.

## 图片



Western blot - Anti-TUG antibody [EPR8615]  
(ab131237)

**Lane 1:** Wild-type HAP1 cell lysate (20 µg)

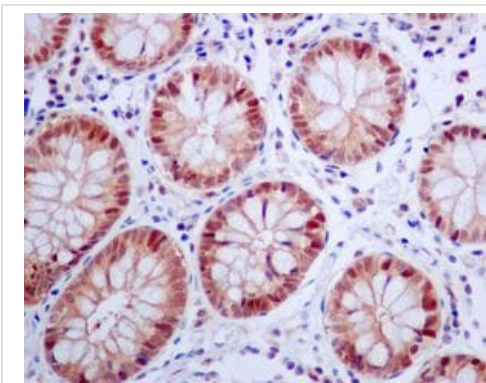
**Lane 2:** TUG knockout HAP1 cell lysate (20 µg)

**Lane 3:** NIH/3T3 cell lysate (20 µg)

**Lane 4:** HEK293 cell lysate (20 µg)

**Lanes 1 - 4:** Merged signal (red and green). Green - ab131237 observed at 70 kDa. Red - loading control, **ab8245**, observed at 37 kDa.

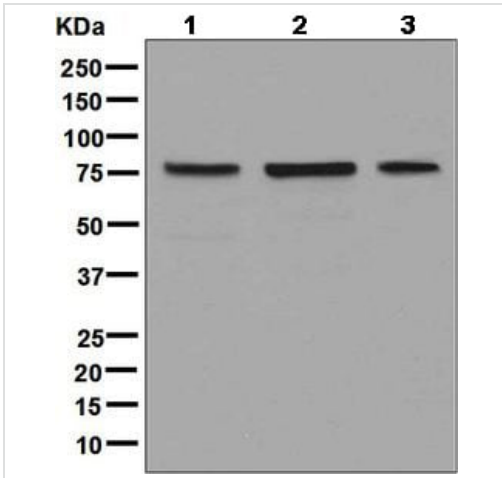
ab131237 was shown to specifically react with TUG when TUG knockout samples were used. Wild-type and TUG knockout samples were subjected to SDS-PAGE. ab131237 and **ab8245** (loading control to GAPDH) were both diluted 1/10 000 and incubated overnight at 4°C. Blots were developed with Goat anti-Rabbit IgG H&L (IRDye® 800CW) preadsorbed **ab216773** and Goat anti-Mouse IgG H&L (IRDye® 680RD) preadsorbed **ab216776** secondary antibodies at 1/10000 dilution for 1 hour at room temperature before imaging.



Immunohistochemistry (Formalin/PFA-fixed paraffin-embedded sections) - Anti-TUG antibody [EPR8615]  
(ab131237)

ab131237, at 1/100, staining TUG in Formalin-fixed, Paraffin-embedded Human colon tissue by Immunohistochemistry.

Perform heat mediated antigen retrieval with citrate buffer pH 6 before commencing with IHC staining protocol.



Western blot - Anti-TUG antibody [EPR8615] (ab131237)

**All lanes** : Anti-TUG antibody [EPR8615] (ab131237) at 1/10000 dilution

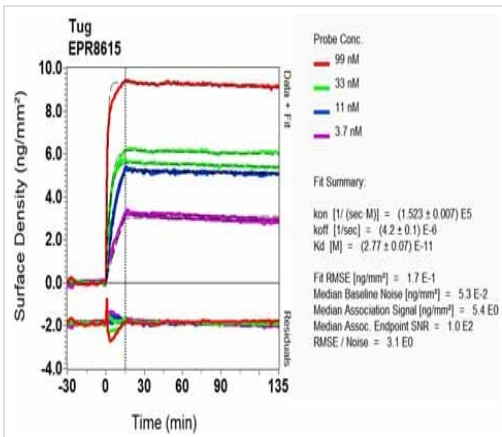
**Lane 1** : K562 cell lysate

**Lane 2** : 293T cell lysate

**Lane 3** : SW480 cell lysate

Lysates/proteins at 10 µg per lane.

**Predicted band size:** 60 kDa







SPR Scanning - Anti-TUG antibody [EPR8615] (ab131237)

Equilibrium dissociation constant ( $K_D$ )

Learn more about  $K_D$

[Click here to learn more about  \$K\_D\$](#)

Why choose a recombinant antibody?

|  |  |
|--|--|
|  <p><b>Research with confidence</b><br/>Consistent and reproducible results</p> |  <p><b>Long-term and scalable supply</b><br/>Recombinant technology</p> |
|  <p><b>Success from the first experiment</b><br/>Confirmed specificity</p>      |  <p><b>Ethical standards compliant</b><br/>Animal-free production</p>   |

Anti-TUG antibody [EPR8615] (ab131237)

**Please note:** All products are "FOR RESEARCH USE ONLY. NOT FOR USE IN DIAGNOSTIC PROCEDURES"

### Our Abpromise to you: Quality guaranteed and expert technical support

---

- Replacement or refund for products not performing as stated on the datasheet
- Valid for 12 months from date of delivery
- Response to your inquiry within 24 hours
- We provide support in Chinese, English, French, German, Japanese and Spanish
- Extensive multi-media technical resources to help you
- We investigate all quality concerns to ensure our products perform to the highest standards

If the product does not perform as described on this datasheet, we will offer a refund or replacement. For full details of the Abpromise, please visit <https://www.abcam.cn/abpromise> or contact our technical team.

### Terms and conditions

---

- Guarantee only valid for products bought direct from Abcam or one of our authorized distributors