


# Anti-Tuberin (phospho S939) antibody [EP1062Y] ab52962

**重组** RabMAb

**3 References**   **3 图像**

### 概述

产品名称	Anti-Tuberin (phospho S939)抗体[EP1062Y]
描述	兔单克隆抗体[EP1062Y] to Tuberin (phospho S939)
宿主	Rabbit
经测试应用	<b>适用于:</b> WB <b>不适用于:</b> Flow Cyt, ICC/IF, IHC-Fr, IHC-P or IP
种属反应性	<b>与反应:</b> Mouse, Human <b>预测可用于:</b> Rat 
免疫原	Synthetic peptide. This information is proprietary to Abcam and/or its suppliers.
阳性对照	3T3 cell lysates (untreated or treated with insulin). WB: SH-SY5Y (Human neuroblastoma epithelial cell) treated with 200nM Okadaic Acid (OA) and 1uM Calyculin A (CA) for 60 min whole cell lysates
常规说明	This product is a recombinant monoclonal antibody, which offers several advantages including: <ul style="list-style-type: none"> <li>- High batch-to-batch consistency and reproducibility</li> <li>- Improved sensitivity and specificity</li> <li>- Long-term security of supply</li> <li>- Animal-free production</li> </ul> For more information <a href="#">see here</a> . Our RabMAb <sup>®</sup> technology is a patented hybridoma-based technology for making rabbit monoclonal antibodies. For details on our patents, please refer to <a href="#">RabMAb<sup>®</sup> patents</a> .

### 性能

形式	Liquid
存放说明	Shipped at 4°C. Store at -20°C. Stable for 12 months at -20°C.
存储溶液	pH: 7.20 Preservative: 0.01% Sodium azide Constituents: 9% PBS, 40% Glycerol (glycerin, glycerine), 0.05% BSA, 50% Tissue culture supernatant
纯度	Protein A purified
克隆	单克隆

同种型 IgG

## The Abpromise guarantee

应用	Ab评论	说明
WB		1/1000 - 1/10000. Detects a band of approximately 180 kDa (predicted molecular weight: 201 kDa).

## 靶标

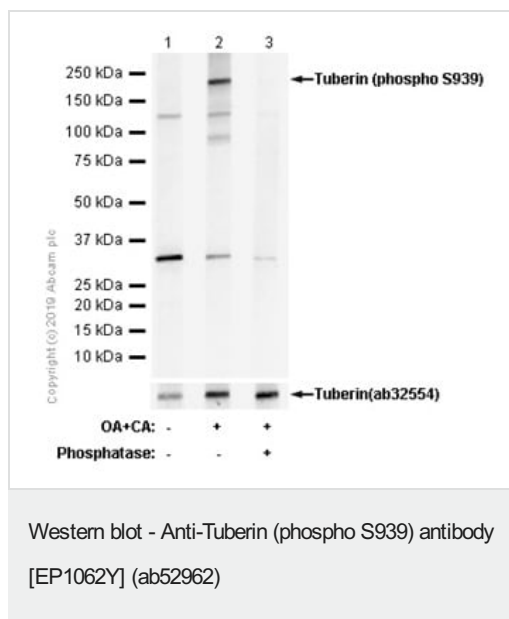
组织特异性	Liver, brain, heart, lymphocytes, fibroblasts, biliary epithelium, pancreas, skeletal muscle, kidney, lung and placenta.
-------	--

Defects in TSC2 are a cause of lymphangioleiomyomatosis (LAM) [MIM:606690]. LAM is a progressive and often fatal lung disease characterized by a diffuse proliferation of abnormal smooth muscle cells in the lungs. It affects almost exclusively young women and can occur as an isolated disorder or in association with tuberous sclerosis complex.

翻译后修饰 Phosphorylation at Ser-1387, Ser-1418 or Ser-1420 does not affect interaction with TSC1.  
Phosphorylation at Ser-939 and Thr-1462 by PKB/AKT1 is induced by growth factor stimulation.

**细胞定位** Cytoplasm. Membrane. At steady state found in association with membranes.

图片



**All lanes :** Anti-Tuberin (phospho S939) antibody [EP1062Y] (ab52962) at 1/1000 dilution

**Lane 1 :** SH-SY5Y (Human neuroblastoma epithelial cell) whole cell lysates

**Lane 2 :** SH-SY5Y (Human neuroblastoma epithelial cell) treated with 200nM Okadaic Acid (OA) and 1uM Calyculin A (CA) for 60 min whole cell lysates

**Lane 3 :** SH-SY5Y (Human neuroblastoma epithelial cell) treated with 200nM Okadaic Acid (OA) and 1uM Calyculin A (CA) for 60 min whole cell lysates. Then the membrane was incubated with phosphatase.

Lysates/proteins at 15 µg per lane.

## Secondary

**All lanes :** Goat Anti-Rabbit IgG H&L (HRP) ([ab97051](#)) at 1/20000 dilution

Developed using the ECL technique.

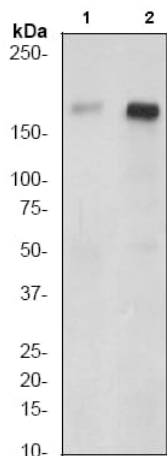
**Predicted band size:** 201 kDa

**Observed band size:** 180 kDa

**Exposure time:** 90 seconds

Blocking/Diluting buffer and concentration: 5% NFDM/TBST.

This image is derived from purified batch.



Western blot - Anti-Tuberin (phospho S939) antibody [EP1062Y]  
[EP1062Y] (ab52962)

**All lanes :** Anti-Tuberin (phospho S939) antibody [EP1062Y]  
(ab52962) at 1/10000 dilution

**Lane 1 :** 3T3 cell lysate untreated

**Lane 2 :** 3T3 cell lysate treated with insulin

Lysates/proteins at 10 µg per lane.

#### Secondary

**All lanes :** goat anti-rabbit HRP at 1/2000 dilution

**Predicted band size:** 201 kDa

**Observed band size:** 180 kDa

#### Why choose a recombinant antibody?



**Research with confidence**  
Consistent and reproducible results



**Long-term and scalable supply**  
Recombinant technology



**Success from the first experiment**  
Confirmed specificity



**Ethical standards compliant**  
Animal-free production

Anti-Tuberin (phospho S939) antibody [EP1062Y]  
(ab52962)

**Please note:** All products are "FOR RESEARCH USE ONLY. NOT FOR USE IN DIAGNOSTIC PROCEDURES"

#### Our Abpromise to you: Quality guaranteed and expert technical support

- Replacement or refund for products not performing as stated on the datasheet
- Valid for 12 months from date of delivery
- Response to your inquiry within 24 hours
- We provide support in Chinese, English, French, German, Japanese and Spanish
- Extensive multi-media technical resources to help you
- We investigate all quality concerns to ensure our products perform to the highest standards

If the product does not perform as described on this datasheet, we will offer a refund or replacement. For full details of the Abpromise, please visit <https://www.abcam.cn/abpromise> or contact our technical team.

## Terms and conditions

---

- Guarantee only valid for products bought direct from Abcam or one of our authorized distributors