


Anti-TTK/Mps1 antibody ab24226

1 图像

概述

产品名称	Anti-TTK/Mps1抗体
描述	兔多克隆抗体to TTK/Mps1
宿主	Rabbit
特异性	ab24226 reacts with TTK (Mps1) protein.
经测试应用	适用于: WB
种属反应性	与反应: Human 预测可用于: Rabbit, Horse, Guinea pig, Cow, Dog, Chimpanzee, Ferret, Cynomolgus monkey, Rhesus monkey, Orangutan, Bat 
免疫原	Synthetic peptide corresponding to Human TTK/Mps1 aa 700-750. Sequence: DVWSLGCILYYMTYGKTPFQQIINQISKLHAIIDPNHEIEFP DIPEKDLQ D

 [Run BLAST with](#)

 [Run BLAST with](#)

常规说明

The Life Science industry has been in the grips of a reproducibility crisis for a number of years. Abcam is leading the way in addressing this with our range of recombinant monoclonal antibodies and knockout edited cell lines for gold-standard validation. Please check that this product meets your needs before purchasing.

If you have any questions, special requirements or concerns, please send us an inquiry and/or contact our Support team ahead of purchase. Recommended alternatives for this product can be found below, along with publications, customer reviews and Q&As

性能

形式	Liquid
存放说明	Shipped at 4°C. Upon delivery aliquot and store at -20°C. Avoid freeze / thaw cycles.
存储溶液	Preservative: 0.09% Sodium azide Constituents: 0.021% PBS, 1.764% Sodium citrate, 1.815% Tris
纯度	Immunogen affinity purified
纯化说明	Antibody was affinity purified using an epitope specific to TTK immobilized on solid support.
克隆	多克隆

同种型IgG

应用

The Abpromise guarantee **Abpromise™**承诺保证使用ab24226于以下的经测试应用

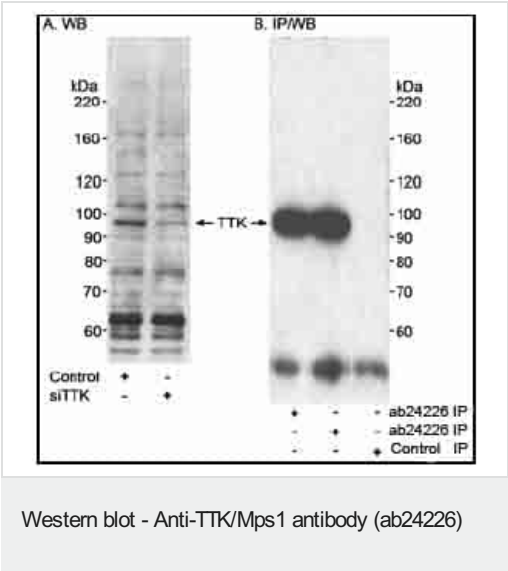
“应用说明”部分 下显示的仅为推荐的起始稀释度;实际最佳的稀释度/浓度应由使用者检定。

应用	Ab评论	说明
WB		1/2500 - 1/25000. Detects a band of approximately 95 kDa (predicted molecular weight: 95 kDa).

靶标

功能	Phosphorylates proteins on serine, threonine, and tyrosine. Probably associated with cell proliferation. Essential for chromosome alignment by enhancing AURKB activity (via direct CDCA8 phosphorylation) at the centromere, and for the mitotic checkpoint.
组织特异性	Present in rapidly proliferating cell lines.
序列相似性	Belongs to the protein kinase superfamily. Ser/Thr protein kinase family. Contains 1 protein kinase domain.

图片



Detection of Human TTK/Mps1 by Western Blot and Immunoprecipitation.

Samples: Whole cell lysate (15 and 50 µg for A; 50 µg for B; 2 mg for B) from HeLa cells. In B, HeLa cells were treated with an siRNA for vimentin (control) or TTK/Mps1 Ab24226 used at 0.033 (A) and 0.33 (B) µg/ml for WB and at 1 µg/2 mg lysate for IP (C). TTK/Mps1 was also immunoprecipitated with Ab24226 using 1 µg/2 mg lysate. IP reactions were controlled using normal rabbit IgG (control IP). Immunoprecipitated TTK/Mps1 was blotted using a goat antibody directed to an upstream epitope on TTK/Mps1. Detection: Chemiluminescence with exposure times of 1 minute (A), 15 seconds (B) and 30 seconds (C).

Please note: All products are "FOR RESEARCH USE ONLY. NOT FOR USE IN DIAGNOSTIC PROCEDURES"

Our Abpromise to you: Quality guaranteed and expert technical support

- Replacement or refund for products not performing as stated on the datasheet

- Valid for 12 months from date of delivery
- Response to your inquiry within 24 hours
- We provide support in Chinese, English, French, German, Japanese and Spanish
- Extensive multi-media technical resources to help you
- We investigate all quality concerns to ensure our products perform to the highest standards

If the product does not perform as described on this datasheet, we will offer a refund or replacement. For full details of the Abpromise, please visit <https://www.abcam.cn/abpromise> or contact our technical team.

Terms and conditions

- Guarantee only valid for products bought direct from Abcam or one of our authorized distributors