

Anti-TTC5 antibody ab36855

[1 References](#) [4 图像](#)

概述

产品名称	Anti-TTC5抗体
描述	兔多克隆抗体to TTC5
宿主	Rabbit
经测试应用	适用于: WB, IHC-P, ICC/IF
种属反应性	与反应: Mouse, Human
免疫原	A 14 amino acid peptide from near the carboxy terminus of human TTC5.
阳性对照	RAW264.7 cell lysate.
常规说明	<p>The Life Science industry has been in the grips of a reproducibility crisis for a number of years. Abcam is leading the way in addressing this with our range of recombinant monoclonal antibodies and knockout edited cell lines for gold-standard validation. Please check that this product meets your needs before purchasing.</p> <p>If you have any questions, special requirements or concerns, please send us an inquiry and/or contact our Support team ahead of purchase. Recommended alternatives for this product can be found below, along with publications, customer reviews and Q&As</p>

性能

形式	Liquid
存放说明	Shipped at 4°C. Store at +4°C.
存储溶液	pH: 7.2 Preservative: 0.02% Sodium azide Constituent: PBS
纯度	Immunogen affinity purified
克隆	多克隆
同种型	IgG

应用

The Abpromise guarantee **Abpromise™**承诺保证使用ab36855于以下的经测试应用

“应用说明”部分 下显示的仅为推荐的起始稀释度;实际最佳的稀释度/浓度应由使用者检定。

应用	Ab评论	说明
WB		Use a concentration of 0.5 - 2 µg/ml. Detects a band of approximately 49 kDa (predicted molecular weight: 49 kDa).
IHC-P		Use a concentration of 10 µg/ml.
ICC/IF		Use at an assay dependent concentration.

靶标

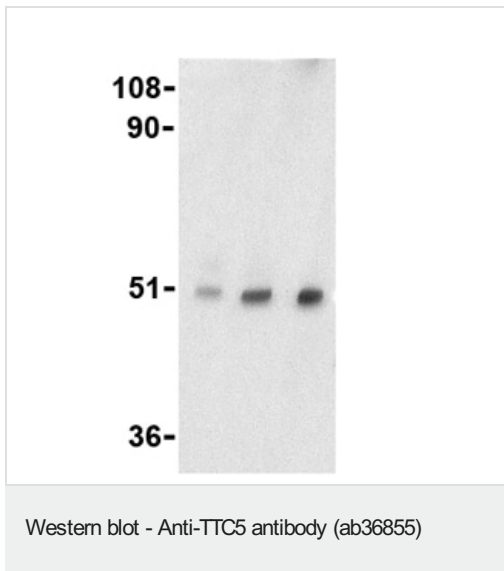
相关性

Tetratricopeptide repeat protein 5 (TTC5) is a member of a diverse group of functionally distinct proteins that are characterized by containing one or more tetratricopeptide repeats. Each motif consists of two anti-parallel α -helices such that tandem arrays of TPR motifs generate a right-handed helical structure with an amphipathic channel that may serve to accommodate the complementary region of a target protein. While the exact function of TTC5 remains unclear, it is thought that the TPR motifs serve to mediate protein-protein interactions such as those seen with protein chaperones HSP70 and HSP90 and some proteins involved in cell stress response signaling pathways such as protein phosphatase 5, suggesting that TTC5 may also function via protein-protein interactions mediated by its TPR motifs.

细胞定位

Nucleus. Cytoplasm. Note: Phosphorylation at Ser-203 results in nuclear localization, while unphosphorylated protein localizes to the cytoplasm

图片



Lane 1 : Anti-TTC5 antibody (ab36855) at 0.5 µg/ml

Lane 2 : Anti-TTC5 antibody (ab36855) at 1 µg/ml

Lane 3 : Anti-TTC5 antibody (ab36855) at 2 µg/ml

Lane 1 : RAW 264.7 (Mouse macrophage cell line transformed with Abelson murine leukemia virus) whole cell lysate

Lanes 2-3 : RAW264.7 cell lysate

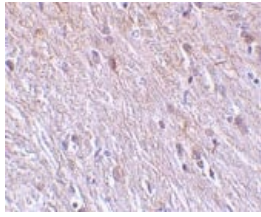
Lysates/proteins at 15 µg/ml per lane.

Secondary

All lanes : anti-rabbit IgG HRP at 1/10000 dilution

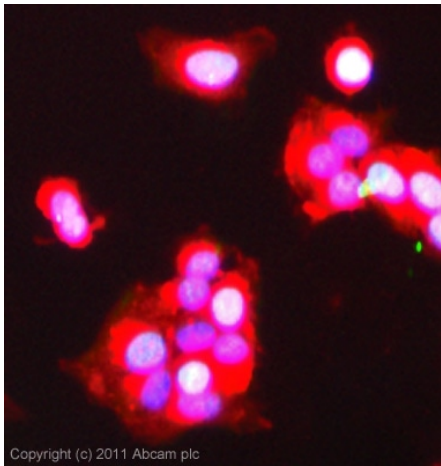
Predicted band size: 49 kDa

Observed band size: 49 kDa



Immunohistochemistry (Formalin/PFA-fixed paraffin-embedded sections) - Anti-TTC5 antibody (ab36855)

ab36855 at 10µg/ml staining TCC5 in mouse brain tissue by IHC



Immunocytochemistry/ Immunofluorescence - Anti-TTC5 antibody (ab36855)

ICC/IF image of ab36855 stained MCF7 cells. The cells were 100% methanol fixed (5 min) and then incubated in 1%BSA / 10% normal goat serum / 0.3M glycine in 0.1% PBS-Tween for 1h to permeabilise the cells and block non-specific protein-protein interactions. The cells were then incubated with the antibody (ab36855, 5µg/ml) overnight at +4°C. The secondary antibody (green) was [ab96899](#) Dylight 488 goat anti-rabbit IgG (H+L) used at a 1/250 dilution for 1h. Alexa Fluor®594 WGA was used to label plasma membranes (red) at a 1/200 dilution for 1h. DAPI was used to stain the cell nuclei (blue) at a concentration of 1.43µM.

Immunocytochemistry/ Immunofluorescence - Anti-TTC5 antibody (ab36855)

Immunofluorescence of TTC5 in Mouse Brain cells using ab36855 at 20 ug/ml.

Please note: All products are "FOR RESEARCH USE ONLY. NOT FOR USE IN DIAGNOSTIC PROCEDURES"

Our Abpromise to you: Quality guaranteed and expert technical support

- Replacement or refund for products not performing as stated on the datasheet
- Valid for 12 months from date of delivery
- Response to your inquiry within 24 hours
- We provide support in Chinese, English, French, German, Japanese and Spanish
- Extensive multi-media technical resources to help you
- We investigate all quality concerns to ensure our products perform to the highest standards

If the product does not perform as described on this datasheet, we will offer a refund or replacement. For full details of the Abpromise,

please visit <https://www.abcam.cn/abpromise> or contact our technical team.

Terms and conditions

- Guarantee only valid for products bought direct from Abcam or one of our authorized distributors