

# Anti-TSGA14 antibody ab86180

## 2 图像

### 概述

产品名称	Anti-TSGA14抗体
描述	兔多克隆抗体to TSGA14
宿主	Rabbit
经测试应用	适用于: WB, IP
种属反应性	与反应: Human 预测可用于: Chimpanzee, Gorilla, Orangutan 
免疫原	A region between residue 150 and 200 of human TSGA14 (NP_061188.1).
阳性对照	HeLa and 293T whole cell lysate.
常规说明	<p>The Life Science industry has been in the grips of a reproducibility crisis for a number of years. Abcam is leading the way in addressing this with our range of recombinant monoclonal antibodies and knockout edited cell lines for gold-standard validation. Please check that this product meets your needs before purchasing.</p> <p>If you have any questions, special requirements or concerns, please send us an inquiry and/or contact our Support team ahead of purchase. Recommended alternatives for this product can be found below, along with publications, customer reviews and Q&amp;As</p>

### 性能

形式	Liquid
存放说明	Shipped at 4°C. Upon delivery aliquot and store at -20°C. Avoid freeze / thaw cycles.
存储溶液	<p>pH: 6.8</p> <p>Preservative: 0.09% Sodium azide</p> <p>Constituents: 0.1% BSA, Tris buffered saline</p>
纯度	Immunogen affinity purified
纯化说明	Affinity purified using an epitope specific to TSGA14 immobilized on solid support.
克隆	多克隆
同种型	IgG

### 应用

## The Abpromise guarantee

**Abpromise™** 承诺保证使用ab86180于以下的经测试应用

“应用说明”部分 下显示的仅为推荐的起始稀释度;实际最佳的稀释度/浓度应由使用者检定。

应用	Ab评论	说明
WB		1/2000 - 1/10000. Detects a band of approximately 41 kDa (predicted molecular weight: 41 kDa).
IP		Use at 2-5 µg/mg of lysate.

## 靶标

### 功能

Required during ciliogenesis for tubulin glutamylation in cilium. Probably acts by participating to the transport of TTL6, a tubulin polyglutamylase, between the basal body and the cilium.

### 组织特异性

Isoform 1 and isoform 4 are expressed in testis and fetal tissues.

### 疾病相关

Defects in CEP41 are the cause of Joubert syndrome type 15 (JBTS15) [MIM:614464]. JBTS15 is an autosomal recessive disorder presenting with cerebellar ataxia, oculomotor apraxia, hypotonia, neonatal breathing abnormalities and psychomotor delay. Neuroradiologically, it is characterized by cerebellar vermal hypoplasia/aplasia, thickened and reoriented superior cerebellar peduncles, and an abnormally large interpeduncular fossa, giving the appearance of a molar tooth on transaxial slices (molar tooth sign). Additional variable features include retinal dystrophy, renal disease, liver fibrosis and polydactyly.

Note=Genetic variations in CEP41 may be associated with susceptibility to autism.

### 序列相似性

Belongs to the CEP41 family.

Contains 1 rhodanese domain.

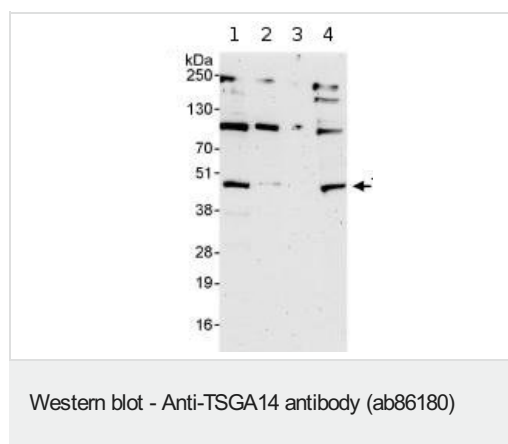
### 结构域

Although it contains a rhodanese domain, does not display phosphatase activity, suggesting that the protein is enzymatically inactive (PubMed:22246503).

### 细胞定位

Cytoplasm > cytoskeleton > centrosome. Cell projection > cilium. Cytoplasm > cytoskeleton > cilium basal body. Localizes mainly to the cilium basal body and in primary cilia.

## 图片



Western blot - Anti-TSGA14 antibody (ab86180)

**All lanes :** Anti-TSGA14 antibody (ab86180) at 0.04 µg/ml

**Lane 1 :** HeLa whole cell lysate at 50 µg

**Lane 2 :** HeLa whole cell lysate at 15 µg

**Lane 3 :** HeLa whole cell lysate at 5 µg

**Lane 4 :** 293T whole cell lysate at 50 µg/ml

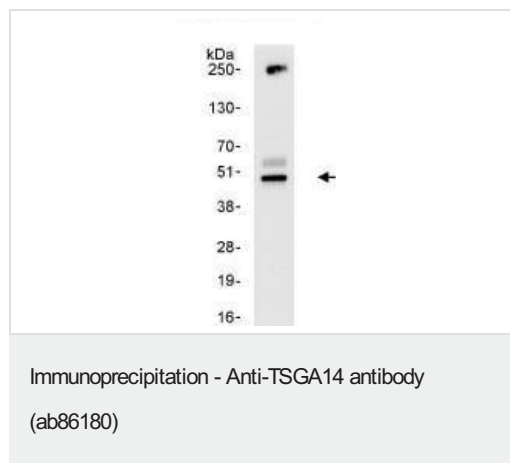
Developed using the ECL technique.

**Predicted band size:** 41 kDa

**Observed band size:** 41 kDa

**Additional bands at:** 100 kDa, 200 kDa, 250 kDa. We are unsure as to the identity of these extra bands.

**Exposure time:** 3 minutes



Detection of Human TSGA14 by Immunoprecipitation, using ab86180 at 3µg/mg lysate. Image shows immunoprecipitated TSGA14 detected with post IP WB, loading 20% of IP and using HeLa whole cell lysate at 1 mg. Detection: Chemiluminescence with an exposure time of 30 seconds.

**Please note:** All products are "FOR RESEARCH USE ONLY. NOT FOR USE IN DIAGNOSTIC PROCEDURES"

### Our Abpromise to you: Quality guaranteed and expert technical support

---

- Replacement or refund for products not performing as stated on the datasheet
- Valid for 12 months from date of delivery
- Response to your inquiry within 24 hours
- We provide support in Chinese, English, French, German, Japanese and Spanish
- Extensive multi-media technical resources to help you
- We investigate all quality concerns to ensure our products perform to the highest standards

If the product does not perform as described on this datasheet, we will offer a refund or replacement. For full details of the Abpromise, please visit <https://www.abcam.cn/abpromise> or contact our technical team.

### Terms and conditions

---

- Guarantee only valid for products bought direct from Abcam or one of our authorized distributors