



### Anti-TRPV3 antibody [N15/39] ab94582

#### 3 图像

#### 概述

<b>产品名称</b>	Anti-TRPV3抗体[N15/39]
<b>描述</b>	小鼠单克隆抗体[N15/39] to TRPV3
<b>宿主</b>	Mouse
<b>经测试应用</b>	<b>适用于:</b> Flow Cyt, IHC-P, ICC/IF
<b>种属反应性</b>	<b>与反应:</b> Mouse, Human
<b>免疫原</b>	Synthetic peptide corresponding to Rat TRPV3 aa 458-474 (C terminal). Sequence: VSYYRPREGEALPHPLA  <div style="text-align: right;">  <a href="#">Run BLAST with</a>  <a href="#">Run BLAST with</a> </div>
<b>阳性对照</b>	COS-1 cell lysate transiently transfected with TRPV3
<b>常规说明</b>	<p>The clone number has been updated from S15-39 to N15/39, both clone numbers name the same antibody clone.</p> <p>The Life Science industry has been in the grips of a reproducibility crisis for a number of years. Abcam is leading the way in addressing this with our range of recombinant monoclonal antibodies and knockout edited cell lines for gold-standard validation. Please check that this product meets your needs before purchasing.</p> <p>If you have any questions, special requirements or concerns, please send us an inquiry and/or contact our Support team ahead of purchase. Recommended alternatives for this product can be found below, along with publications, customer reviews and Q&amp;As</p>

#### 性能

<b>形式</b>	Liquid
<b>存放说明</b>	Shipped at 4°C. Upon delivery aliquot and store at -20°C. Avoid freeze / thaw cycles.
<b>存储溶液</b>	Preservative: 0.09% Sodium azide Constituents: 50% Glycerol (glycerin, glycerine), PBS
<b>纯度</b>	Protein G purified
<b>克隆</b>	单克隆
<b>克隆编号</b>	N15/39
<b>同种型</b>	IgG2a

## 应用

**The Abpromise guarantee**      **Abpromise™**承诺保证使用ab94582于以下的经测试应用

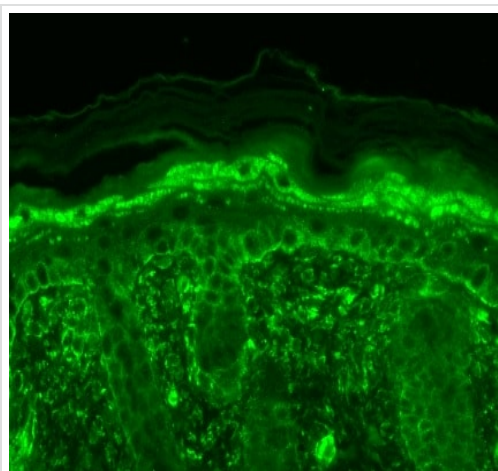
“应用说明”部分下显示的仅为推荐的起始稀释度;实际最佳的稀释度/浓度应由使用者检定。

应用	Ab评论	说明
Flow Cyt		Use 0.1-1µg for 10 <sup>6</sup> cells. <b>ab170191</b> - Mouse monoclonal IgG2a, is suitable for use as an isotype control with this antibody.
IHC-P		Use a concentration of 0.1 - 1 µg/ml.
ICC/IF		Use a concentration of 1 - 10 µg/ml.

## 靶标

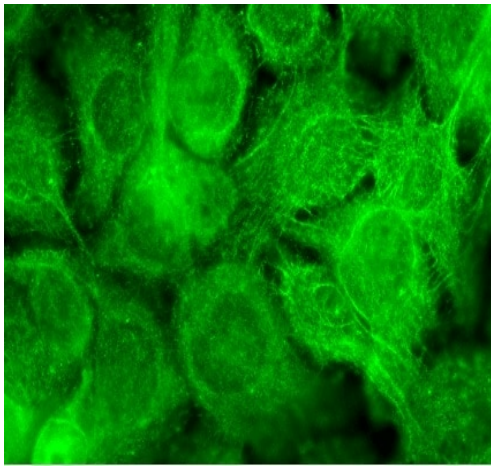
功能	Putative receptor-activated non-selective calcium permeant cation channel. It is activated by innocuous (warm) temperatures and shows an increased response at noxious temperatures greater than 39 degrees Celsius. Activation exhibits an outward rectification. May associate with TRPV1 and may modulate its activity.
组织特异性	Abundantly expressed in CNS. Widely expressed at low levels. Detected in dorsal root ganglion (at protein level).
序列相似性	Belongs to the transient receptor (TC 1.A.4) family. TrpV subfamily. TRPV3 sub-subfamily. Contains 3 ANK repeats.
细胞定位	Membrane.

## 图片



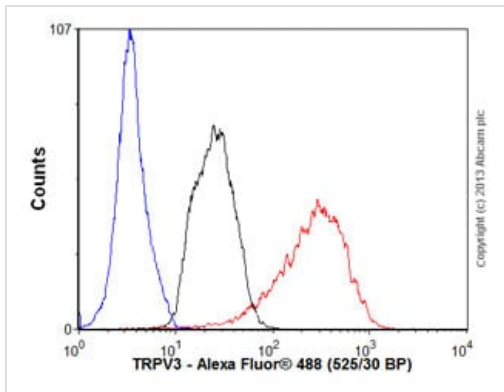
Paraffin-embedded, Bouin's-fixed mouse backskin tissue stained for TRPV3 (green) using ab94582 at 1/100 dilution in immunohistochemical analysis. FITC Goat Anti-Mouse (green) was used as the secondary antibody at 1/50 dilution. Filaggrinlike staining in upper layers. Dull lower layer cell staining. Some stain seen in hypodermis is observed.

Immunohistochemistry (Formalin/PFA-fixed paraffin-embedded sections) - Anti-TRPV3 antibody [N15/39] (ab94582)



Immunocytochemistry/ Immunofluorescence - Anti-TRPV3 antibody [N15/39] (ab94582)

ice cold methanol-fixed HaCat cells labeling TRPV3 (green) using ab94582 at 1/100 dilution in ICC/IF analysis. FITC Goat Anti-Mouse (green) was used as the secondary antibody at 1/50 dilution. Dotty staining in all cells. Some intermediate filamentlike staining in some cells was observed.



Flow Cytometry - Anti-TRPV3 antibody [N15/39] (ab94582)

Overlay histogram showing SH-SY5Y cells stained with ab94582 (red line). The cells were fixed with 4% paraformaldehyde (10 min) and incubated in 1x PBS / 10% normal goat serum / 0.3M glycine to block non-specific protein-protein interactions. The cells were then incubated with the antibody (ab94582, 1µg/1x10<sup>6</sup> cells) for 30 min at 22°C. The secondary antibody used was Alexa Fluor® 488 goat anti-mouse IgG (H+L) (**ab150113**) at 1/2000 dilution for 30 min at 22°C. Isotype control antibody (black line) was mouse IgG2a [ICIGG2A] (**ab91361**, 1µg/1x10<sup>6</sup> cells) used under the same conditions. Unlabelled sample (blue line) was also used as a control. Acquisition of >5,000 events were collected using a 20mW Argon ion laser (488nm) and 525/30 bandpass filter. This antibody gave a positive result in 80% methanol (5 min) fixed SH-SY5Y cells used under the same conditions. Please note that Abcam do not have any data for use of this antibody on non-fixed cells. We welcome any customer feedback.

**Please note:** All products are "FOR RESEARCH USE ONLY. NOT FOR USE IN DIAGNOSTIC PROCEDURES"

### Our Abpromise to you: Quality guaranteed and expert technical support

- Replacement or refund for products not performing as stated on the datasheet
- Valid for 12 months from date of delivery
- Response to your inquiry within 24 hours
- We provide support in Chinese, English, French, German, Japanese and Spanish
- Extensive multi-media technical resources to help you
- We investigate all quality concerns to ensure our products perform to the highest standards

If the product does not perform as described on this datasheet, we will offer a refund or replacement. For full details of the Abpromise, please visit <https://www.abcam.cn/abpromise> or contact our technical team.

## Terms and conditions

---

- Guarantee only valid for products bought direct from Abcam or one of our authorized distributors