




Anti-Triosephosphate isomerase antibody ab28760

★★★★★ [2 Abreviews](#) [12 References](#) [4 图像](#)

概述

产品名称	Anti-Triosephosphate isomerase抗体
描述	山羊多克隆抗体to Triosephosphate isomerase
宿主	Goat
特异性	This antibody is expected to recognise both reported isoforms.
经测试应用	适用于: Flow Cyt, WB, IHC-P
种属反应性	与反应: Mouse, Dog, Human 预测可用于: Rat, Cow 
免疫原	Synthetic peptide: C-LKPE FVDIINAKQ , corresponding to C terminal amino acids 237-249 of Human Triosephosphate isomerase, according to NP_000356. <div>  Run BLAST with  Run BLAST with </div>
阳性对照	WB: HEK293, HeLa, Jurkat, HepG2, RAW264.7, KNRK and MDCK cell lysates. IHC-P: Human liver tissue. Flow Cyt: HeLa cells.
常规说明	<p>The Life Science industry has been in the grips of a reproducibility crisis for a number of years. Abcam is leading the way in addressing this with our range of recombinant monoclonal antibodies and knockout edited cell lines for gold-standard validation. Please check that this product meets your needs before purchasing.</p> <p>If you have any questions, special requirements or concerns, please send us an inquiry and/or contact our Support team ahead of purchase. Recommended alternatives for this product can be found below, along with publications, customer reviews and Q&As</p>

性能

形式	Liquid
存放说明	Shipped at 4°C. Upon delivery aliquot and store at -20°C. Avoid freeze / thaw cycles.
存储溶液	pH: 7.30 Preservative: 0.02% Sodium azide Constituents: 0.5% Tris buffered saline, 0.5% BSA
纯度	Immunogen affinity purified

纯化说明	This antibody was purified from goat serum by ammonium sulphate precipitation, followed by antigen affinity chromatography using the immunizing peptide.
克隆	多克隆
同种型	IgG

应用

The Abpromise guarantee **Abpromise™**承诺保证使用ab28760于以下的经测试应用

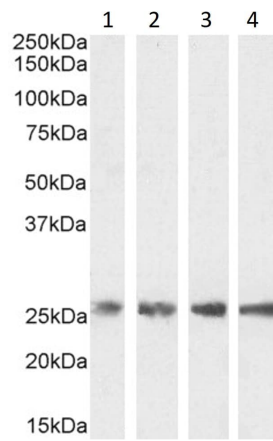
“应用说明”部分 下显示的仅为推荐的起始稀释度;实际最佳的稀释度/浓度应由使用者检定。

应用	Ab评论	说明
Flow Cyt		Use a concentration of 10 µg/ml.
WB	★★★★★ (2)	Use a concentration of 0.001 - 0.01 µg/ml. Detects a band of approximately 26 kDa (predicted molecular weight: 26 kDa). 1 hour primary incubation is recommended for this product.
IHC-P		Use a concentration of 2 - 5 µg/ml. Perform heat mediated antigen retrieval with Tris/EDTA buffer pH 9.0 before commencing with IHC staining protocol.

靶标

相关性	<p>Triosephosphate isomerase (TIM) catalyses the reversible interconversion of G3P and DHAP. Only G3P can be used in glycolysis, therefore TIM is essential for energy production, allowing two molecules of G3P to be produced for every glucose molecule, thereby doubling the energy yield. Defects in TPI1 are the cause of triosephosphate isomerase deficiency (TPI deficiency) [MIM:190450]. TPI deficiency is an autosomal recessive disorder. It is the most severe clinical disorder of glycolysis. It is associated with neonatal jaundice, chronic hemolytic anemia, progressive neuromuscular dysfunction, cardiomyopathy and increased susceptibility to infection.</p>
细胞定位	Cytoplasmic and Nuclear; extracellular vesicle exosome; extracellular space.

图片



Western blot - Anti-Triosephosphate isomerase antibody (ab28760)

All lanes : Anti-Triosephosphate isomerase antibody (ab28760) at 0.001 µg/ml

Lane 1 : HepG2 cell lysate

Lane 2 : HEK293 cell lysate

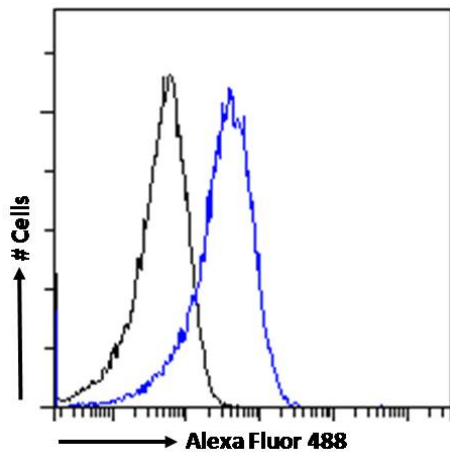
Lane 3 : HeLa cell lysate

Lane 4 : Jurkat cell lysate in RIPA buffer

Lysates/proteins at 35 µg per lane.

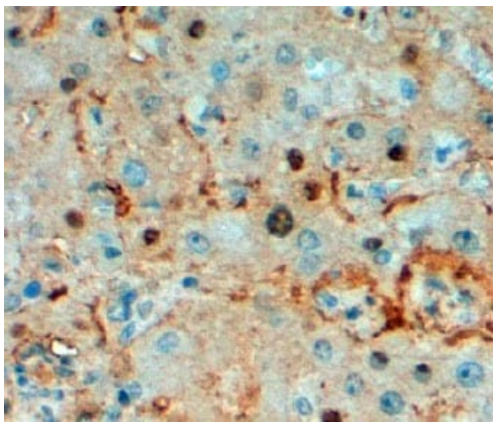
Predicted band size: 26 kDa

Detected by chemiluminescence.



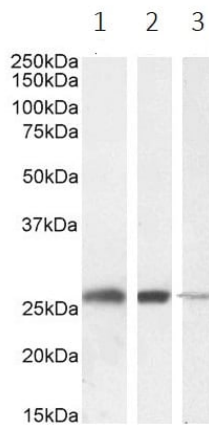
Flow Cytometry - Anti-Triosephosphate isomerase antibody (ab28760)

Flow cytometric analysis of paraformaldehyde fixed HeLa cells (blue line), permeabilized with 0.5% Triton. Primary incubation 1hr (10µg/mL) followed by Alexa Fluor 488 secondary antibody (1µg/mL). IgG control: Unimmunized goat IgG (black line) followed by Alexa Fluor 488 secondary antibody.



Immunohistochemistry (Formalin/PFA-fixed paraffin-embedded sections) - Anti-Triosephosphate isomerase antibody (ab28760)

Immunohistochemical analysis of formalin-fixed, paraffin-embedded Human liver tissue, staining Triosephosphate isomerase with ab28760 at 2 µg/mL. Antigen retrieval was performed by heat mediation in a Tris/EDTA buffer (pH 9).



Western blot - Anti-Triosephosphate isomerase antibody (ab28760)

All lanes : Anti-Triosephosphate isomerase antibody (ab28760) at 0.001 µg/ml

Lane 1 : RAW264.7 cell lysate

Lane 2 : KNRK cell lysate

Lane 3 : MDCK cell lysate

Lysates/proteins at 35 µg per lane.

Predicted band size: 26 kDa

Detected by chemiluminescence.

Please note: All products are "FOR RESEARCH USE ONLY. NOT FOR USE IN DIAGNOSTIC PROCEDURES"

Our Abpromise to you: Quality guaranteed and expert technical support

- Replacement or refund for products not performing as stated on the datasheet
- Valid for 12 months from date of delivery
- Response to your inquiry within 24 hours
- We provide support in Chinese, English, French, German, Japanese and Spanish
- Extensive multi-media technical resources to help you
- We investigate all quality concerns to ensure our products perform to the highest standards

If the product does not perform as described on this datasheet, we will offer a refund or replacement. For full details of the Abpromise, please visit <https://www.abcam.cn/abpromise> or contact our technical team.

Terms and conditions

- Guarantee only valid for products bought direct from Abcam or one of our authorized distributors