

Anti-TRIM21/SS-A antibody ab91423

3 References **2 图像**

概述

产品名称	Anti-TRIM21/SS-A抗体
描述	兔多克隆抗体to TRIM21/SS-A
宿主	Rabbit
经测试应用	适用于: ICC/IF, WB, IP
种属反应性	与反应: Human 预测可用于: Chimpanzee, Rhesus monkey, Gorilla 
免疫原	Synthetic peptide corresponding to Human TRIM21/SS-A aa 425-475 (C terminal). Sequence: DHGSLIYSFSECAFTGPLRPFFSPGFNDGGKNTAPLTLCLN IGSQGSTD Y Database link: NP_003132.2  Run BLAST with  Run BLAST with

常规说明

The Life Science industry has been in the grips of a reproducibility crisis for a number of years. Abcam is leading the way in addressing this with our range of recombinant monoclonal antibodies and knockout edited cell lines for gold-standard validation. Please check that this product meets your needs before purchasing.

If you have any questions, special requirements or concerns, please send us an inquiry and/or contact our Support team ahead of purchase. Recommended alternatives for this product can be found below, along with publications, customer reviews and Q&As

性能

形式	Liquid
存放说明	Shipped at 4°C. Upon delivery aliquot and store at -20°C. Avoid freeze / thaw cycles.
存储溶液	pH: 6.8 Preservative: 0.09% Sodium azide Constituents: Tris buffered saline, 0.1% BSA
纯度	Immunogen affinity purified
克隆	多克隆
同种型	IgG

应用

The Abpromise guarantee **Abpromise™**承诺保证使用ab91423于以下的经测试应用

“应用说明”部分 下显示的仅为推荐的起始稀释度;实际最佳的稀释度/浓度应由使用者检定。

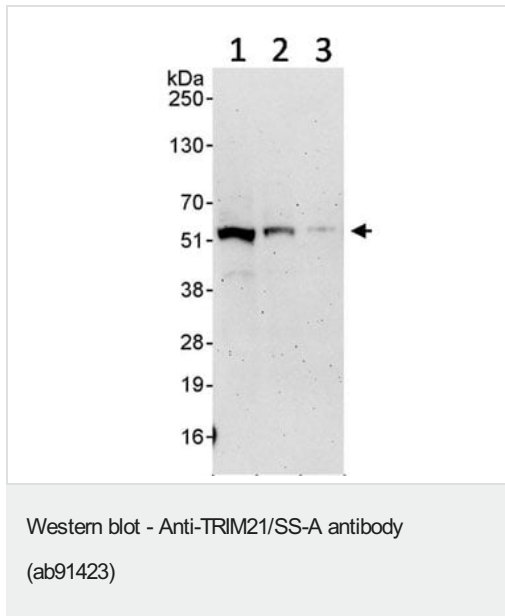
应用	Ab评论	说明
ICC/IF		Use at an assay dependent concentration.
WB		1/2000 - 1/10000. Predicted molecular weight: 54 kDa.
IP		Use at 5-15 µg/mg of lysate.

靶标

功能	E3 ubiquitin-protein ligase whose activity is dependent on E2 enzymes, UBE2D1, UBE2D2, UBE2E1 and UBE2E2. Forms a ubiquitin ligase complex in cooperation with the E2 UBE2D2 that is used not only for the ubiquitination of USP4 and IKBKB but also for its self-ubiquitination. Component of cullin-RING-based SCF (SKP1-CUL1-F-box protein) E3 ubiquitin-protein ligase complexes such as SCF(SKP2)-like complexes. A TRIM21-containing SCF(SKP2)-like complex is shown to mediate ubiquitination of CDKN1B ("Thr-187" phosphorylated-form), thereby promoting its degradation by the proteasome. Monoubiquitinates IKBKB that will negatively regulates Tax-induced NF-kappa-B signaling. Negatively regulates IFN-beta production post-pathogen recognition by polyubiquitin-mediated degradation of IRF3. Mediates the ubiquitin-mediated proteasomal degradation of IgG1 heavy chain, which is linked to the VCP-mediated ER-associated degradation (ERAD) pathway. Promotes IRF8 ubiquitination, which enhanced the ability of IRF8 to stimulate cytokine genes transcription in macrophages. Plays a role in the regulation of the cell cycle progression. Enhances the decapping activity of DCP2. Exists as a ribonucleoprotein particle present in all mammalian cells studied and composed of a single polypeptide and one of four small RNA molecules. At least two isoforms are present in nucleated and red blood cells, and tissue specific differences in RO/SSA proteins have been identified. The common feature of these proteins is their ability to bind HY RNAs.2.
组织特异性	Isoforms 1 and 2 are expressed in fetal and adult heart and fetal lung.
通路	Protein modification; protein ubiquitination.
序列相似性	Belongs to the TRIM/RBCC family. Contains 1 B box-type zinc finger. Contains 1 B30.2/SPRY domain. Contains 1 RING-type zinc finger.
结构域	The coiled-coil is necessary for the cytoplasmic localization. The B30.2/SPRY domain is necessary for the cytoplasmic localization, the interaction with IRF3 and for the IRF3-driven interferon beta promoter activity. The RING-type zinc finger is necessary for ubiquitination and for the IRF3-driven interferon beta promoter activity. Interacts with SKP2 and CUL1 in a RING finger-independent manner.
翻译后修饰	Autoubiquitinated; does not lead to its proteasomal degradation. Deubiquitinated by USP4; leading to its stabilization.
细胞定位	Cytoplasm. Nucleus. Cytoplasm > P-body. Enters the nucleus upon exposure to nitric oxide.

Localizes to small dot- or rod-like structures in the cytoplasm, called cytoplasmic bodies (P-body) that are located underneath the plasma membrane and also diffusely in the cytoplasm and are highly motile in cells. Cytoplasmic bodies are located along the microtubules and do not share the same cytoplasmic bodies with TRIM5. Colocalizes with DCP2 in P-body.

图片



All lanes : Anti-TRIM21/SS-A antibody (ab91423) at 0.04 µg/ml

Lane 1 : HeLa whole cell lysate at 50 µg

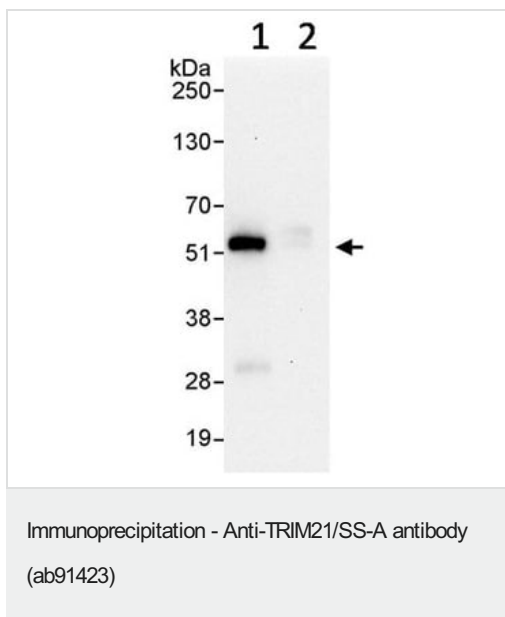
Lane 2 : HeLa whole cell lysate at 15 µg

Lane 3 : HeLa whole cell lysate at 5 µg

Developed using the ECL technique.

Predicted band size: 54 kDa

Exposure time: 3 minutes



SSA1 was immunoprecipitated from 1mg HeLa whole cell lysate using 10µg ab91423.

20% of the immunoprecipitate was loaded per lane, and probed with ab91423 at 1µg/ml (lane 1) or a control IgG (lane2).

Detection: chemoluminescence with an exposure time of 10 seconds.

Please note: All products are "FOR RESEARCH USE ONLY. NOT FOR USE IN DIAGNOSTIC PROCEDURES"

Our Abpromise to you: Quality guaranteed and expert technical support

- Replacement or refund for products not performing as stated on the datasheet
- Valid for 12 months from date of delivery
- Response to your inquiry within 24 hours

- We provide support in Chinese, English, French, German, Japanese and Spanish
- Extensive multi-media technical resources to help you
- We investigate all quality concerns to ensure our products perform to the highest standards

If the product does not perform as described on this datasheet, we will offer a refund or replacement. For full details of the Abpromise, please visit <https://www.abcam.cn/abpromise> or contact our technical team.

Terms and conditions

- Guarantee only valid for products bought direct from Abcam or one of our authorized distributors