

### Anti-TRIC-B antibody ab106401

#### 1 图像

#### 概述

产品名称	Anti-TRIC-B抗体
描述	兔多克隆抗体to TRIC-B
宿主	Rabbit
特异性	ab106401 will not cross-react with TMEM38A.
经测试应用	适用于: WB
种属反应性	与反应: Rat
免疫原	Synthetic peptide corresponding to Human TRIC-B (C terminal). Database link: <a href="#">NP_060582</a>
阳性对照	WB: Rat thymus tissue lysate.
常规说明	<p>The Life Science industry has been in the grips of a reproducibility crisis for a number of years. Abcam is leading the way in addressing this with our range of recombinant monoclonal antibodies and knockout edited cell lines for gold-standard validation. Please check that this product meets your needs before purchasing.</p> <p>If you have any questions, special requirements or concerns, please send us an inquiry and/or contact our Support team ahead of purchase. Recommended alternatives for this product can be found below, along with publications, customer reviews and Q&amp;As</p>

#### 性能

形式	Liquid
存放说明	Shipped at 4°C. Store at +4°C.
存储溶液	pH: 7.2 Preservative: 0.02% Sodium azide Constituent: PBS
纯度	Immunogen affinity purified
克隆	多克隆
同种型	IgG

#### 应用

## The Abpromise guarantee

**Abpromise™** 承诺保证使用 ab106401 于以下的经测试应用

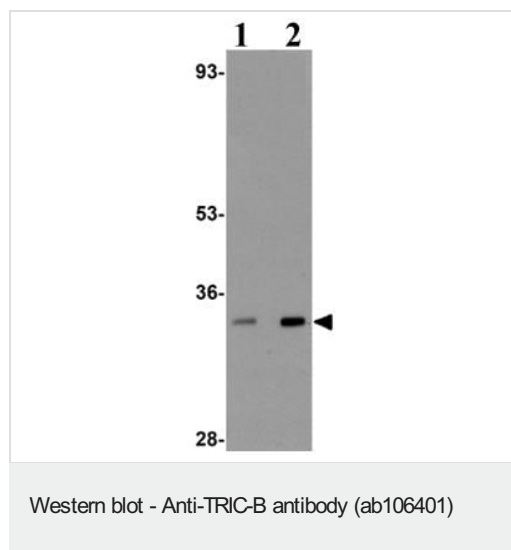
“应用说明”部分 下显示的仅为推荐的起始稀释度；实际最佳的稀释度/浓度应由使用者检定。

应用	Ab 评论	说明
WB		Use a concentration of 1 - 2 µg/ml. Predicted molecular weight: 33 kDa.

## 靶标

功能	Monovalent cation channel required for maintenance of rapid intracellular calcium release. May act as a potassium counter-ion channel that functions in synchronization with calcium release from intracellular stores.
序列相似性	Belongs to the TMEM38 family.
结构域	The second transmembrane domain has been proposed to cross only half of the lipid bilayer and to loop back into the cytosol, so that the domains on each side of this domain are both found on the cytosolic face of the membrane. The cytosolic loop may form an ion-conducting pore.
细胞定位	Endoplasmic reticulum membrane.

## 图片



**Lane 1 :** Anti-TRIC-B antibody (ab106401) at 1 µg/ml

**Lane 2 :** Anti-TRIC-B antibody (ab106401) at 2 µg/ml

**All lanes :** Rat thymus tissue lysate

Lysates/proteins at 15 µg per lane.

**Predicted band size:** 33 kDa

**Please note:** All products are "FOR RESEARCH USE ONLY. NOT FOR USE IN DIAGNOSTIC PROCEDURES"

## Our Abpromise to you: Quality guaranteed and expert technical support

- Replacement or refund for products not performing as stated on the datasheet
- Valid for 12 months from date of delivery
- Response to your inquiry within 24 hours
- We provide support in Chinese, English, French, German, Japanese and Spanish
- Extensive multi-media technical resources to help you

- We investigate all quality concerns to ensure our products perform to the highest standards

If the product does not perform as described on this datasheet, we will offer a refund or replacement. For full details of the Abpromise, please visit <https://www.abcam.cn/abpromise> or contact our technical team.

## Terms and conditions

---

- Guarantee only valid for products bought direct from Abcam or one of our authorized distributors