

Anti-TRF2 antibody [EPR3517(2)] ab108997

重组 RabMAb

12 References **8 图像**

概述

产品名称	Anti-TRF2抗体[EPR3517(2)]
描述	兔单克隆抗体[EPR3517(2)] to TRF2
宿主	Rabbit
经测试应用	适用于: Flow Cyt (Intra), WB, IHC-P, ICC/IF 不适用于: IP
种属反应性	与反应: Human
免疫原	Synthetic peptide. This information is proprietary to Abcam and/or its suppliers.
阳性对照	WB: HT-29, HeLa, and Jurkat whole cell lysate (ab7899); ICC/IF: HeLa and Jurkat cells. IHC-P: Human tonsil and spleen tissue. Flow Cyt (intra): HeLa cells.
常规说明	<p>This product is a recombinant monoclonal antibody, which offers several advantages including:</p> <ul style="list-style-type: none"> - High batch-to-batch consistency and reproducibility - Improved sensitivity and specificity - Long-term security of supply - Animal-free production <p>For more information see here.</p> <p>Our RabMAb[®] technology is a patented hybridoma-based technology for making rabbit monoclonal antibodies. For details on our patents, please refer to RabMAb[®] patents.</p> <p>Mouse, Rat: We have preliminary internal testing data to indicate this antibody may not react with these species. Please contact us for more information.</p>

性能

形式	Liquid
存放说明	Shipped at 4°C. Store at +4°C short term (1-2 weeks). Upon delivery aliquot. Store at -20°C. Stable for 12 months at -20°C.
存储溶液	pH: 7.20 Preservative: 0.01% Sodium azide Constituents: 59% PBS, 40% Glycerol (glycerin, glycerine), 0.05% BSA
纯度	Protein A purified

克隆	单克隆
克隆编号	EPR3517(2)
同种型	IgG

应用

The Abpromise guarantee

Abpromise™承诺保证使用ab108997于以下的经测试应用

“应用说明”部分 下显示的仅为推荐的起始稀释度;实际最佳的稀释度/浓度应由使用者检定。

应用	Ab评论	说明
Flow Cyt (Intra)		1/300.
WB		1/1000 - 1/10000. Predicted molecular weight: 56 kDa.
IHC-P		1/1000. Perform heat mediated antigen retrieval with Tris/EDTA buffer pH 9.0 before commencing with IHC staining protocol. See IHC antigen retrieval protocols . For unpurified use at 1/250 - 1/500.
ICC/IF		1/300. For unpurified use at 1/100 - 1/250.

应用说明

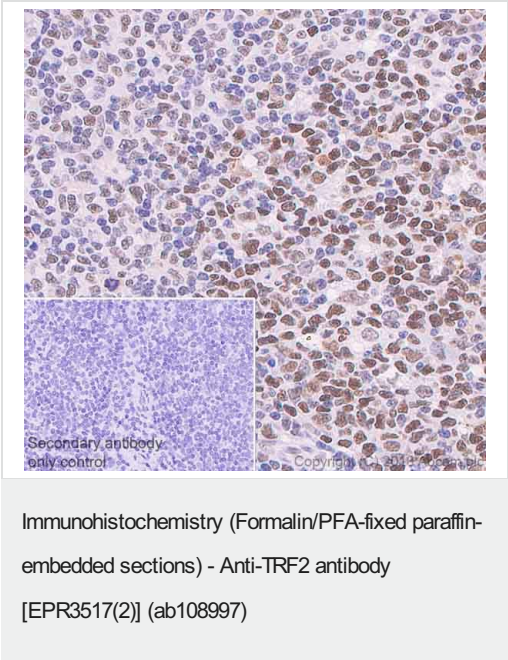
Is unsuitable for IP.

靶标

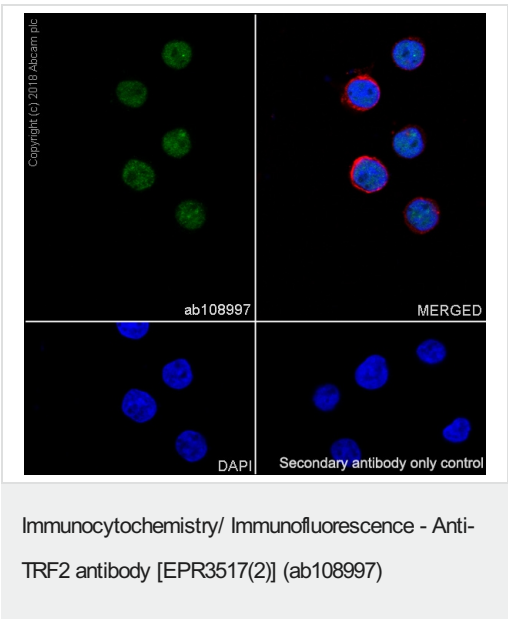
功能	<p>Binds the telomeric double-stranded 5'-TTAGGG-3' repeat and plays a central role in telomere maintenance and protection against end-to-end fusion of chromosomes. In addition to its telomeric DNA-binding role, required to recruit a number of factors and enzymes required for telomere protection, including the shelterin complex, TERF2IP/RAP1 and DCLRE1B/Apollo. Component of the shelterin complex (telosome) that is involved in the regulation of telomere length and protection. Shelterin associates with arrays of double-stranded 5'-TTAGGG-3' repeats added by telomerase and protects chromosome ends; without its protective activity, telomeres are no longer hidden from the DNA damage surveillance and chromosome ends are inappropriately processed by DNA repair pathways. Together with DCLRE1B/Apollo, plays a key role in telomeric loop (T loop) formation by generating 3' single-stranded overhang at the leading end telomeres: T loops have been proposed to protect chromosome ends from degradation and repair. Required both to recruit DCLRE1B/Apollo to telomeres and activate the exonuclease activity of DCLRE1B/Apollo. Preferentially binds to positive supercoiled DNA. Together with DCLRE1B/Apollo, required to control the amount of DNA topoisomerase (TOP1, TOP2A and TOP2B) needed for telomere replication during fork passage and prevent aberrant telomere topology. Recruits TERF2IP/RAP1 to telomeres, thereby participating in to repressing homology-directed repair (HDR), which can affect telomere length.</p>
组织特异性	Ubiquitous. Highly expressed in spleen, thymus, prostate, uterus, testis, small intestine, colon and peripheral blood leukocytes.
序列相似性	Contains 1 HTH myb-type DNA-binding domain.
结构域	The TRFH dimerization region mediates the interaction with DCLRE1B/Apollo but not TINF2.
翻译后修饰	Phosphorylated upon DNA damage, probably by ATM or ATR.

细胞定位	Nucleus. Chromosome > telomere. Colocalizes with telomeric DNA in interphase cells and is located at chromosome ends during metaphase.
------	--

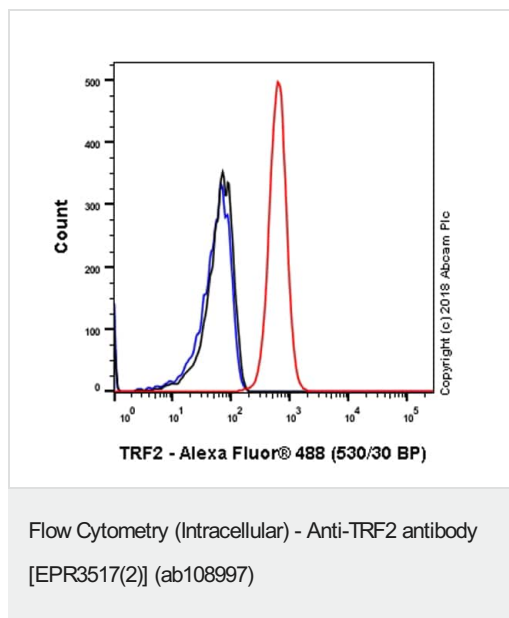
图片



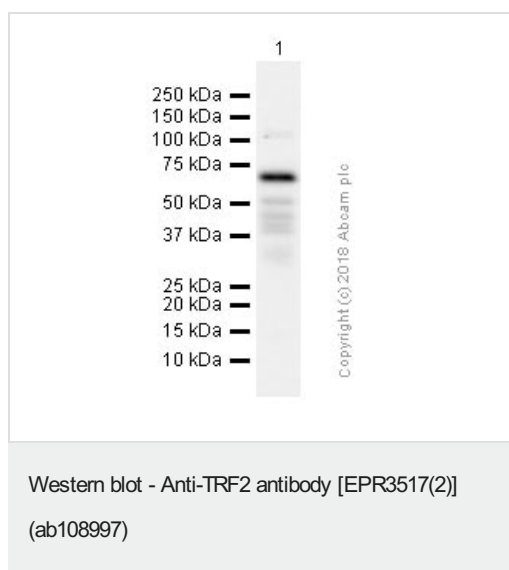
Immunohistochemistry (Formalin/PFA-fixed paraffin-embedded sections) analysis of Human tonsil tissue sections labeling TRF2 with Purified ab108997 at 1:1000 dilution (3.4 µg/ml). Heat mediated antigen retrieval was performed using **ab93684** (Tris/EDTA buffer, pH 9.0). ImmunoHistoProbe one step HRP Polymer (ready to use)was used as the secondary antibody. Negative control:PBS instead of the primary antibody. Hematoxylin was used as a counterstain.



Immunocytochemistry/ Immunofluorescence analysis of Jurkat (Human T cell leukemia T lymphocyte) cells labeling TRF2 with Purified ab108997 at 1:300 dilution (10 µg/ml). Cells were fixed in 4% Paraformaldehyde and permeabilized with 0.1% tritonX-100. Cells were counterstained with Ab195889 Anti-alpha Tubulin antibody [DM1A] - Microtubule Marker (Alexa Fluor® 594) 1:200 (2.5 µg/ml). Goat anti rabbit IgG (Alexa Fluor® 488, **ab150077**) was used as the secondary antibody at 1:1000 (2 µg/ml) dilution. DAPI nuclear counterstain. PBS instead of the primary antibody was used as the secondary antibody only control.



Intracellular Flow Cytometry analysis of HeLa (Human cervix adenocarcinoma epithelial cell) cells labeling TRF2 with Purified ab108997 at 1/300 dilution (10µg/ml) (red). Cells were fixed with 4% Paraformaldehyde. A Goat anti rabbit IgG (Alexa Fluor® 488, **ab150077**) secondary antibody was used at 1/2000. Isotype control - Rabbit monoclonal IgG (Black). Unlabeled control - Cell without incubation with primary antibody and secondary antibody (Blue).



Anti-TRF2 antibody [EPR3517(2)] (ab108997) at 1/1000 dilution + HT-29 (Human colorectal adenocarcinoma epithelial cell) whole cell lysate at 15 µg

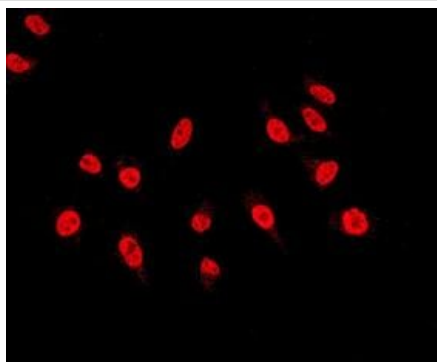
Secondary

Goat Anti-Rabbit IgG H&L (HRP) (**ab97051**) at 1/20000 dilution

Predicted band size: 56 kDa

Observed band size: 62 kDa

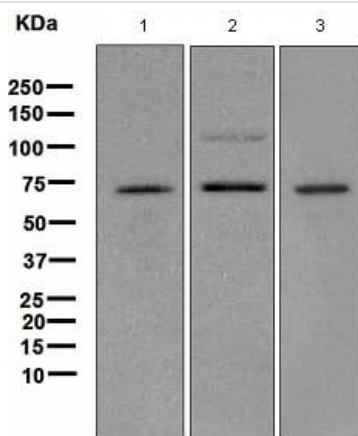
Blocking and dilution buffer: 5%NFDM/TBST



Immunocytochemistry/ Immunofluorescence - Anti-TRF2 antibody [EPR3517(2)] (ab108997)

ab108997 at 1/100 dilution staining TRF2 in HeLa cells by Immunofluorescence.

This image was generated using the unpurified version of the product.



Western blot - Anti-TRF2 antibody [EPR3517(2)] (ab108997)

All lanes : Anti-TRF2 antibody [EPR3517(2)] (ab108997) at 1/1000 dilution

Lane 1 : HT29 cell lysate

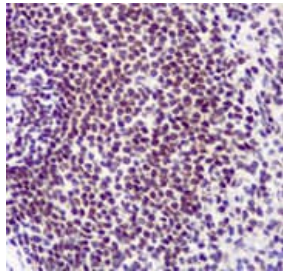
Lane 2 : HeLa cell lysate

Lane 3 : Jurkat cell lysate

Lysates/proteins at 10 µg per lane.

Predicted band size: 56 kDa

This image was generated using the unpurified version of the product.



ab108997 at 1/250 dilution staining TRF2 in Human spleen by Immunohistochemistry, Paraffin-embedded tissue.

This image was generated using the unpurified version of the product.

Immunohistochemistry (Formalin/PFA-fixed paraffin-embedded sections) - Anti-TRF2 antibody [EPR3517(2)] (ab108997)

Why choose a recombinant antibody?



Research with confidence
Consistent and reproducible results



Long-term and scalable supply
Recombinant technology



Success from the first experiment
Confirmed specificity



Ethical standards compliant
Animal-free production

Anti-TRF2 antibody [EPR3517(2)] (ab108997)

Please note: All products are "FOR RESEARCH USE ONLY. NOT FOR USE IN DIAGNOSTIC PROCEDURES"

Our Abpromise to you: Quality guaranteed and expert technical support

- Replacement or refund for products not performing as stated on the datasheet
- Valid for 12 months from date of delivery
- Response to your inquiry within 24 hours
- We provide support in Chinese, English, French, German, Japanese and Spanish
- Extensive multi-media technical resources to help you
- We investigate all quality concerns to ensure our products perform to the highest standards

If the product does not perform as described on this datasheet, we will offer a refund or replacement. For full details of the Abpromise, please visit <https://www.abcam.cn/abpromise> or contact our technical team.

Terms and conditions

- Guarantee only valid for products bought direct from Abcam or one of our authorized distributors