


Anti-TRAPPC2 antibody [EPR3401] ab111848

重组 RabMAb

1 References 2 图像

概述	
产品名称	Anti-TRAPPC2抗体[EPR3401]
描述	兔单克隆抗体[EPR3401] to TRAPPC2
宿主	Rabbit
经测试应用	适用于: WB 不适用于: Flow Cyt, ICC/IF, IHC-P or IP
种属反应性	与反应: Human 预测可用于: Mouse, Rat 
免疫原	Synthetic peptide. This information is proprietary to Abcam and/or its suppliers.
阳性对照	Human spleen, Raji, and Daudi cell lysates.
常规说明	<p>This product is a recombinant monoclonal antibody, which offers several advantages including:</p> <ul style="list-style-type: none">- High batch-to-batch consistency and reproducibility- Improved sensitivity and specificity- Long-term security of supply- Animal-free production <p>For more information see here.</p> <p>Our RabMAb[®] technology is a patented hybridoma-based technology for making rabbit monoclonal antibodies. For details on our patents, please refer to RabMAb[®] patents.</p>
性能	
形式	Liquid
存放说明	Shipped at 4°C. Store at -20°C. Stable for 12 months at -20°C.
存储溶液	pH: 7.20 Preservative: 0.05% Sodium azide Constituents: 0.1% BSA, 40% Glycerol (glycerin, glycerine), 9.85% Tris glycine, 50% Tissue culture supernatant
纯度	Protein A purified
克隆	单克隆
克隆编号	EPR3401

同种型IgG

应用

The Abpromise guarantee **Abpromise™**承诺保证使用ab111848于以下的经测试应用
“应用说明”部分 下显示的仅为推荐的起始稀释度;实际最佳的稀释度/浓度应由使用者检定。

应用	Ab评论	说明
WB		1/1000 - 1/10000. Predicted molecular weight: 16 kDa.

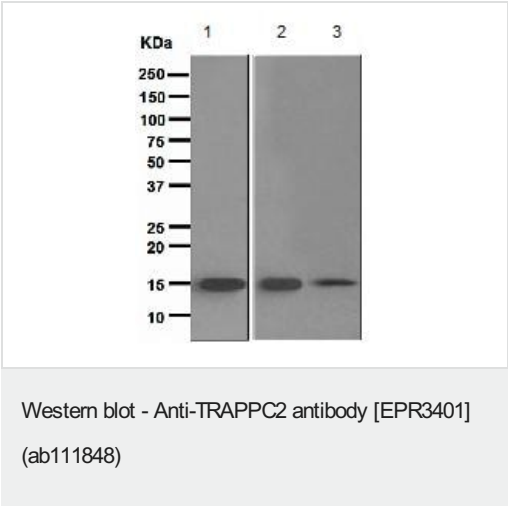
应用说明 Is unsuitable for Flow Cyt, ICC/IF, IHC-P or IP.

靶标

相关性 Function: Prevents MBP1-mediated transcriptional repression and antagonizes MBP1-mediated cell death. May play a role in vesicular transport from endoplasmic reticulum to Golgi. Tissue specificity: Widely expressed. Disease: Defects in TRAPPC2 are the cause of spondyloepiphyseal dysplasia tarda (SED) [MIM:313400]. SED is an X-linked recessive disorder of endochondral bone formation. Similarity: Belongs to the TRAPP small subunits family. Sedlin subfamily.

细胞定位 Cytoplasm > perinuclear region. Endoplasmic reticulum. Golgi apparatus. Localized in perinuclear granular structures.

图片



All lanes : Anti-TRAPPC2 antibody [EPR3401] (ab111848) at 1/1000 dilution

- Lane 1 :** Human spleen cell lysate
- Lane 2 :** Raji cell lysate
- Lane 3 :** Daudi cell lysate

Lysates/proteins at 10 µg per lane.

Predicted band size: 16 kDa

Why choose a recombinant antibody?



Research with confidence
Consistent and reproducible results



Long-term and scalable supply
Recombinant technology



Success from the first experiment
Confirmed specificity



Ethical standards compliant
Animal-free production

Anti-TRAPPC2 antibody [EPR3401] (ab111848)

Please note: All products are "FOR RESEARCH USE ONLY. NOT FOR USE IN DIAGNOSTIC PROCEDURES"

Our Abpromise to you: Quality guaranteed and expert technical support

- Replacement or refund for products not performing as stated on the datasheet
- Valid for 12 months from date of delivery
- Response to your inquiry within 24 hours
- We provide support in Chinese, English, French, German, Japanese and Spanish
- Extensive multi-media technical resources to help you
- We investigate all quality concerns to ensure our products perform to the highest standards

If the product does not perform as described on this datasheet, we will offer a refund or replacement. For full details of the Abpromise, please visit <https://www.abcam.cn/abpromise> or contact our technical team.

Terms and conditions

- Guarantee only valid for products bought direct from Abcam or one of our authorized distributors