

Anti-TRAP220/MED1 (phospho T1457) antibody ab60950

★★★★★ [2 Abreviews](#) [9 References](#) [3 图像](#)

概述

产品名称	Anti-TRAP220/MED1 (phospho T1457)抗体
描述	兔多克隆抗体to TRAP220/MED1 (phospho T1457)
宿主	Rabbit
经测试应用	适用于: ELISA, ICC/IF, ChIP, IHC-P, WB
种属反应性	与反应: Mouse, Human, African green monkey
免疫原	Synthetic peptide corresponding to Human TRAP220/MED1 (phospho T1457). Synthetic phosphopeptide derived from human TRAP220/MED1 around the phosphorylation site of threonine 1457 (A-Y-TP-P-Q).
常规说明	<p>The Life Science industry has been in the grips of a reproducibility crisis for a number of years. Abcam is leading the way in addressing this with our range of recombinant monoclonal antibodies and knockout edited cell lines for gold-standard validation. Please check that this product meets your needs before purchasing.</p> <p>If you have any questions, special requirements or concerns, please send us an inquiry and/or contact our Support team ahead of purchase. Recommended alternatives for this product can be found below, along with publications, customer reviews and Q&As</p>

性能

形式	Liquid
存放说明	Shipped at 4°C. Store at +4°C short term (1-2 weeks). Upon delivery aliquot. Store at -20°C. Avoid freeze / thaw cycle.
存储溶液	pH: 7.40 Preservative: 0.02% Sodium azide Constituents: PBS, 50% Glycerol (glycerin, glycerine), 0.87% Sodium chloride Without Mg ²⁺ and Ca ²⁺
纯度	Immunogen affinity purified
纯化说明	ab60950 was affinity-purified from rabbit antiserum by affinity-chromatography using epitope-specific phosphopeptide. The antibody against non-phosphopeptide was removed by chromatography using non-phosphopeptide corresponding to the phosphorylation site.
克隆	多克隆

同种型

IgG

应用

The Abpromise guarantee **Abpromise™** 承诺保证使用ab60950于以下的经测试应用

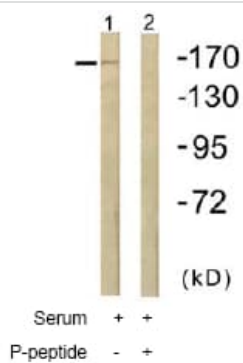
“应用说明”部分 下显示的仅为推荐的起始稀释度;实际最佳的稀释度/浓度应由使用者检定。

应用	Ab评论	说明
ELISA		Use at an assay dependent concentration.
ICC/IF	★★★★★ (2)	1/500 - 1/1000.
ChIP		Use at an assay dependent concentration. PubMed: 19122196
IHC-P		1/50 - 1/100.
WB		1/500 - 1/1000. Detects a band of approximately 170 kDa (predicted molecular weight: 180 kDa).

靶标

功能	Component of the Mediator complex, a coactivator involved in the regulated transcription of nearly all RNA polymerase II-dependent genes. Mediator functions as a bridge to convey information from gene-specific regulatory proteins to the basal RNA polymerase II transcription machinery. Mediator is recruited to promoters by direct interactions with regulatory proteins and serves as a scaffold for the assembly of a functional preinitiation complex with RNA polymerase II and the general transcription factors.
组织特异性	Ubiquitously expressed.
序列相似性	Belongs to the Mediator complex subunit 1 family.
翻译后修饰	Phosphorylated by MAPK1 or MAPK3 during G2/M phase which may enhance protein stability and promote entry into the nucleolus. Phosphorylated upon DNA damage, probably by ATM or ATR.
细胞定位	Nucleus. A subset of the protein may enter the nucleolus subsequent to phosphorylation by MAPK1 or MAPK3.

图片



Western blot - Anti-TRAP220/MED1 (phospho T1457) antibody (ab60950)

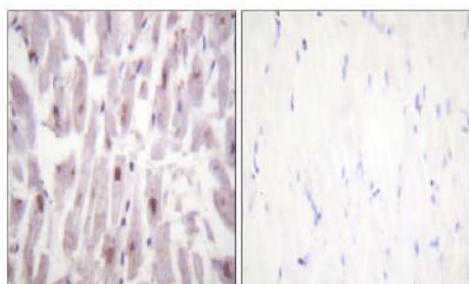
All lanes : Anti-TRAP220/MED1 (phospho T1457) antibody (ab60950) at 1/500 dilution

Lane 1 : HuvEc cell extracts treated with Serum (20%, 30mins)

Lane 2 : HuvEc cell extracts treated with Serum (20%, 30mins) with immunising peptide

Predicted band size: 180 kDa

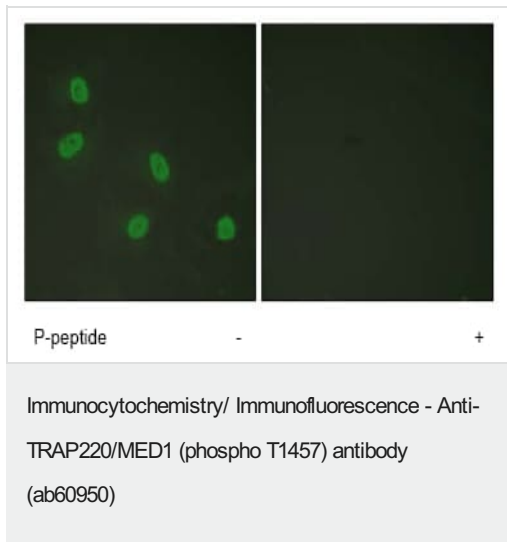
Observed band size: 170 kDa



P-peptide - +

Immunohistochemistry (Formalin/PFA-fixed paraffin-embedded sections) - Anti-TRAP220/MED1 (phospho T1457) antibody (ab60950)

ab60950 at 1/50 - 1/100 dilution staining TRAP220/MED1 in human heart by Immunohistochemistry, Paraffin embedded tissue, in the absence or presence of the immunising peptide



ab60950 at 1/500 - 1/1000 dilution staining TRAP220/MED1 in HeLa cells by Immunofluorescence.

Please note: All products are "FOR RESEARCH USE ONLY. NOT FOR USE IN DIAGNOSTIC PROCEDURES"

Our Abpromise to you: Quality guaranteed and expert technical support

- Replacement or refund for products not performing as stated on the datasheet
- Valid for 12 months from date of delivery
- Response to your inquiry within 24 hours
- We provide support in Chinese, English, French, German, Japanese and Spanish
- Extensive multi-media technical resources to help you
- We investigate all quality concerns to ensure our products perform to the highest standards

If the product does not perform as described on this datasheet, we will offer a refund or replacement. For full details of the Abpromise, please visit <https://www.abcam.cn/abpromise> or contact our technical team.

Terms and conditions

- Guarantee only valid for products bought direct from Abcam or one of our authorized distributors