

# Anti-TRAP220/MED1 antibody ab64965

★★★★★ [6 Abreviews](#) [25 References](#) [4 图像](#)

### 概述

产品名称	Anti-TRAP220/MED1抗体
描述	兔多克隆抗体to TRAP220/MED1
宿主	Rabbit
经测试应用	适用于: ELISA, IP, IHC-P, WB
种属反应性	与反应: Mouse, Human
免疫原	Synthetic peptide derived from internal region of human TRAP220/MED1
常规说明	<p>The Life Science industry has been in the grips of a reproducibility crisis for a number of years. Abcam is leading the way in addressing this with our range of recombinant monoclonal antibodies and knockout edited cell lines for gold-standard validation. Please check that this product meets your needs before purchasing.</p> <p>If you have any questions, special requirements or concerns, please send us an inquiry and/or contact our Support team ahead of purchase. Recommended alternatives for this product can be found below, along with publications, customer reviews and Q&amp;As</p>

### 性能

形式	Liquid
存放说明	Shipped at 4°C. Store at -20°C. Stable for 12 months at -20°C.
存储溶液	pH: 7.40 Preservative: 0.02% Sodium azide Constituents: PBS, 50% Glycerol (glycerin, glycerine), 0.87% Sodium chloride
纯度	Immunogen affinity purified
克隆	多克隆
同种型	IgG

### 应用

**The Abpromise guarantee**      **Abpromise™** 承诺保证使用ab64965于以下的经测试应用

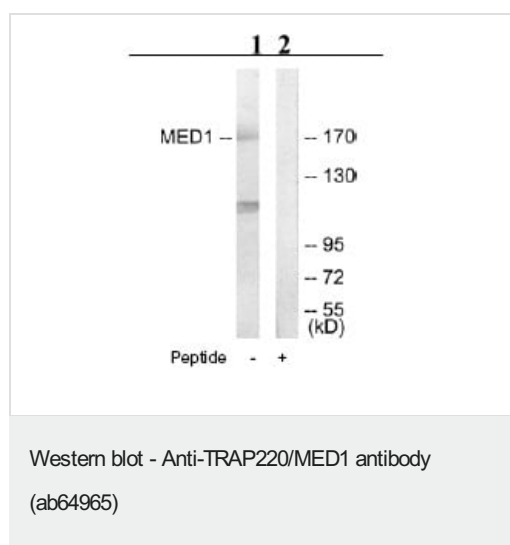
“应用说明”部分 下显示的仅为推荐的起始稀释度;实际最佳的稀释度/浓度应由使用者检定。

应用	Ab评论	说明
ELISA		Use at an assay dependent concentration.
IP	★★★★★ (1)	Use at an assay dependent concentration.
IHC-P		1/50 - 1/100. Perform heat mediated antigen retrieval via the pressure cooker method before commencing with IHC staining protocol.
WB	★★★★★ (2)	1/500 - 1/1000. Detects a band of approximately 170 kDa (predicted molecular weight: 180 kDa).

## 靶标

<b>功能</b>	Component of the Mediator complex, a coactivator involved in the regulated transcription of nearly all RNA polymerase II-dependent genes. Mediator functions as a bridge to convey information from gene-specific regulatory proteins to the basal RNA polymerase II transcription machinery. Mediator is recruited to promoters by direct interactions with regulatory proteins and serves as a scaffold for the assembly of a functional preinitiation complex with RNA polymerase II and the general transcription factors.
<b>组织特异性</b>	Ubiquitously expressed.
<b>序列相似性</b>	Belongs to the Mediator complex subunit 1 family.
<b>翻译后修饰</b>	Phosphorylated by MAPK1 or MAPK3 during G2/M phase which may enhance protein stability and promote entry into the nucleolus. Phosphorylated upon DNA damage, probably by ATM or ATR.
<b>细胞定位</b>	Nucleus. A subset of the protein may enter the nucleolus subsequent to phosphorylation by MAPK1 or MAPK3.

## 图片



**All lanes** : Anti-TRAP220/MED1 antibody (ab64965) at 1/500 dilution

**Lane 1** : extracts from Jurkat cells, without immunising peptide

**Lane 2** : extracts from Jurkat cells, with immunising peptide

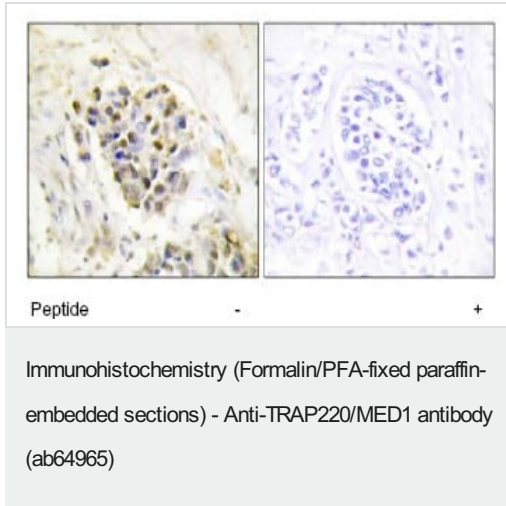
**Predicted band size:** 180 kDa

**Observed band size:** 170 kDa

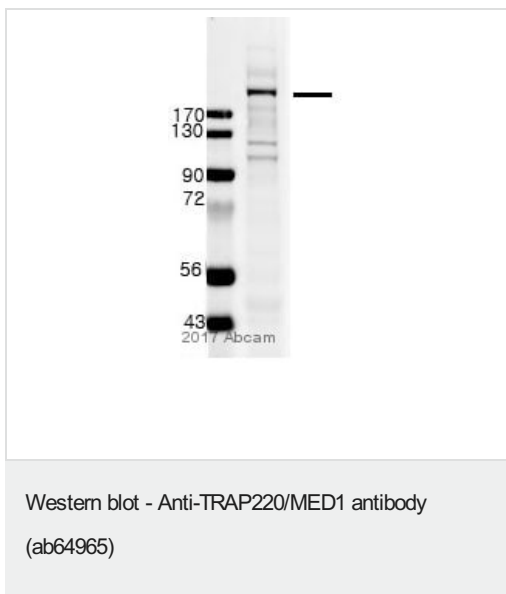
**Additional bands at:** 110 kDa. We are unsure as to the identity of these extra bands.

The amount of positive control loading for the WB is 5-30 ug of total

protein. The amount of the peptide for the WB is 5-10 ug.



Immunohistochemistry analysis of paraffin-embedded human breast carcinoma tissue using 1/50 ab64965, after antigen retrieval by boiling in a pressure cooker for 2-3 min. Polymer system was used for signal enhancing and DAB staining was performed for visualising the signal.



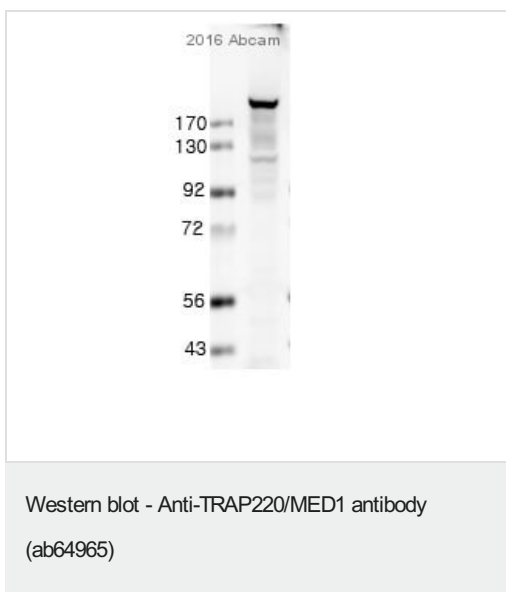
Anti-TRAP220/MED1 antibody (ab64965) at 1/1000 dilution + MEF (Mouse embryonic fibroblast cell line) whole cell lysate at 20  $\mu$ g

### Secondary

Alexa Fluor 680 anti-Rabbit antibody at 1/5000 dilution

**Predicted band size:** 180 kDa

Exposure time: 10 minutes



Anti-TRAP220/MED1 antibody (ab64965) at 1/1000 dilution + U-2 OS (human bone osteosarcoma epithelial cell line) whole cell lysate at 50  $\mu$ g

### Secondary

Alexa Fluor 680 anti-Rabbit

**Predicted band size:** 180 kDa

Exposure time: 10 minutes.

**Please note:** All products are "FOR RESEARCH USE ONLY. NOT FOR USE IN DIAGNOSTIC PROCEDURES"

## **Our Abpromise to you: Quality guaranteed and expert technical support**

---

- Replacement or refund for products not performing as stated on the datasheet
- Valid for 12 months from date of delivery
- Response to your inquiry within 24 hours
  
- We provide support in Chinese, English, French, German, Japanese and Spanish
- Extensive multi-media technical resources to help you
- We investigate all quality concerns to ensure our products perform to the highest standards

If the product does not perform as described on this datasheet, we will offer a refund or replacement. For full details of the Abpromise, please visit <https://www.abcam.cn/abpromise> or contact our technical team.

## **Terms and conditions**

---

- Guarantee only valid for products bought direct from Abcam or one of our authorized distributors