

Anti-TRAP1 antibody [EPR5381] ab109323

重组 RabMAb

3 References 4 图像

概述	
产品名称	Anti-TRAP1抗体[EPR5381]
描述	兔单克隆抗体[EPR5381] to TRAP1
宿主	Rabbit
经测试应用	适用于: WB, IHC-P 不适用于: Flow Cyt or IP
种属反应性	与反应: Human
免疫原	Synthetic peptide. This information is proprietary to Abcam and/or its suppliers.
阳性对照	WB: K562, HL60, 293T and HeLa cell lysates IHC-P: Human kidney and liver tissues
常规说明	<p>This product is a recombinant monoclonal antibody, which offers several advantages including:</p> <ul style="list-style-type: none">- High batch-to-batch consistency and reproducibility- Improved sensitivity and specificity- Long-term security of supply- Animal-free production <p>For more information see here.</p> <p>Our RabMAb[®] technology is a patented hybridoma-based technology for making rabbit monoclonal antibodies. For details on our patents, please refer to RabMAb[®] patents.</p> <p>Mouse, Rat: We have preliminary internal testing data to indicate this antibody may not react with these species. Please contact us for more information.</p>
性能	
形式	Liquid
存放说明	Shipped at 4°C. Store at -20°C. Stable for 12 months at -20°C.
存储溶液	pH: 7.20 Preservative: 0.05% Sodium azide Constituents: 0.1% BSA, 40% Glycerol (glycerin, glycerine), 9.85% Tris glycine, 50% Tissue culture supernatant
纯度	Protein A purified
克隆	单克隆

克隆编号EPR5381

同种型IgG

应用

The Abpromise guarantee **Abpromise™**承诺保证使用ab109323于以下的经测试应用

“应用说明”部分 下显示的仅为推荐的起始稀释度;实际最佳的稀释度/浓度应由使用者检定。

应用	Ab评论	说明
WB		1/10000 - 1/50000. Detects a band of approximately 75 kDa (predicted molecular weight: 80 kDa).
IHC-P		1/100 - 1/250. Perform heat mediated antigen retrieval before commencing with IHC staining protocol.

应用说明 Is unsuitable for Flow Cyt or IP.

靶标

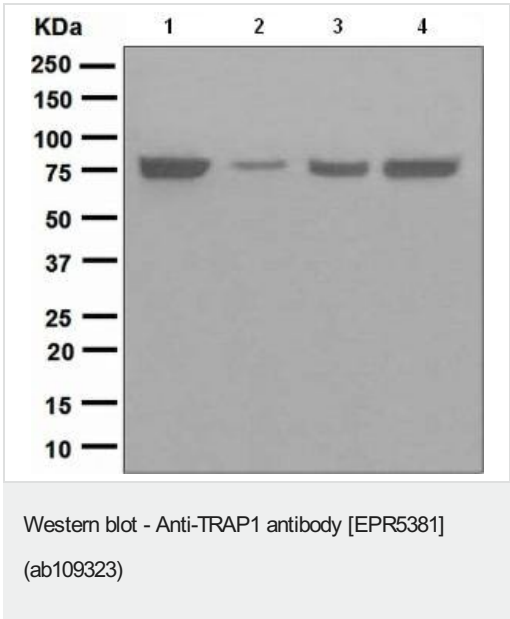
功能 Chaperone that expresses an ATPase activity.

组织特异性 Found in skeletal muscle, liver, heart, brain, kidney, pancreas, lung and placenta.

序列相似性 Belongs to the heat shock protein 90 family.

细胞定位 Mitochondrion.

图片



All lanes : Anti-TRAP1 antibody [EPR5381] (ab109323) at 1/10000 dilution

Lane 1 : K562 cell lysate

Lane 2 : HL60 cell lysate

Lane 3 : 293T (Human embryonic kidney epithelial cell) cell lysate

Lane 4 : HeLa cell lysate

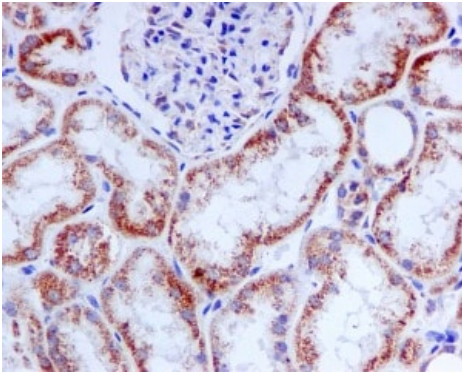
Lysates/proteins at 10 µg per lane.

Secondary

All lanes : HRP labelled goat anti-rabbit at 1/2000 dilution

Predicted band size: 80 kDa

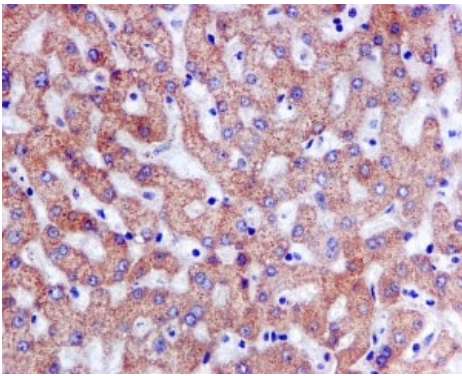
Observed band size: 75 kDa



Immunohistochemistry (Formalin/PFA-fixed paraffin-embedded sections) - Anti-TRAP1 antibody [EPR5381] (ab109323)

ab109323, at a 1/100 dilution, staining TRAP1 in paraffin embedded Human kidney tissue by Immunohistochemistry.

Perform heat mediated antigen retrieval before commencing with IHC staining protocol.

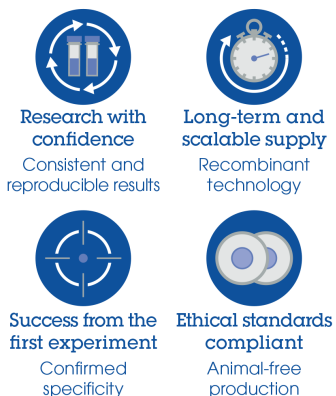


Immunohistochemistry (Formalin/PFA-fixed paraffin-embedded sections) - Anti-TRAP1 antibody [EPR5381] (ab109323)

ab109323, at a 1/100 dilution, staining TRAP1 in paraffin embedded Human liver tissue by Immunohistochemistry.

Perform heat mediated antigen retrieval before commencing with IHC staining protocol.

Why choose a recombinant antibody?



Anti-TRAP1 antibody [EPR5381] (ab109323)

Please note: All products are "FOR RESEARCH USE ONLY. NOT FOR USE IN DIAGNOSTIC PROCEDURES"

Our Abpromise to you: Quality guaranteed and expert technical support

- Replacement or refund for products not performing as stated on the datasheet
- Valid for 12 months from date of delivery
- Response to your inquiry within 24 hours

- We provide support in Chinese, English, French, German, Japanese and Spanish
- Extensive multi-media technical resources to help you
- We investigate all quality concerns to ensure our products perform to the highest standards

If the product does not perform as described on this datasheet, we will offer a refund or replacement. For full details of the Abpromise, please visit <https://www.abcam.cn/abpromise> or contact our technical team.

Terms and conditions

- Guarantee only valid for products bought direct from Abcam or one of our authorized distributors