


Anti-TRA-1-60 (R) antibody [TRA-1-60] ab16288

★★★★★ 8 Abreviews 123 References 4 图像

概述

产品名称	Anti-TRA-1-60 (R)抗体[TRA-1-60]
描述	小鼠单克隆抗体[TRA-1-60] to TRA-1-60 (R)
宿主	Mouse
经测试应用	适用于: ICC, WB
种属反应性	与反应: Human 预测可用于: Rabbit 
免疫原	Tissue, cells or virus corresponding to Human TRA-1-60 (R). Human embryonal carcinoma cell line 2102Ep cl.2A6.
阳性对照	WB: Human embryonic stem cell lysate. ICC: Human embryonic stem cells.
常规说明	<p>This antibody clone is manufactured by Abcam. If you require a custom buffer formulation or conjugation for your experiments, please contact orders@abcam.com.</p> <p>The Life Science industry has been in the grips of a reproducibility crisis for a number of years. Abcam is leading the way in addressing this with our range of recombinant monoclonal antibodies and knockout edited cell lines for gold-standard validation. Please check that this product meets your needs before purchasing.</p> <p>If you have any questions, special requirements or concerns, please send us an inquiry and/or contact our Support team ahead of purchase. Recommended alternatives for this product can be found below, along with publications, customer reviews and Q&As</p>

性能

形式	Liquid
存放说明	Shipped at 4°C. Store at +4°C short term (1-2 weeks). Upon delivery aliquot. Store at -20°C or -80°C. Avoid freeze / thaw cycle.
存储溶液	<p>pH: 7.40</p> <p>Preservative: 0.02% Sodium azide</p> <p>Constituents: PBS, 6.97% L-Arginine</p>
纯度	Tissue culture supernatant
纯化说明	Tissue culture supernatant was cross flow concentrated and buffer exchanged to PBS
克隆	单克隆

克隆编号	TRA-1-60
骨髓瘤	P3x66Ag.8-Sp2/0
同种型	IgM

应用

The Abpromise guarantee

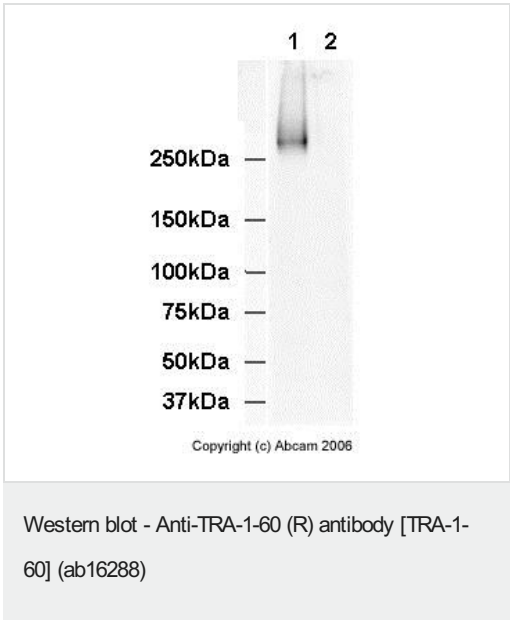
Abpromise™承诺保证使用ab16288于以下的经测试应用
 “应用说明”部分 下显示的仅为推荐的起始稀释度;实际最佳的稀释度/浓度应由使用者检定。

应用	Ab评论	说明
ICC		1/500.
WB	★★★★★ (1)	Use a concentration of 1 - 10 µg/ml. Detects a band of approximately 250 kDa (predicted molecular weight: 235 kDa).

靶标

相关性	TRA-1-60 is a marker of Human Embryonic Stem, Germ and Carcinoma Cells but Not Mouse Embryonic Stem, Germ or Carcinoma Cells. The TRA-1-60 target has been reported to be a carbohydrate epitope associated with podocalyxin (PubMed IDs: 10493530, 17124010).
细胞定位	Cell Membrane

图片



All lanes : Anti-TRA-1-60 (R) antibody [TRA-1-60] (ab16288) at 10 µg/ml

Lane 1 : Human Embryonic Stem Cell Lysate
Lane 2 : Mouse Embryonic Stem Cell Lysate

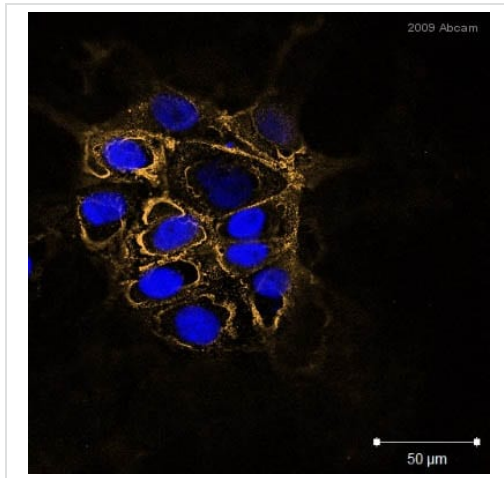
Lysates/proteins at 20 µg per lane.

Secondary
All lanes : Goat F(ab')₂ Anti-Mouse IgM mu chain (HRP) ([ab5930](#)) at 1/5000 dilution

Predicted band size: 235 kDa
Observed band size: 250 kDa

As expected, ab16288 recognizes a band in Human Embryonic Stem Cell Lysate but not Mouse Embryonic Stem Cell Lysate. The

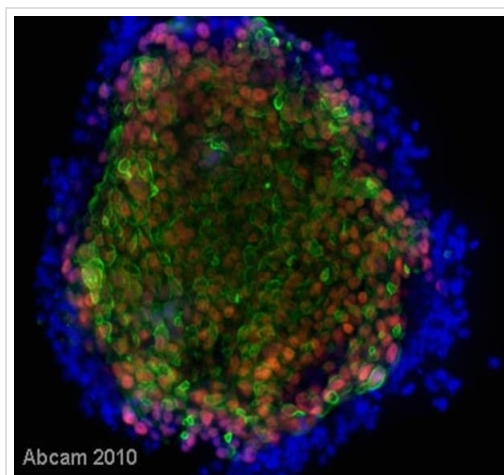
smear above the main band is due to protein glycosylation. The Western Blot profile is as expected for the TRA-1-60 monoclonal antibody.



Immunocytochemistry - Anti-TRA-1-60 (R) antibody
[TRA-1-60] (ab16288)

This image is courtesy of an Abreview submitted by Ms Fiona Lewis

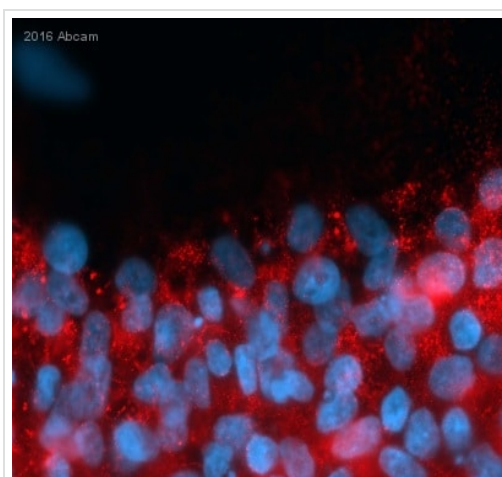
Immunocytochemical analysis of ab16288 staining TRA-160 (R) in HUES7 cells. Cells were fixed with paraformaldehyde, permeabilized with Triton and blocked in 10% serum for 1 hour at 24°C. Samples were incubated with primary antibody, dilution 1:500 (1% serum, 0.1% Triton in PBS), for 1 hour at 37°C. An Alexa Fluor® 647-conjugated goat polyclonal to mouse IgG, dilution 1:100, was used as secondary antibody.



Immunocytochemistry - Anti-TRA-1-60 (R) antibody
[TRA-1-60] (ab16288)

This image is courtesy of an anonymous collaborator.

This image shows a colony of Human Embryonic Stem Cells stained with dapi (blue), anti-Oct4 antibody [ab19857](#) (red) and Tra-1-60 antibody ab16288 (green). The nuclei of Oct4-positive undifferentiated hESCs stained bright red, whereas Tra-1-60 staining was seen at the cell membrane. These antibodies can be used as markers of undifferentiated Human Embryonic Stem Cells.



Immunocytochemistry - Anti-TRA-1-60 (R) antibody

[TRA-1-60] (ab16288)

This image is courtesy of an abreview submitted by
Vladimir Milenkovic, University Hospital Regensburg,
Germany

Immunocytochemistry analysis of human iPSC cells labeling TRA-1-60 (R) with ab16288 at 1:500 dilution. Cells were fixed with paraformaldehyde and permeabilized with 0.5% TX100. 5% serum was used to block cells for 20 minutes at 25°C. A polyclonal goat anti-mouse Cy3 secondary antibody was used at 1:500 dilution.

Please note: All products are "FOR RESEARCH USE ONLY. NOT FOR USE IN DIAGNOSTIC PROCEDURES"

Our Abpromise to you: Quality guaranteed and expert technical support

- Replacement or refund for products not performing as stated on the datasheet
- Valid for 12 months from date of delivery
- Response to your inquiry within 24 hours
- We provide support in Chinese, English, French, German, Japanese and Spanish
- Extensive multi-media technical resources to help you
- We investigate all quality concerns to ensure our products perform to the highest standards

If the product does not perform as described on this datasheet, we will offer a refund or replacement. For full details of the Abpromise, please visit <https://www.abcam.cn/abpromise> or contact our technical team.

Terms and conditions

- Guarantee only valid for products bought direct from Abcam or one of our authorized distributors