

Anti-TPR antibody [EPR8982] ab170940

重组 RabMAb

3 References **3 图像**

概述

产品名称	Anti-TPR抗体[EPR8982]
描述	兔单克隆抗体[EPR8982] to TPR
宿主	Rabbit
经测试应用	适用于: ICC/IF, WB 不适用于: Flow Cyt, IHC-P or IP
种属反应性	与反应: Human 不与反应: Mouse, Rat
免疫原	Synthetic peptide within Human TPR (Cysteine residue). The exact sequence is proprietary. Database link: <u>P12270</u>
阳性对照	HeLa + Camptothecin, HeLa, HeLa + Staurosporine, HeLa, 293T and Jurkat whole cell lysate (<u>ab7899</u>), HeLa cells
常规说明	This product is a recombinant monoclonal antibody, which offers several advantages including: <ul style="list-style-type: none"> - High batch-to-batch consistency and reproducibility - Improved sensitivity and specificity - Long-term security of supply - Animal-free production For more information <u>see here</u> . Our RabMAb [®] technology is a patented hybridoma-based technology for making rabbit monoclonal antibodies. For details on our patents, please refer to <u>RabMAb[®] patents</u> .

性能

形式	Liquid
存放说明	Shipped at 4°C. Store at +4°C short term (1-2 weeks). Upon delivery aliquot. Store at -20°C long term. Avoid freeze / thaw cycle.
存储溶液	pH: 7.2 Preservative: 0.01% Sodium azide Constituents: 9% PBS, 40% Glycerol (glycerin, glycerine), 0.05% BSA, 50% Tissue culture supernatant
纯度	Tissue culture supernatant

克隆	单克隆
克隆编号	EPR8982
同种型	IgG

应用

The Abpromise guarantee

Abpromise™承诺保证使用ab170940于以下的经测试应用

“应用说明”部分 下显示的仅为推荐的起始稀释度;实际最佳的稀释度/浓度应由使用者检定。

应用	Ab评论	说明
ICC/IF		1/100 - 1/250.
WB		1/1000 - 1/5000. Predicted molecular weight: 267 kDa.

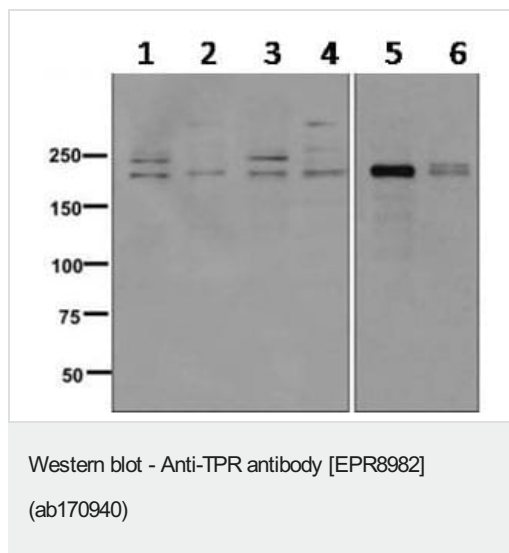
应用说明

Is unsuitable for Flow Cyt,IHC-P or IP.

靶标

功能	Component of the cytoplasmic fibrils of the nuclear pore complex implicated in nuclear protein import. Its N-terminus is involved in activation of oncogenic kinases. Plays a role in the mitotic spindle checkpoint.
组织特异性	Highest in testis, lung, thymus, spleen and brain, lower levels in heart, liver and kidney.
疾病相关	Defects in TPR are a cause of thyroid papillary carcinoma (TPC) [MIM:188550]. TPC is a common tumor of the thyroid that typically arises as an irregular, solid or cystic mass from otherwise normal thyroid tissue. Papillary carcinomas are malignant neoplasm characterized by the formation of numerous, irregular, finger-like projections of fibrous stroma that is covered with a surface layer of neoplastic epithelial cells. Note=Chromosomal aberrations involving TPR are found in thyroid papillary carcinomas. Intrachromosomal rearrangement that links the 5'-end of the TPR gene to the protein kinase domain of NTRK1 forms the fusion protein TRK-T1. TRK-T1 is a 55 kDa protein reacting with antibodies against the carboxy terminus of the NTRK1 protein. Note=Involved in tumorigenic rearrangements with the MET or RAF genes.
翻译后修饰	Phosphorylated upon DNA damage, probably by ATM or ATR.
细胞定位	Nucleus > nuclear pore complex. Nucleus membrane. Chromosome > centromere > kinetochore. The assembly of the NPC is a stepwise process in which Trp-containing peripheral structures assemble after other components, including p62. Detected at kinetochores during prometaphase.

图片



All lanes : Anti-TPR antibody [EPR8982] (ab170940) at 1/1000 dilution

Lane 1 : HeLa + Camptothecin cell lysates

Lanes 2 & 4 : HeLa cell lysates

Lane 3 : HeLa + Staurosporine cell lysates

Lane 5 : 293T cell lysates

Lane 6 : Jurkat cell lysates

Lysates/proteins at 10 µg per lane.

Predicted band size: 267 kDa



Immunofluorescence analysis of HeLa cells labeling TPR with ab170940 at 1/100 dilution.

Why choose a recombinant antibody?



Research with confidence
Consistent and reproducible results



Long-term and scalable supply
Recombinant technology



Success from the first experiment
Confirmed specificity



Ethical standards compliant
Animal-free production

Anti-TPR antibody [EPR8982] (ab170940)

Please note: All products are "FOR RESEARCH USE ONLY. NOT FOR USE IN DIAGNOSTIC PROCEDURES"

Our Abpromise to you: Quality guaranteed and expert technical support

- Replacement or refund for products not performing as stated on the datasheet
- Valid for 12 months from date of delivery
- Response to your inquiry within 24 hours
- We provide support in Chinese, English, French, German, Japanese and Spanish
- Extensive multi-media technical resources to help you
- We investigate all quality concerns to ensure our products perform to the highest standards

If the product does not perform as described on this datasheet, we will offer a refund or replacement. For full details of the Abpromise, please visit <https://www.abcam.cn/abpromise> or contact our technical team.

Terms and conditions

- Guarantee only valid for products bought direct from Abcam or one of our authorized distributors