


Anti-TPR antibody ab84516

19 References **4 图像**

概述

产品名称	Anti-TPR抗体
描述	兔多克隆抗体to TPR
宿主	Rabbit
经测试应用	适用于: IHC-P, ICC/IF
种属反应性	与反应: Mouse, Human 预测可用于: Rabbit, Cow, Dog, Pig, Chimpanzee, Rhesus monkey, Gorilla, Chinese hamster, Elephant 
免疫原	Synthetic peptide, corresponding to a region between C terminal amino acids 2300-2349 of Human TPR (NP_003283.1).
阳性对照	Human Breast Carcinoma, Colon Carcinoma, Hodgkins Lymphoma, Linitis Plastica Stomach Cancer, Ovarian Carcinoma, Prostate Carcinoma, Skin Basal Cell Carcinoma, Skin Squamous Cell Carcinoma, Stomach Adenocarcinoma, Testicular Seminoma and mouse Squamous Cell Carcinoma tissue.
常规说明	Concentration is optimized for IHC and not determined The Life Science industry has been in the grips of a reproducibility crisis for a number of years. Abcam is leading the way in addressing this with our range of recombinant monoclonal antibodies and knockout edited cell lines for gold-standard validation. Please check that this product meets your needs before purchasing. If you have any questions, special requirements or concerns, please send us an inquiry and/or contact our Support team ahead of purchase. Recommended alternatives for this product can be found below, along with publications, customer reviews and Q&As

性能

形式	Liquid
存放说明	Shipped at 4°C. Upon delivery aliquot and store at -20°C. Avoid freeze / thaw cycles.
存储溶液	pH: 6.8 Preservative: 0.09% Sodium azide Constituents: 0.1% BSA, Tris buffered saline
纯度	Immunogen affinity purified
纯化说明	Affinity purified using an epitope specific to TPR immobilized on solid support.

克隆	多克隆
同种型	IgG

应用

The Abpromise guarantee **Abpromise™**承诺保证使用ab84516于以下的经测试应用

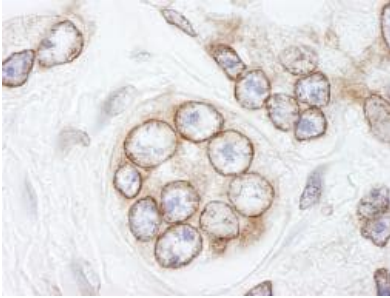
“应用说明”部分 下显示的仅为推荐的起始稀释度;实际最佳的稀释度/浓度应由使用者检定。

应用	Ab评论	说明
IHC-P		1/100 - 1/500. Epitope exposure is recommended. Exposure with citrate buffer will enhance staining. Likely to work with frozen sections.
ICC/IF		1/100 - 1/500. Permeabilization with Triton-X 100 is recommended.

靶标

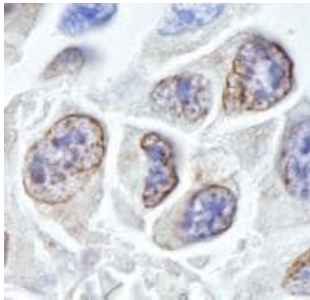
功能	Component of the cytoplasmic fibrils of the nuclear pore complex implicated in nuclear protein import. Its N-terminus is involved in activation of oncogenic kinases. Plays a role in the mitotic spindle checkpoint.
组织特异性	Highest in testis, lung, thymus, spleen and brain, lower levels in heart, liver and kidney.
疾病相关	Defects in TPR are a cause of thyroid papillary carcinoma (TPC) [MIM:188550]. TPC is a common tumor of the thyroid that typically arises as an irregular, solid or cystic mass from otherwise normal thyroid tissue. Papillary carcinomas are malignant neoplasm characterized by the formation of numerous, irregular, finger-like projections of fibrous stroma that is covered with a surface layer of neoplastic epithelial cells. Note=Chromosomal aberrations involving TPR are found in thyroid papillary carcinomas. Intrachromosomal rearrangement that links the 5'-end of the TPR gene to the protein kinase domain of NTRK1 forms the fusion protein TRK-T1. TRK-T1 is a 55 kDa protein reacting with antibodies against the carboxy terminus of the NTRK1 protein. Note=Involved in tumorigenic rearrangements with the MET or RAF genes.
翻译后修饰	Phosphorylated upon DNA damage, probably by ATM or ATR.
细胞定位	Nucleus > nuclear pore complex. Nucleus membrane. Chromosome > centromere > kinetochore. The assembly of the NPC is a stepwise process in which Trp-containing peripheral structures assemble after other components, including p62. Detected at kinetochores during prometaphase.

图片



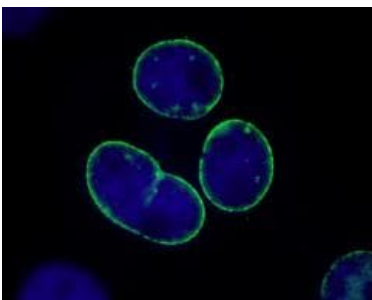
Immunohistochemistry (Formalin/PFA-fixed paraffin-embedded sections) - Anti-TPR antibody (ab84516)

ab84516 at a 1/250 dilution, staining in human TPR in human prostate carcinoma, by immunohistochemistry, Formalin/PFA-fixed paraffin-embedded tissue. Detection: DAB staining using anti-Rabbit secondary antibody at a dilution of 1/100.



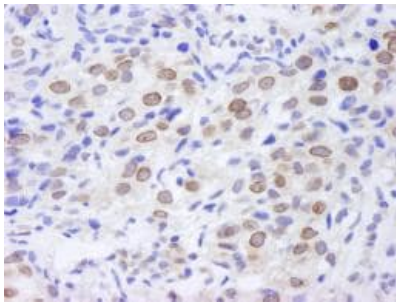
Immunohistochemistry (Formalin/PFA-fixed paraffin-embedded sections) - Anti-TPR antibody (ab84516)

ab84516 at a 1:250 dilution, staining mouse TPR in mouse squamous cell carcinoma, by immunohistochemistry, Formalin/PFA-fixed paraffin-embedded tissue. Detection: DAB staining using anti-Rabbit secondary antibody at a dilution of 1/100.



Immunocytochemistry/ Immunofluorescence - Anti-TPR antibody (ab84516)

ab84516 at a 1/250 dilution, staining human TPR in NBF-fixed asynchronous HeLa cells by immunocytochemistry. Detection: anti-rabbit IgG-FITC conjugate used at a dilution of 1/100.



ab84516 at a 1/250 dilution, staining TPR in human breast carcinoma, by immunohistochemistry, Formalin/PFA-fixed paraffin-embedded tissue. Detection: DAB staining using anti-Rabbit secondary antibody at a dilution of 1/100.

Immunohistochemistry (Formalin/PFA-fixed paraffin-embedded sections) - Anti-TPR antibody (ab84516)

Please note: All products are "FOR RESEARCH USE ONLY. NOT FOR USE IN DIAGNOSTIC PROCEDURES"

Our Abpromise to you: Quality guaranteed and expert technical support

- Replacement or refund for products not performing as stated on the datasheet
- Valid for 12 months from date of delivery
- Response to your inquiry within 24 hours
- We provide support in Chinese, English, French, German, Japanese and Spanish
- Extensive multi-media technical resources to help you
- We investigate all quality concerns to ensure our products perform to the highest standards

If the product does not perform as described on this datasheet, we will offer a refund or replacement. For full details of the Abpromise, please visit <https://www.abcam.cn/abpromise> or contact our technical team.

Terms and conditions

- Guarantee only valid for products bought direct from Abcam or one of our authorized distributors