

### Anti-TPPP2 antibody ab121215

[2 References](#) [3 图像](#)

#### 概述

产品名称	Anti-TPPP2抗体
描述	兔多克隆抗体to TPPP2
宿主	Rabbit
经测试应用	适用于: ICC/IF, WB, IHC-P
种属反应性	与反应: Human
免疫原	antigen sequence, corresponding to amino acids 8-150 of Human TPPP2.
阳性对照	Human kidney tissue; TPPP2 transfected HEK293T lysate.
常规说明	<p>The Life Science industry has been in the grips of a reproducibility crisis for a number of years. Abcam is leading the way in addressing this with our range of recombinant monoclonal antibodies and knockout edited cell lines for gold-standard validation. Please check that this product meets your needs before purchasing.</p> <p>If you have any questions, special requirements or concerns, please send us an inquiry and/or contact our Support team ahead of purchase. Recommended alternatives for this product can be found below, along with publications, customer reviews and Q&amp;As</p>

#### 性能

形式	Liquid
存放说明	Shipped at 4°C. Upon delivery aliquot and store at -20°C. Avoid freeze / thaw cycles.
存储溶液	<p>pH: 7.20</p> <p>Preservative: 0.02% Sodium azide</p> <p>Constituents: 59% PBS, 40% Glycerol (glycerin, glycerine)</p>
纯度	Immunogen affinity purified
克隆	多克隆
同种型	IgG

#### 应用

**The Abpromise guarantee** **Abpromise™** 承诺保证使用ab121215于以下的经测试应用

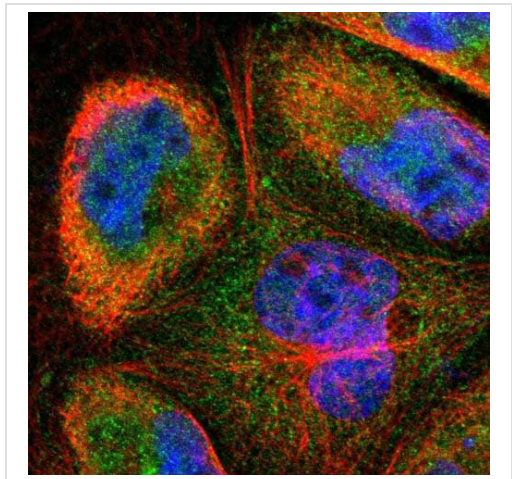
“应用说明”部分 下显示的仅为推荐的起始稀释度;实际最佳的稀释度/浓度应由使用者检定。

应用	Ab评论	说明
ICC/IF		Use a concentration of 1 - 4 µg/ml. Recommend PFA Fixation and Triton X-100 treatment
WB		Use a concentration of 0.04 - 0.4 µg/ml.
IHC-P		1/50 - 1/200. Perform heat mediated antigen retrieval with citrate buffer pH 6 before commencing with IHC staining protocol.

## 靶标

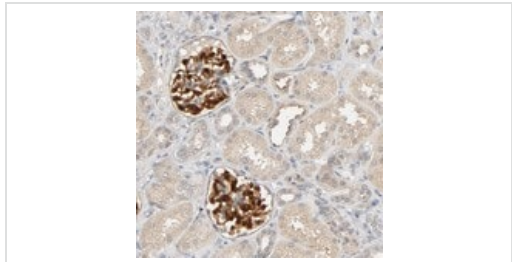
功能	May bind tubulin but has no microtubule bundling activity.
序列相似性	Belongs to the TPPP family.
细胞定位	Cytoplasm.

## 图片



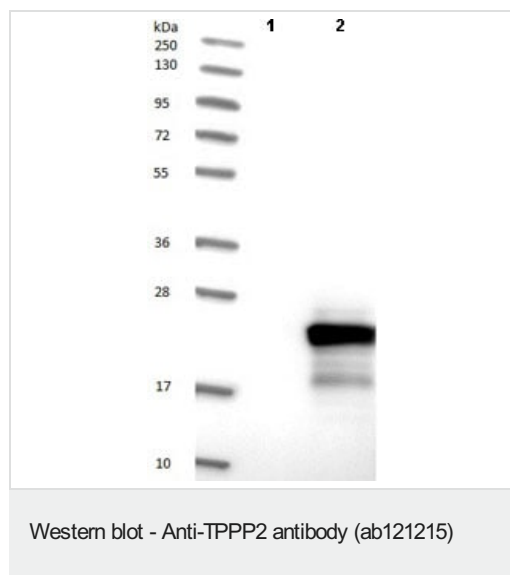
Immunofluorescent staining of Human cell line A-431 shows positivity in nucleus and cytoplasm. Recommended concentration of ab121215 1-4 µg/ml. Cells treated with PFA/Triton X-100.

Immunocytochemistry/ Immunofluorescence - Anti-TPPP2 antibody (ab121215)



ab121215 at 1/150 dilution staining TPPP2 in Paraffin-embedded Human Kidney tissue by Immunohistochemistry.

Immunohistochemistry (Formalin/PFA-fixed paraffin-embedded sections) - Anti-TPPP2 antibody (ab121215)



**All lanes :** Anti-TPPP2 antibody (ab121215) at 1/250 dilution

**Lane 1 :** Negative control (vector only transfected HEK293T lysate)

**Lane 2 :** Over expression Lysate (Coexpressed with a C terminal myc DDK tag (~3.1 kDa) in mammalian HEK293T cells

**Please note:** All products are "FOR RESEARCH USE ONLY. NOT FOR USE IN DIAGNOSTIC PROCEDURES"

### Our Abpromise to you: Quality guaranteed and expert technical support

- Replacement or refund for products not performing as stated on the datasheet
- Valid for 12 months from date of delivery
- Response to your inquiry within 24 hours
- We provide support in Chinese, English, French, German, Japanese and Spanish
- Extensive multi-media technical resources to help you
- We investigate all quality concerns to ensure our products perform to the highest standards

If the product does not perform as described on this datasheet, we will offer a refund or replacement. For full details of the Abpromise, please visit <https://www.abcam.cn/abpromise> or contact our technical team.

### Terms and conditions

- Guarantee only valid for products bought direct from Abcam or one of our authorized distributors