

Anti-Topoisomerase II alpha (phospho S1106) antibody [EP2722] ab75765

重组 RabMAb

4 References **3 图像**

概述

产品名称	Anti-Topoisomerase II alpha (phospho S1106)抗体[EP2722]
描述	兔单克隆抗体[EP2722] to Topoisomerase II alpha (phospho S1106)
宿主	Rabbit
经测试应用	适用于: WB, IHC-P 不适用于: Flow Cyt, ICC/IF or IP
种属反应性	与反应: Human
免疫原	Synthetic peptide. This information is proprietary to Abcam and/or its suppliers.
阳性对照	HeLa whole cell lysate (ab150035), untreated or treated with AP and colonic adenocarcinoma tissue.
常规说明	<p>This product is a recombinant monoclonal antibody, which offers several advantages including:</p> <ul style="list-style-type: none">- High batch-to-batch consistency and reproducibility- Improved sensitivity and specificity- Long-term security of supply- Animal-free production <p>For more information see here.</p> <p>Our RabMAb[®] technology is a patented hybridoma-based technology for making rabbit monoclonal antibodies. For details on our patents, please refer to RabMAb[®] patents.</p> <p>Mouse, Rat: We have preliminary internal testing data to indicate this antibody may not react with these species. Please contact us for more information.</p>

性能

形式	Liquid
存放说明	Shipped at 4°C. Upon delivery aliquot and store at -20°C. Avoid freeze / thaw cycles.
存储溶液	pH: 7.20 Preservative: 0.01% Sodium azide Constituents: 9% PBS, 40% Glycerol (glycerin, glycerine), 0.05% BSA, 50% Tissue culture supernatant

纯度	Protein A purified
克隆	单克隆
克隆编号	EP2722
同种型	IgG

应用

The Abpromise guarantee **Abpromise™**承诺保证使用ab75765于以下的经测试应用

“应用说明”部分 下显示的仅为推荐的起始稀释度;实际最佳的稀释度/浓度应由使用者检定。

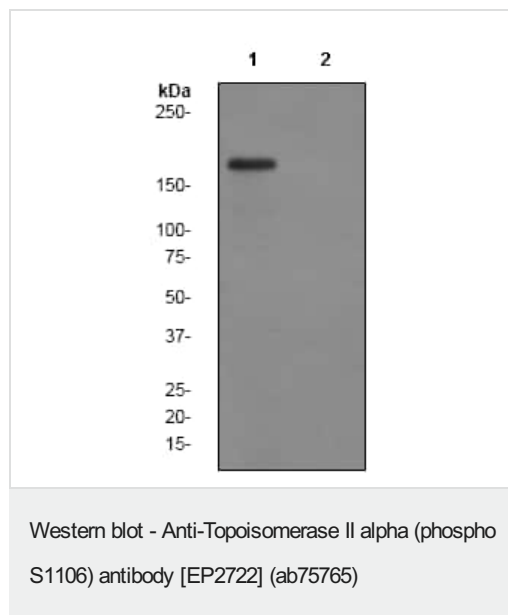
应用	Ab评论	说明
WB		1/500. Detects a band of approximately 174 kDa (predicted molecular weight: 174 kDa).
IHC-P		1/100 - 1/250. Perform heat mediated antigen retrieval before commencing with IHC staining protocol.

应用说明 Is unsuitable for Flow Cyt, ICC/IF or IP.

靶标

功能	Control of topological states of DNA by transient breakage and subsequent rejoining of DNA strands. Topoisomerase II makes double-strand breaks.
序列相似性	Belongs to the type II topoisomerase family.
翻译后修饰	Phosphorylation has no effect on catalytic activity.
细胞定位	Cytoplasm. Nucleus > nucleoplasm. Generally located in the nucleoplasm.

图片



All lanes : Anti-Topoisomerase II alpha (phospho S1106) antibody [EP2722] (ab75765) at 1/500 dilution

Lane 1 : HeLa cell lysates, untreated

Lane 2 : HeLa cell lysates, treated with AP

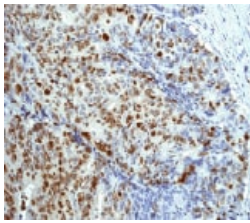
Lysates/proteins at 10 µg per lane.

Secondary

All lanes : goat anti-rabbit HRP at 1/2000 dilution

Predicted band size: 174 kDa

Observed band size: 174 kDa



Immunohistochemistry (Formalin/PFA-fixed paraffin-embedded sections) - Anti-Topoisomerase II alpha (phospho S1106) antibody [EP2722] (ab75765)

ab75765 at 1/100 dilution staining Topoisomerase II alpha in colonic adenocarcinoma by Immunohistochemistry, Paraffin-embedded tissue

Perform heat mediated antigen retrieval before commencing with IHC staining protocol.

Why choose a recombinant antibody?



Anti-Topoisomerase II alpha (phospho S1106) antibody [EP2722] (ab75765)

Please note: All products are "FOR RESEARCH USE ONLY. NOT FOR USE IN DIAGNOSTIC PROCEDURES"

Our Abpromise to you: Quality guaranteed and expert technical support

- Replacement or refund for products not performing as stated on the datasheet
- Valid for 12 months from date of delivery
- Response to your inquiry within 24 hours
- We provide support in Chinese, English, French, German, Japanese and Spanish
- Extensive multi-media technical resources to help you
- We investigate all quality concerns to ensure our products perform to the highest standards

If the product does not perform as described on this datasheet, we will offer a refund or replacement. For full details of the Abpromise, please visit <https://www.abcam.cn/abpromise> or contact our technical team.

Terms and conditions

- Guarantee only valid for products bought direct from Abcam or one of our authorized distributors