


### Anti-TopBP1 antibody ab105109

★★★★★ [3 Abreviews](#) [2 References](#) [2 图像](#)

#### 概述

产品名称	Anti-TopBP1抗体
描述	兔多克隆抗体to TopBP1
宿主	Rabbit
经测试应用	适用于: WB
种属反应性	与反应: Human 预测可用于: Mouse, Rabbit, Horse, Cow, Dog, Xenopus laevis, Macaque monkey, Gorilla, Chinese hamster 
免疫原	Synthetic peptide corresponding to Human TopBP1 aa 800-900 conjugated to keyhole limpet haemocyanin. (Peptide available as <a href="#">ab127877</a> )
常规说明	<p>The Life Science industry has been in the grips of a reproducibility crisis for a number of years. Abcam is leading the way in addressing this with our range of recombinant monoclonal antibodies and knockout edited cell lines for gold-standard validation. Please check that this product meets your needs before purchasing.</p> <p>If you have any questions, special requirements or concerns, please send us an inquiry and/or contact our Support team ahead of purchase. Recommended alternatives for this product can be found below, along with publications, customer reviews and Q&amp;As</p>

#### 性能

形式	Liquid
存放说明	Shipped at 4°C. Store at +4°C short term (1-2 weeks). Upon delivery aliquot. Store at -20°C or -80°C. Avoid freeze / thaw cycle.
存储溶液	pH: 7.40 Preservative: 0.02% Sodium azide Constituent: PBS
纯度	Batches of this product that have a concentration < 1mg/ml may have BSA added as a stabilising agent. If you would like information about the formulation of a specific lot, please contact our scientific support team who will be happy to help. Immunogen affinity purified

克隆

多克隆

同种型

IgG

应用

The Abpromise guarantee

Abpromise™承诺保证使用ab105109于以下的经测试应用

“应用说明”部分 下显示的仅为推荐的起始稀释度;实际最佳的稀释度/浓度应由使用者检定。

应用	Ab评论	说明
WB	★★★★★ (2)	Use a concentration of 1 µg/ml. Detects a band of approximately 180 kDa (predicted molecular weight: 171 kDa).

靶标

功能

Required for DNA replication. Plays a role in the rescue of stalled replication forks and checkpoint control. Binds double-stranded DNA breaks and nicks as well as single-stranded DNA. Recruits the SWI/SNF chromatin remodeling complex to E2F1-responsive promoters. Down-regulates E2F1 activity and inhibits E2F1-dependent apoptosis during G1/S transition and after DNA damage. Induces a large increase in the kinase activity of ATR.

组织特异性

Highly expressed in heart, brain, placenta, lung and kidney.

序列相似性

Contains 8 BRCT domains.

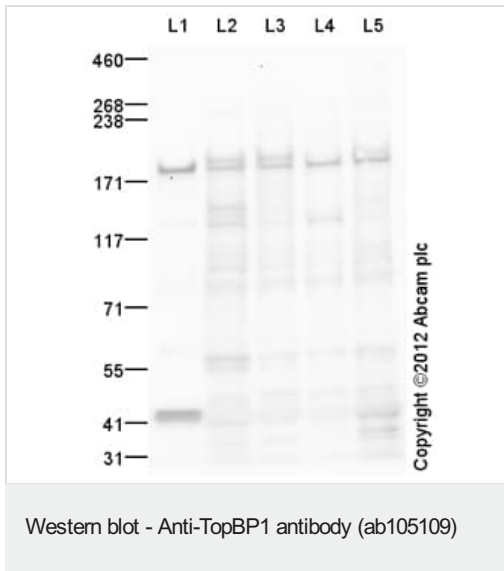
翻译后修饰

Phosphorylated on serine and threonine residues in response to X-ray irradiation. Ubiquitinated and degraded by the proteasome. X-ray irradiation reduces ubiquitination.

细胞定位

Nucleus. Cytoplasm, cytoskeleton, microtubule organizing center, centrosome. Cytoplasm, cytoskeleton, spindle pole. Chromosome. Detected on unpaired autosomes in meiotic prophase cells. Detected on X and Y chromosomes during later stages of prophase. Colocalizes with ATR and H2AFX at unsynapsed chromosome cores during prophase (By similarity). Has a uniform nuclear distribution during G phase. Colocalizes with BRCA1 at stalled replication forks during S phase. In mitotic cells it colocalizes with BRCA1 at spindle poles and centrosomes during metaphase and anaphase. Detected in discrete foci together with PML and numerous DNA repair enzymes after DNA damage by alkylating agents, UV or gamma irradiation. Localizes to sites of DNA damage in a H2AX- independent manner.

图片



**All lanes :** Anti-TopBP1 antibody (ab105109) at 1 µg/ml

**Lane 1 :** Human brain tissue lysate - total protein ([ab29466](#))

**Lane 2 :** HEK293 (Human embryonic kidney cell line) Whole Cell Lysate

**Lane 3 :** HeLa (Human epithelial carcinoma cell line) Whole Cell Lysate

**Lane 4 :** MCF7 (Human breast adenocarcinoma cell line) Whole Cell Lysate

**Lane 5 :** U2OS (Human osteosarcoma cell line) Whole Cell Lysate

Lysates/proteins at 10 µg per lane.

### Secondary

**All lanes :** Goat Anti-Rabbit IgG H&L (HRP) preadsorbed ([ab97080](#)) at 1/5000 dilution

Developed using the ECL technique.

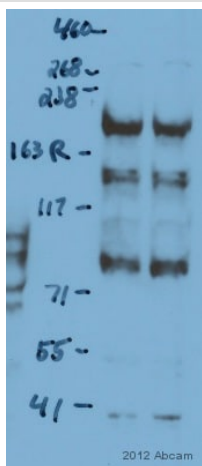
Performed under reducing conditions.

**Predicted band size:** 171 kDa

**Observed band size:** 180 kDa

**Additional bands at:** 120 kDa, 42 kDa, 56 kDa. We are unsure as to the identity of these extra bands.

**Exposure time:** 1 minute



Western blot - Anti-TopBP1 antibody (ab105109)

This image is courtesy of an anonymous Abreview

**All lanes :** Anti-TopBP1 antibody (ab105109) at 0.5 µg/ml

**All lanes :** Mouse ES whole cell lysate

Lysates/proteins at 200 µg per lane.

#### Secondary

**All lanes :** HRP Goat anti-rabbit IgG polyclonal at 1/10000 dilution

Developed using the ECL technique.

Performed under reducing conditions.

**Predicted band size:** 171 kDa

**Observed band size:** 200 kDa

**Additional bands at:** 145 kDa (possible non-specific binding), 85 kDa (possible non-specific binding)

**Exposure time:** 30 seconds

**Please note:** All products are "FOR RESEARCH USE ONLY. NOT FOR USE IN DIAGNOSTIC PROCEDURES"

#### Our Abpromise to you: Quality guaranteed and expert technical support

- Replacement or refund for products not performing as stated on the datasheet
- Valid for 12 months from date of delivery
- Response to your inquiry within 24 hours
- We provide support in Chinese, English, French, German, Japanese and Spanish
- Extensive multi-media technical resources to help you
- We investigate all quality concerns to ensure our products perform to the highest standards

If the product does not perform as described on this datasheet, we will offer a refund or replacement. For full details of the Abpromise, please visit <https://www.abcam.cn/abpromise> or contact our technical team.

#### Terms and conditions

- Guarantee only valid for products bought direct from Abcam or one of our authorized distributors