

### Anti-TOMM34 antibody ab103585

★★★★★ [2 Abreviews](#) [1 References](#) [3 图像](#)

#### 概述

产品名称	Anti-TOMM34抗体
描述	兔多克隆抗体to TOMM34
宿主	Rabbit
经测试应用	适用于: WB
种属反应性	与反应: Mouse, Human
免疫原	Recombinant full length protein within Human TOMM34 aa 1-350. The exact immunogen sequence used to generate this antibody is proprietary information. If additional detail on the immunogen is needed to determine the suitability of the antibody for your needs, please <a href="#">contact</a> our Scientific Support team to discuss your requirements.
阳性对照	Mouse testis tissue lysate. Hela NE.
常规说明	<p>The Life Science industry has been in the grips of a reproducibility crisis for a number of years. Abcam is leading the way in addressing this with our range of recombinant monoclonal antibodies and knockout edited cell lines for gold-standard validation. Please check that this product meets your needs before purchasing.</p> <p>If you have any questions, special requirements or concerns, please send us an inquiry and/or contact our Support team ahead of purchase. Recommended alternatives for this product can be found below, along with publications, customer reviews and Q&amp;As</p>

#### 性能

形式	Liquid
存放说明	Shipped at 4°C. Upon delivery aliquot. Store at -20°C or -80°C. Avoid freeze / thaw cycle.
存储溶液	pH: 7.40 Constituent: 100% PBS
纯度	Protein A purified
克隆	多克隆
同种型	IgG

#### 应用

## The Abpromise guarantee

**Abpromise™** 承诺保证使用ab103585于以下的经测试应用

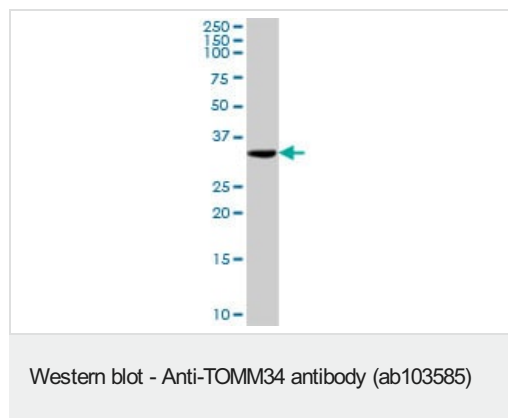
“应用说明”部分 下显示的仅为推荐的起始稀释度;实际最佳的稀释度/浓度应由使用者检定。

应用	Ab评论	说明
WB	★★★★★ (1)	1/500 - 1/1000. Predicted molecular weight: 35 kDa.

## 靶标

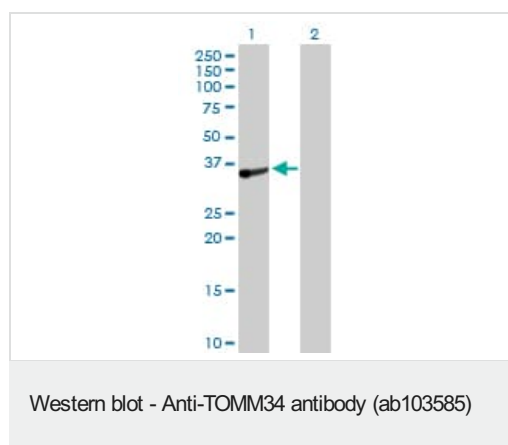
功能	Plays a role in the import of cytosolically synthesized preproteins into mitochondria. Binds the mature portion of precursor proteins. Interacts with cellular components, and possesses weak ATPase activity. May be a chaperone-like protein that helps to keep newly synthesized precursors in an unfolded import compatible state.
组织特异性	Ubiquitous.
序列相似性	Belongs to the Tom34 family. Contains 6 TPR repeats.
细胞定位	Cytoplasm. Mitochondrion outer membrane.

## 图片



Anti-TOMM34 antibody (ab103585) at 1/500 dilution + Mouse testis tissue lysate at 50 µg

**Predicted band size:** 35 kDa



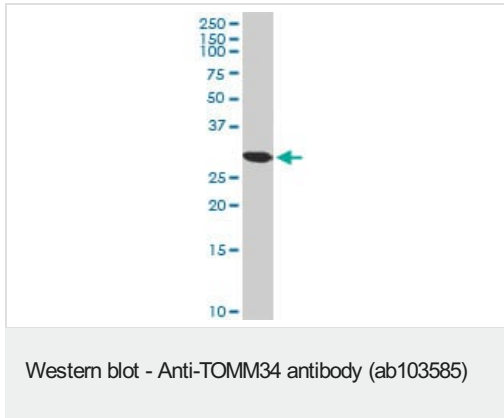
**All lanes :** Anti-TOMM34 antibody (ab103585) at 1/500 dilution

**Lane 1 :** TOMM34 transfected 293T cell lysate

**Lane 2 :** 293T non-transfected cell lysate

Lysates/proteins at 25 µg per lane.

**Predicted band size:** 35 kDa



Anti-TOMM34 antibody (ab103585) at 1/500 dilution + HeLa NE at 50 µg

**Predicted band size:** 35 kDa

**Please note:** All products are "FOR RESEARCH USE ONLY. NOT FOR USE IN DIAGNOSTIC PROCEDURES"

### Our Abpromise to you: Quality guaranteed and expert technical support

---

- Replacement or refund for products not performing as stated on the datasheet
- Valid for 12 months from date of delivery
- Response to your inquiry within 24 hours
- We provide support in Chinese, English, French, German, Japanese and Spanish
- Extensive multi-media technical resources to help you
- We investigate all quality concerns to ensure our products perform to the highest standards

If the product does not perform as described on this datasheet, we will offer a refund or replacement. For full details of the Abpromise, please visit <https://www.abcam.cn/abpromise> or contact our technical team.

### Terms and conditions

---

- Guarantee only valid for products bought direct from Abcam or one of our authorized distributors