

Anti-TOMM22/TOM22 antibody [EPR13505] - N-terminal ab179826

重组 RabMAb

3 References **7 图像**

概述

产品名称	Anti-TOMM22/TOM22抗体[EPR13505] - N-terminal
描述	兔单克隆抗体[EPR13505] to TOMM22/TOM22 - N-terminal
宿主	Rabbit
经测试应用	适用于: WB, IHC-P, ICC/IF, IP, Flow Cyt (Intra)
种属反应性	与反应: Human
免疫原	Synthetic peptide within Human TOMM22/TOM22 aa 1-100 (N terminal) (Cysteine residue). The exact sequence is proprietary. Database link: Q9NS69
阳性对照	HeLa, K562, Raji and 293T cell lysates. Kidney and liver tissue. Raji and 293T cells.
常规说明	<p>This product is a recombinant monoclonal antibody, which offers several advantages including:</p> <ul style="list-style-type: none"> - High batch-to-batch consistency and reproducibility - Improved sensitivity and specificity - Long-term security of supply - Animal-free production <p>For more information see here.</p> <p>Our RabMAb[®] technology is a patented hybridoma-based technology for making rabbit monoclonal antibodies. For details on our patents, please refer to RabMAb[®] patents.</p> <p>Mouse, Rat: We have preliminary internal testing data to indicate this antibody may not react with these species. Please contact us for more information.</p>

性能

形式	Liquid
存放说明	Shipped at 4°C. Store at +4°C short term (1-2 weeks). Upon delivery aliquot. Store at -20°C long term. Avoid freeze / thaw cycle.
存储溶液	pH: 7.20 Preservative: 0.01% Sodium azide Constituents: 9% PBS, 40% Glycerol (glycerin, glycerine), 0.05% BSA, 50% Tissue culture

	supernatant
纯度	Tissue culture supernatant
克隆	单克隆
克隆编号	EPR13505
同种型	IgG

应用

The Abpromise guarantee **Abpromise™**承诺保证使用ab179826于以下的经测试应用

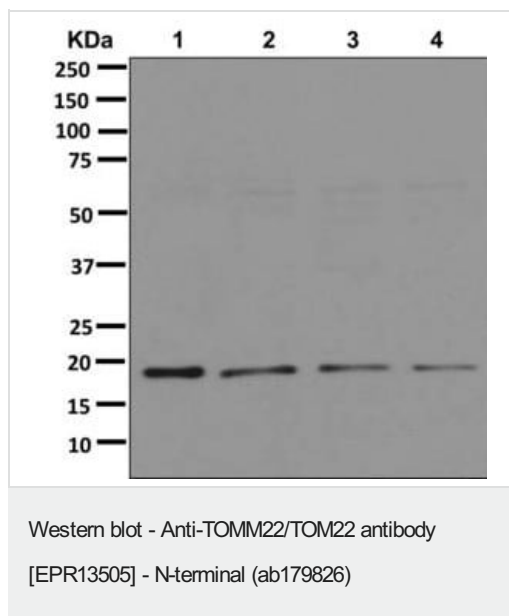
“应用说明”部分 下显示的仅为推荐的起始稀释度;实际最佳的稀释度/浓度应由使用者检定。

应用	Ab评论	说明
WB		1/1000 - 1/5000. Predicted molecular weight: 16 kDa.
IHC-P		1/100 - 1/250. Perform heat mediated antigen retrieval with citrate buffer pH 6 before commencing with IHC staining protocol.
ICC/IF		1/100 - 1/250.
IP		1/10 - 1/100.
Flow Cyt (Intra)		1/10 - 1/100. ab172730 - Rabbit monoclonal IgG, is suitable for use as an isotype control with this antibody.

靶标

细胞定位	Mitochondrion outer membrane; Single-pass membrane protein
------	--

图片



All lanes : Anti-TOMM22/TOM22 antibody [EPR13505] - N-terminal (ab179826) at 1/1000 dilution

Lane 1 : Raji cell lysate

Lane 2 : HeLa cell lysate

Lane 3 : K562 cell lysate

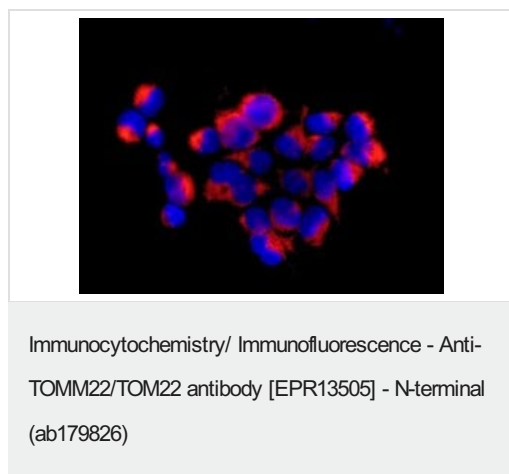
Lane 4 : 293T cell lysate

Lysates/proteins at 10 µg per lane.

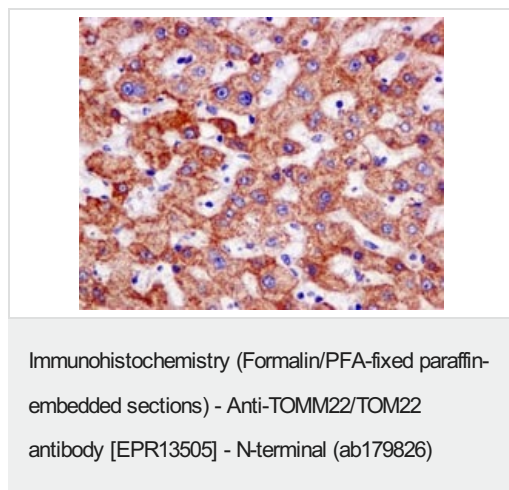
Secondary

All lanes : Goat anti-rabbit HRP at 1/2000 dilution

Predicted band size: 16 kDa

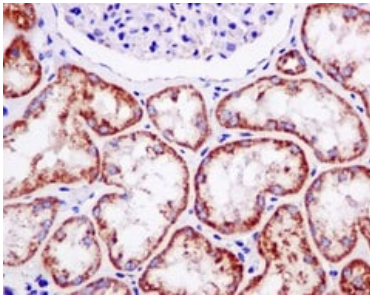


Immunofluorescent analysis of 293T cells labeling TOMM22/TOM22 with ab179826 at 1/100 dilution.



Immunohistochemical analysis of paraffin-embedded Human liver tissue labeling TOMM22/TOM22 with ab179826 at 1/1000 dilution.

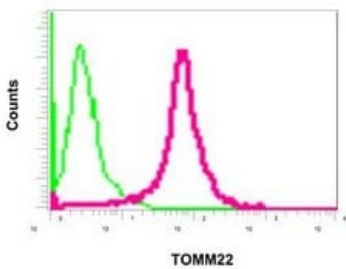
Perform heat mediated antigen retrieval with citrate buffer pH 6 before commencing with IHC staining protocol.



Immunohistochemistry (Formalin/PFA-fixed paraffin-embedded sections) - Anti-TOMM22/TOM22 antibody [EPR13505] - N-terminal (ab179826)

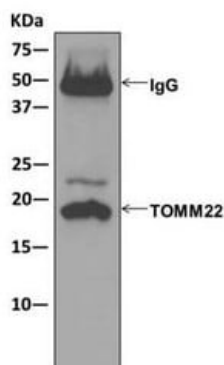
Immunohistochemical analysis of paraffin-embedded Human kidney tissue labeling TOMM22/TOM22 with ab179826 at 1/1000 dilution.

Perform heat mediated antigen retrieval with citrate buffer pH 6 before commencing with IHC staining protocol.



Flow Cytometry (Intracellular) - Anti-TOMM22/TOM22 antibody [EPR13505] - N-terminal (ab179826)

Intracellular flow cytometric analysis of 293T cells labeling TOMM22/TOM22 with ab179826 at 1/10 (red) or a rabbit IgG (negative) (green).



Immunoprecipitation - Anti-TOMM22/TOM22 antibody [EPR13505] - N-terminal (ab179826)

Western blot analysis on immunoprecipitation pellet from Raji cell lysate using ab179826 at 1/10 dilution for IP.

Why choose a recombinant antibody?



Research with confidence
Consistent and reproducible results



Long-term and scalable supply
Recombinant technology



Success from the first experiment
Confirmed specificity



Ethical standards compliant
Animal-free production

Anti-TOMM22/TOM22 antibody [EPR13505] - N-terminal (ab179826)

Please note: All products are "FOR RESEARCH USE ONLY. NOT FOR USE IN DIAGNOSTIC PROCEDURES"

Our Abpromise to you: Quality guaranteed and expert technical support

- Replacement or refund for products not performing as stated on the datasheet
- Valid for 12 months from date of delivery
- Response to your inquiry within 24 hours
- We provide support in Chinese, English, French, German, Japanese and Spanish
- Extensive multi-media technical resources to help you
- We investigate all quality concerns to ensure our products perform to the highest standards

If the product does not perform as described on this datasheet, we will offer a refund or replacement. For full details of the Abpromise, please visit <https://www.abcam.cn/abpromise> or contact our technical team.

Terms and conditions

- Guarantee only valid for products bought direct from Abcam or one of our authorized distributors