

### Anti-TOM1L2 antibody ab121716

#### 5 图像

#### 概述

产品名称	Anti-TOM1L2抗体
描述	兔多克隆抗体to TOM1L2
宿主	Rabbit
经测试应用	适用于: ICC/IF, IHC-P, WB
种属反应性	与反应: Mouse, Rat, Human
免疫原	antigen sequence, corresponding to amino acids 158-242 (ALSPIHTPQR SVPEVDPAAT MPRSQSQQRT SAGSYSSPPP APYSAPQAPA LSVTGPITAN SEQIARLRSE LDVVVRGNTKV MSEML) of Human TOM1L2. <a href="#">Run BLAST with Expasy</a> <a href="#">Run BLAST with NCBI</a>
阳性对照	Human heart muscle tissue; RT4, U251 MG, Human plasma, liver and tonsil lysates.
常规说明	<p>The Life Science industry has been in the grips of a reproducibility crisis for a number of years. Abcam is leading the way in addressing this with our range of recombinant monoclonal antibodies and knockout edited cell lines for gold-standard validation. Please check that this product meets your needs before purchasing.</p> <p>If you have any questions, special requirements or concerns, please send us an inquiry and/or contact our Support team ahead of purchase. Recommended alternatives for this product can be found below, along with publications, customer reviews and Q&amp;As</p>

#### 性能

形式	Liquid
存放说明	Shipped at 4°C. Upon delivery aliquot and store at -20°C. Avoid freeze / thaw cycles.
存储溶液	pH: 7.20 Preservative: 0.02% Sodium azide Constituents: 40% Glycerol (glycerin, glycerine), 59% PBS
纯度	Immunogen affinity purified
克隆	多克隆
同种型	IgG

#### 应用

The Abpromise guarantee

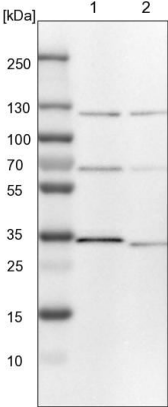
Abpromise™承诺保证使用ab121716于以下的经测试应用

“应用说明”部分 下显示的仅为推荐的起始稀释度;实际最佳的稀释度/浓度应由使用者检定。

应用	Ab评论	说明
ICC/IF		Use a concentration of 1 - 4 µg/ml. Recommend PFA Fixation and Triton X-100 treatment
IHC-P		1/200 - 1/500. Perform heat mediated antigen retrieval with citrate buffer pH 6 before commencing with IHC staining protocol.
WB		Use a concentration of 0.04 - 0.4 µg/ml.

靶标	
功能	Probable role in protein transport. May regulate growth factor-induced mitogenic signaling.
组织特异性	Ubiquitously expressed with higher expression in heart and skeletal muscle.
序列相似性	Belongs to the TOM1 family. Contains 1 GAT domain. Contains 1 VHS domain.
结构域	The GAT domain mediates interaction with TOLLIP.

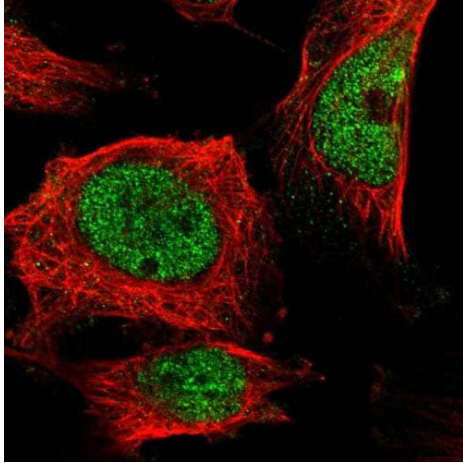
图片



Lane 1: NIH-3T3 cell lysate (Mouse embryonic fibroblast cells)

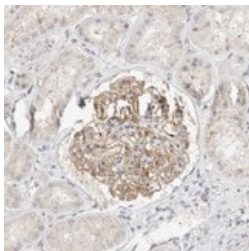
Lane 2: NBT-II cell lysate (Rat Wistar bladder tumour cells)

Western blot - Anti-TOM1L2 antibody (ab121716)



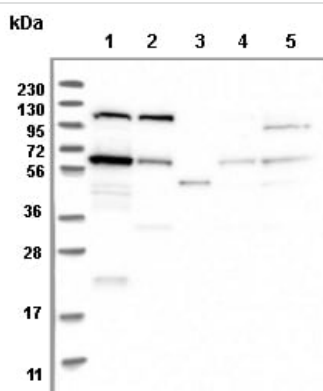
Immunocytochemistry/ Immunofluorescence - Anti-TOM1L2 antibody (ab121716)

Immunofluorescent staining of Human cell line U-251MG shows positivity in nuclei but not nucleoli. Recommended concentration of ab121716 1-4 µg/ml. Cells treated with PFA/Triton X-100.



Immunohistochemistry (Formalin/PFA-fixed paraffin-embedded sections) - Anti-TOM1L2 antibody (ab121716)

ab121716 at 1/250 dilution staining TOM1L2 in Paraffin-embedded Human heart muscle tissue by Immunohistochemistry.



Western blot - Anti-TOM1L2 antibody (ab121716)

**All lanes :** Anti-TOM1L2 antibody (ab121716) at 1/250 dilution

**Lane 1 :** RT4 cell lysate

**Lane 2 :** U251 MG cell lysate

**Lane 3 :** Human Plasma

**Lane 4 :** Human Liver tissue lysate

**Lane 5 :** Human Tonsil tissue lysate

Developed using the ECL technique.

Immunohistochemistry (Formalin/PFA-fixed paraffin-embedded sections) - Anti-TOM1L2 antibody (ab121716)

Immunohistochemical staining of Human heart muscle shows moderate cytoplasmic positivity in myocytes using ab121716

**Please note:** All products are "FOR RESEARCH USE ONLY. NOT FOR USE IN DIAGNOSTIC PROCEDURES"

### Our Abpromise to you: Quality guaranteed and expert technical support

---

- Replacement or refund for products not performing as stated on the datasheet
- Valid for 12 months from date of delivery
- Response to your inquiry within 24 hours
- We provide support in Chinese, English, French, German, Japanese and Spanish
- Extensive multi-media technical resources to help you
- We investigate all quality concerns to ensure our products perform to the highest standards

If the product does not perform as described on this datasheet, we will offer a refund or replacement. For full details of the Abpromise, please visit <https://www.abcam.cn/abpromise> or contact our technical team.

### Terms and conditions

---

- Guarantee only valid for products bought direct from Abcam or one of our authorized distributors