

# Anti-TMEM70 antibody ab106654

[2 References](#) [1 图像](#)

### 概述

产品名称	Anti-TMEM70抗体
描述	兔多克隆抗体to TMEM70
宿主	Rabbit
特异性	Two isoforms of TMEM70 are known to exist; ab106654 will only recognize Isoform 1. ab106654 is predicted not to cross-react with other TMEM proteins.
经测试应用	<b>适用于:</b> IHC-P, WB
种属反应性	<b>与反应:</b> Human
免疫原	Synthetic peptide corresponding to Human TMEM70 (internal sequence). The immunogen is located within amino acids 150 - 200 (14 amino acid synthetic peptide) of TMEM70. Database link: <a href="#">Q9BUB7</a>
阳性对照	WB: Human liver tissue lysate.
常规说明	<p>The Life Science industry has been in the grips of a reproducibility crisis for a number of years. Abcam is leading the way in addressing this with our range of recombinant monoclonal antibodies and knockout edited cell lines for gold-standard validation. Please check that this product meets your needs before purchasing.</p> <p>If you have any questions, special requirements or concerns, please send us an inquiry and/or contact our Support team ahead of purchase. Recommended alternatives for this product can be found below, along with publications, customer reviews and Q&amp;As</p>

### 性能

形式	Liquid
存放说明	Shipped at 4°C. Store at 4°C (stable for up to 12 months).
存储溶液	pH: 7.2 Preservative: 0.02% Sodium azide Constituent: PBS
纯度	Immunogen affinity purified
克隆	多克隆
同种型	IgG

## 应用

### The Abpromise guarantee

**Abpromise™** 承诺保证使用 ab106654 于以下的经测试应用

“应用说明”部分 下显示的仅为推荐的起始稀释度;实际最佳的稀释度/浓度应由使用者检定。

应用	Ab评论	说明
IHC-P		Use a concentration of 5 µg/ml. Validated in rat samples only.
WB		Use a concentration of 1 - 2 µg/ml. Predicted molecular weight: 29 kDa. Validated in human samples only.
IF		Use a concentration of 20 µg/ml. Validated in rat samples only.

## 靶标

### 功能

Involved in biogenesis of mitochondrial ATP synthase.

### 疾病相关

Defects in TMEM70 are a cause of mitochondrial encephalomyopathy neonatal due to ATP synthase deficiency (MT-ATPSD) [MIM:604273]; also known as ATPase deficiency. A mitochondrial disorder with heterogeneous clinical manifestations including dysmorphic features, psychomotor retardation, hypotonia, growth retardation, cardiomyopathy, enlarged liver, hypoplastic kidneys and elevated lactate levels in urine, plasma and cerebrospinal fluid.

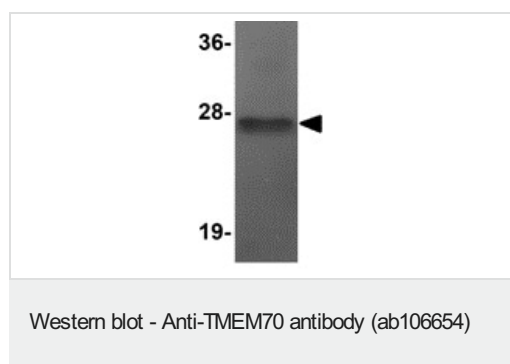
### 序列相似性

Belongs to the TMEM70 family.

### 细胞定位

Mitochondrion inner membrane.

## 图片



Anti-TMEM70 antibody (ab106654) at 1 µg/ml + Human liver tissue lysate at 15 µg

**Predicted band size: 29 kDa**

**Please note:** All products are "FOR RESEARCH USE ONLY. NOT FOR USE IN DIAGNOSTIC PROCEDURES"

## Our Abpromise to you: Quality guaranteed and expert technical support

- Replacement or refund for products not performing as stated on the datasheet
- Valid for 12 months from date of delivery
- Response to your inquiry within 24 hours
- We provide support in Chinese, English, French, German, Japanese and Spanish

- Extensive multi-media technical resources to help you
- We investigate all quality concerns to ensure our products perform to the highest standards

If the product does not perform as described on this datasheet, we will offer a refund or replacement. For full details of the Abpromise, please visit <https://www.abcam.cn/abpromise> or contact our technical team.

### **Terms and conditions**

---

- Guarantee only valid for products bought direct from Abcam or one of our authorized distributors