

Anti-TMEM59 antibody ab105417

3 图像

概述

产品名称	Anti-TMEM59抗体
描述	兔多克隆抗体to TMEM59
宿主	Rabbit
特异性	Multiple isoforms of TMEM59 are known to exist. This antibody is predicted to not cross-react with other TMEM family members.
经测试应用	适用于: WB, IHC-P
种属反应性	与反应: Human
免疫原	A 16 amino acid peptide near amino terminus of Human TMEM59 (NP_004863)
阳性对照	Human Kidney Tissue Lysate
常规说明	<p>The Life Science industry has been in the grips of a reproducibility crisis for a number of years. Abcam is leading the way in addressing this with our range of recombinant monoclonal antibodies and knockout edited cell lines for gold-standard validation. Please check that this product meets your needs before purchasing.</p> <p>If you have any questions, special requirements or concerns, please send us an inquiry and/or contact our Support team ahead of purchase. Recommended alternatives for this product can be found below, along with publications, customer reviews and Q&As</p>

性能

形式	Liquid
存放说明	Shipped at 4°C. Store at +4°C.
存储溶液	<p>pH: 7.2</p> <p>Preservative: 0.02% Sodium azide</p> <p>Constituent: PBS</p>
纯度	Immunogen affinity purified
克隆	多克隆
同种型	IgG

应用

The Abpromise guarantee Abpromise™承诺保证使用ab105417于以下的经测试应用

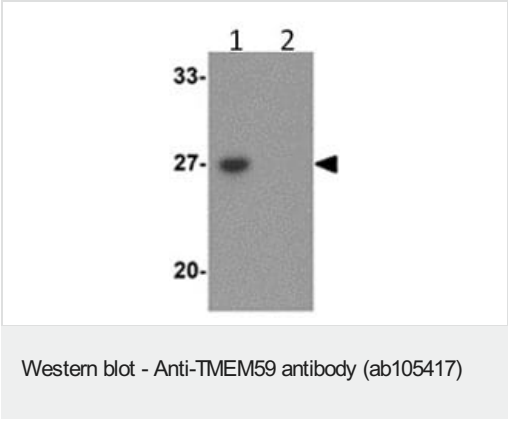
“应用说明”部分 下显示的仅为推荐的起始稀释度;实际最佳的稀释度/浓度应由使用者检定。

应用	Ab评论	说明
IF		Use a concentration of 20 µg/ml.
WB		Use a concentration of 1 - 2 µg/ml. Predicted molecular weight: 36 kDa.
IHC-P		Use a concentration of 2.5 µg/ml.

靶标

功能	Modulates the O-glycosylation and complex N-glycosylation steps occurring during the Golgi maturation of several proteins such as APP, BACE1, SEAP or PRNP. Inhibits APP transport to the cell surface and further shedding.
序列相似性	Belongs to the TMEM59 family.
翻译后修饰	N-glycosylated.
细胞定位	Golgi apparatus membrane.

图片



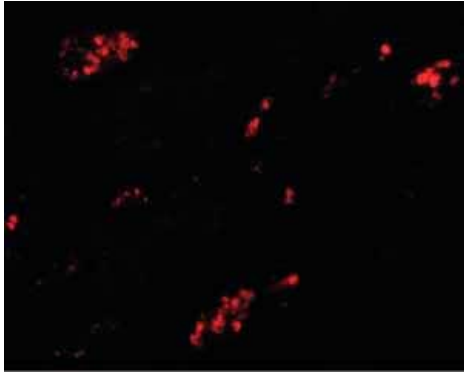
All lanes : Anti-TMEM59 antibody (ab105417) at 1 µg/ml

Lane 1 : Human kidney tissue lysate

Lane 2 : Human kidney tissue lysate with blocking peptide

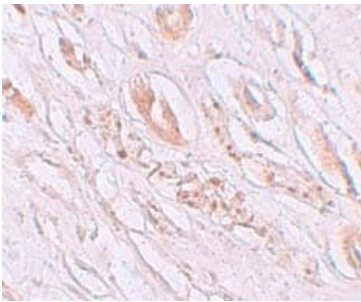
Lysates/proteins at 15 µg per lane.

Predicted band size: 36 kDa



Immunofluorescence of TMEM59 in Human kidney tissue with ab105417 at 20 µg/mL.

Immunofluorescence - Anti-TMEM59 antibody (ab105417)



Immunohistochemistry of TMEM59 in human kidney tissue with ab105417 at 2.5 µg/mL.

Immunohistochemistry paraffin embedded sections - Anti-TMEM59 antibody (ab105417)

Please note: All products are "FOR RESEARCH USE ONLY. NOT FOR USE IN DIAGNOSTIC PROCEDURES"

Our Abpromise to you: Quality guaranteed and expert technical support

- Replacement or refund for products not performing as stated on the datasheet
- Valid for 12 months from date of delivery
- Response to your inquiry within 24 hours
- We provide support in Chinese, English, French, German, Japanese and Spanish
- Extensive multi-media technical resources to help you
- We investigate all quality concerns to ensure our products perform to the highest standards

If the product does not perform as described on this datasheet, we will offer a refund or replacement. For full details of the Abpromise, please visit <https://www.abcam.cn/abpromise> or contact our technical team.

Terms and conditions

- Guarantee only valid for products bought direct from Abcam or one of our authorized distributors