


# Anti-TMEM16A antibody ab53212

★★★★☆ [5 Abreviews](#) [101 References](#) [2 图像](#)

### 概述

产品名称	Anti-TMEM16A抗体
描述	兔多克隆抗体to TMEM16A
宿主	Rabbit
经测试应用	适用于: IHC-P
种属反应性	与反应: Human 预测可用于: Mouse, Rat 
免疫原	Synthetic peptide within Human TMEM16A aa 400-500. The exact sequence is proprietary. Database link: <a href="#">Q5XXA6</a>

### 常规说明

**This product is FOR RESEARCH USE ONLY. For commercial use, please contact [partnerships@abcam.com](mailto:partnerships@abcam.com).**

The Life Science industry has been in the grips of a reproducibility crisis for a number of years. Abcam is leading the way in addressing this with our range of recombinant monoclonal antibodies and knockout edited cell lines for gold-standard validation. Please check that this product meets your needs before purchasing.

If you have any questions, special requirements or concerns, please send us an inquiry and/or contact our Support team ahead of purchase. Recommended alternatives for this product can be found below, along with publications, customer reviews and Q&As

### 性能

形式	Liquid
存放说明	Shipped at 4°C. Upon delivery aliquot and store at -20°C. Avoid freeze / thaw cycles.
存储溶液	pH: 7.60 Preservative: 0.1% Sodium azide Constituents: PBS, 1% BSA
纯度	Immunogen affinity purified
克隆	多克隆
同种型	IgG

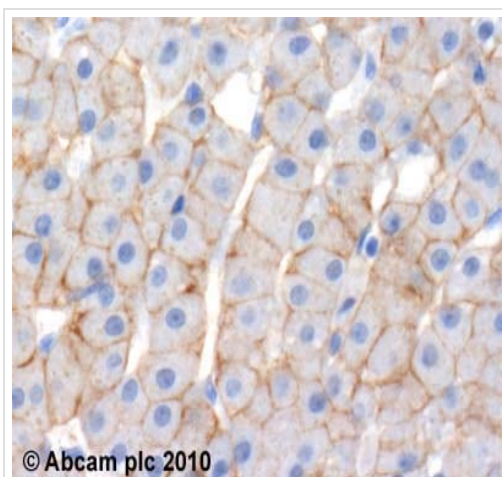
**The Abpromise guarantee**      **Abpromise™**承诺保证使用ab53212于以下的经测试应用

“应用说明”部分 下显示的仅为推荐的起始稀释度;实际最佳的稀释度/浓度应由使用者检定。

应用	Ab评论	说明
IHC-P	★★★★☆ (2)	1/100.

**靶标**

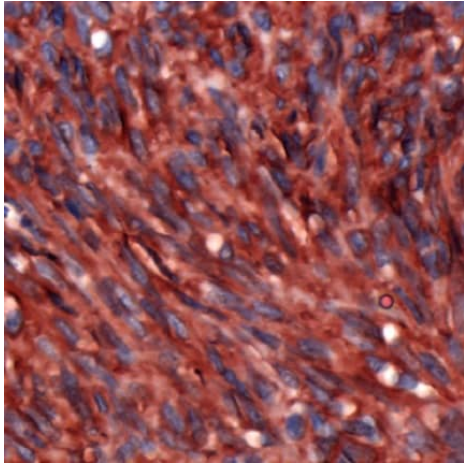
<b>功能</b>	Acts as a calcium-activated chloride channel. Required for normal tracheal development.
<b>组织特异性</b>	Broadly expressed with higher levels in liver and skeletal muscle.
<b>序列相似性</b>	Belongs to the anoctamin family.
<b>结构域</b>	The region spanning the fifth and sixth transmembrane domains probably forms the pore-forming region.
<b>细胞定位</b>	Cell membrane. Cytoplasm.

**图片**

© Abcam plc 2010

Immunohistochemistry (Formalin/PFA-fixed paraffin-embedded sections) - Anti-TMEM16A antibody (ab53212)

ab53212 (2µg/ml) staining TMEM16A in human liver (left panel) using an automated system (DAKO Autostainer Plus). Using this protocol there is strong staining of hepatocyte cell membrane. Sections were rehydrated and antigen retrieved with the Dako 3 in 1 AR buffer EDTA pH 9.0 in a DAKO PT link. Slides were peroxidase blocked in 3% H<sub>2</sub>O<sub>2</sub> in methanol for 10 mins. They were then blocked with Dako Protein block for 10 minutes (containing casein 0.25% in PBS) then incubated with primary antibody for 20 min and detected with Dako envision flex amplification kit for 30 minutes. Colorimetric detection was completed with Diaminobenzidine for 5 minutes. Slides were counterstained with Haematoxylin and coverslipped under DePeX. Please note that, for manual staining, optimization of primary antibody concentration and incubation time is recommended. Signal amplification may be required.



Immunohistochemistry (Formalin/PFA-fixed paraffin-embedded sections) analysis of human gastrointestinal stromal tumor labeling TMEM16A with ab53212.

Immunohistochemistry (Formalin/PFA-fixed paraffin-embedded sections) - Anti-TMEM16A antibody (ab53212)

**Please note:** All products are "FOR RESEARCH USE ONLY. NOT FOR USE IN DIAGNOSTIC PROCEDURES"

### Our Abpromise to you: Quality guaranteed and expert technical support

---

- Replacement or refund for products not performing as stated on the datasheet
- Valid for 12 months from date of delivery
- Response to your inquiry within 24 hours
- We provide support in Chinese, English, French, German, Japanese and Spanish
- Extensive multi-media technical resources to help you
- We investigate all quality concerns to ensure our products perform to the highest standards

If the product does not perform as described on this datasheet, we will offer a refund or replacement. For full details of the Abpromise, please visit <https://www.abcam.cn/abpromise> or contact our technical team.

### Terms and conditions

---

- Guarantee only valid for products bought direct from Abcam or one of our authorized distributors