

Anti-TLR9 antibody ab62577

[1 References](#) [2 图像](#)

概述

| | |
|-------|---|
| 产品名称 | Anti-TLR9抗体 |
| 描述 | 兔多克隆抗体to TLR9 |
| 宿主 | Rabbit |
| 经测试应用 | 适用于: ICC, WB |
| 种属反应性 | 与反应: Human |
| 免疫原 | Synthetic peptide corresponding to 15 amino acids near the center of human TLR9 |
| 阳性对照 | Jurkat cells and cell lysate. |
| 常规说明 | <p>The Life Science industry has been in the grips of a reproducibility crisis for a number of years. Abcam is leading the way in addressing this with our range of recombinant monoclonal antibodies and knockout edited cell lines for gold-standard validation. Please check that this product meets your needs before purchasing.</p> <p>If you have any questions, special requirements or concerns, please send us an inquiry and/or contact our Support team ahead of purchase. Recommended alternatives for this product can be found below, along with publications, customer reviews and Q&As</p> |

性能

| | |
|------|--|
| 形式 | Liquid |
| 存放说明 | Shipped at 4°C. Store at +4°C short term (1-2 weeks). Store at +4°C. |
| 存储溶液 | pH: 7.2 Preservative: 0.02% Sodium azide Constituent: PBS |
| 纯度 | Immunogen affinity purified |
| 克隆 | 多克隆 |
| 同种型 | IgG |

应用

The Abpromise guarantee **Abpromise™**承诺保证使用ab62577于以下的经测试应用

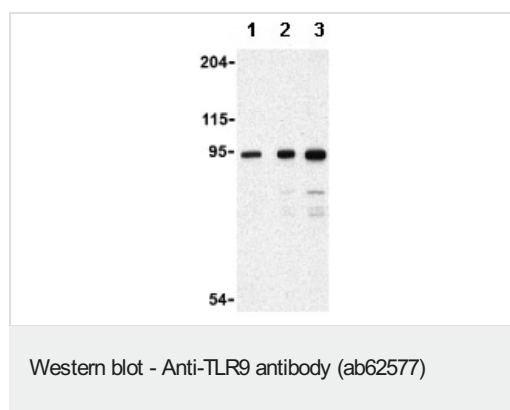
“应用说明”部分 下显示的仅为推荐的起始稀释度;实际最佳的稀释度/浓度应由使用者检定。

| 应用 | Ab评论 | 说明 |
|-----|------|---|
| ICC | | Use a concentration of 2 µg/ml. |
| WB | | Use a concentration of 0.5 - 2 µg/ml. Detects a band of approximately 95 kDa (predicted molecular weight: 115 kDa). |

靶标

| | |
|--------------|--|
| 功能 | Key component of innate and adaptive immunity. TLRs (Toll-like receptors) control host immune response against pathogens through recognition of molecular patterns specific of microorganisms. TLR9 is a nucleotide-sensing TLR which is activated by unmethylated cytidine-phosphate-guanosine (CpG) dinucleotides. Acts via MYD88 and TRAF6, leading to NF-kappa-B activation, cytokine secretion and the inflammatory response. |
| 组织特异性 | Highly expressed in spleen, lymph node, tonsil and peripheral blood leukocytes, especially in plasmacytoid pre-dendritic cells. Levels are much lower in monocytes and CD11c+ immature dendritic cells. Also detected in lung and liver. |
| 序列相似性 | Belongs to the Toll-like receptor family. Contains 26 LRR (leucine-rich) repeats. Contains 1 TIR domain. |
| 细胞定位 | Endoplasmic reticulum membrane. Endosome. Lysosome. Cytoplasmic vesicle > phagosome. Relocalizes from endoplasmic reticulum to endosome and lysosome upon stimulation with agonist. |

图片



Lane 1 : Anti-TLR9 antibody (ab62577) at 0.5 µg/ml

Lane 2 : Anti-TLR9 antibody (ab62577) at 1 µg/ml

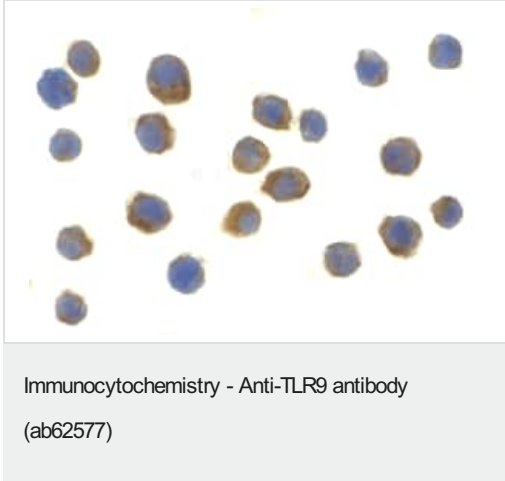
Lane 3 : Anti-TLR9 antibody (ab62577) at 2 µg/ml

All lanes : Jurkat cell lysate

Lysates/proteins at 15 µg per lane.

Predicted band size: 115 kDa

Observed band size: 95 kDa



ab62577 at 2µg/ml staining TLR9 in Jurkat cells by Immunocytochemistry.

Please note: All products are "FOR RESEARCH USE ONLY. NOT FOR USE IN DIAGNOSTIC PROCEDURES"

Our Abpromise to you: Quality guaranteed and expert technical support

- Replacement or refund for products not performing as stated on the datasheet
- Valid for 12 months from date of delivery
- Response to your inquiry within 24 hours
- We provide support in Chinese, English, French, German, Japanese and Spanish
- Extensive multi-media technical resources to help you
- We investigate all quality concerns to ensure our products perform to the highest standards

If the product does not perform as described on this datasheet, we will offer a refund or replacement. For full details of the Abpromise, please visit <https://www.abcam.cn/abpromise> or contact our technical team.

Terms and conditions

- Guarantee only valid for products bought direct from Abcam or one of our authorized distributors