

Anti-TLR3 antibody [40C1285] ab13915

★★★★★ **3 Abreviews** **24 References** **8 图像**

概述

产品名称	Anti-TLR3抗体[40C1285]
描述	小鼠单克隆抗体[40C1285] to TLR3
宿主	Mouse
特异性	Negative results in WB have been obtained for mouse intestine lysates (human intestine is a positive control). The protein is heavily glycosylated and the observed band size should be higher than the predicted 103kDa. The protein is found at different molecular weight in different tissues so optimization may be necessary.
经测试应用	适用于: IHC-P, Flow Cyt (Intra), WB
种属反应性	与反应: Mouse, Human
免疫原	Synthetic peptide corresponding to Human TLR3 aa 50-150 conjugated to keyhole limpet haemocyanin. Database link: O15455
阳性对照	Human intestine tissue lysate, mouse spleen Flow Cyt (Intra): human B cells, human monocytes, SW480, SW620 (colon cancer)
常规说明	<p>The Life Science industry has been in the grips of a reproducibility crisis for a number of years. Abcam is leading the way in addressing this with our range of recombinant monoclonal antibodies and knockout edited cell lines for gold-standard validation. Please check that this product meets your needs before purchasing.</p> <p>If you have any questions, special requirements or concerns, please send us an inquiry and/or contact our Support team ahead of purchase. Recommended alternatives for this product can be found below, along with publications, customer reviews and Q&As</p>

 [Run BLAST with](#)

 [Run BLAST with](#)

性能

形式	Liquid
存放说明	Shipped at 4°C. Store at +4°C short term (1-2 weeks). Upon delivery aliquot. Store at -20°C or -80°C. Avoid freeze / thaw cycle.
存储溶液	pH: 7.4 Preservative: 0.05% Sodium azide Constituents: PBS, 0.05% BSA

纯度	Protein G purified
克隆	单克隆
克隆编号	40C1285
同种型	IgG1

应用

The Abpromise guarantee **Abpromise™**承诺保证使用ab13915于以下的经测试应用

“应用说明”部分 下显示的仅为推荐的起始稀释度;实际最佳的稀释度/浓度应由使用者检定。

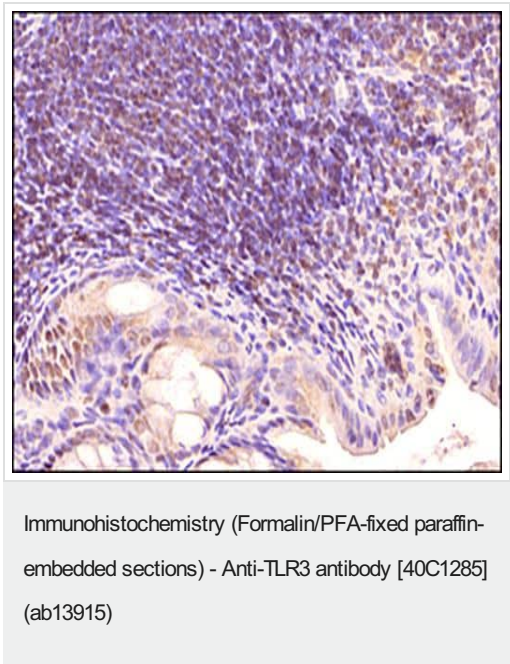
应用	Ab评论	说明
IHC-P		Use a concentration of 5 - 10 µg/ml. Permeabilization of samples might be necessary and overnight incubation with the ab13915 is recommended.
Flow Cyt (Intra)		Use 2-5µg for 10 ⁶ cells. ab170190 - Mouse monoclonal IgG1, is suitable for use as an isotype control with this antibody.
WB	★★★★★ (1)	Use a concentration of 1 - 3 µg/ml. Detects a band of approximately 130 kDa (predicted molecular weight: 108 kDa). TLR3 is a single-pass type I membrane protein. We recomend not to boil the samples, instead heat lysates at 60-70C for 10 minutes.

靶标

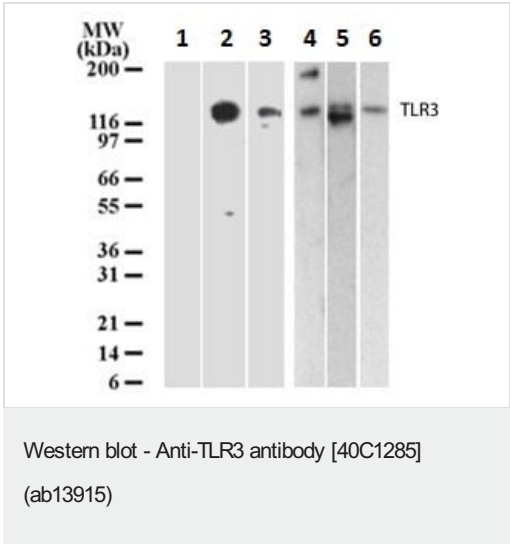
功能	Key component of innate and adaptive immunity. TLRs (Toll-like receptors) control host immune response against pathogens through recognition of molecular patterns specific of microorganisms. TLR3 is a nucleotide-sensing TLR which is activated by double-stranded RNA, a sign of viral infection. Acts via MYD88 and TRAF6, leading to NF-kappa-B activation, cytokine secretion and the inflammatory response.
组织特异性	Expressed at high level in placenta and pancreas. Also detected in CD11c+ immature dendritic cells. Only expressed in dendritic cells and not in other leukocytes, including monocyte precursors. TLR3 is the TLR that is expressed most strongly in the brain, especially in astrocytes, glia, and neurons.
疾病相关	Defects in TLR3 are associated with herpes simplex encephalitis type 2 (HSE2) [MIM:613002]. HSE is a rare complication of human herpesvirus 1 (HHV-1) infection, occurring in only a small minority of HHV-1 infected individuals. HSE is characterized by hemorrhagic necrosis of parts of the temporal and frontal lobes. Onset is over several days and involves fever, headache, seizures, stupor, and often coma, frequently with a fatal outcome. Note=TLR3 mutations predispose otherwise healthy individuals to isolated herpes simplex encephalitis through a mechanism that involves impaired IFNs production and reduced immune defense against viral infection in the central nervous system.
序列相似性	Belongs to the Toll-like receptor family. Contains 22 LRR (leucine-rich) repeats. Contains 1 LRRCT domain.

	Contains 1 LRRNT domain.
	Contains 1 TIR domain.
结构域	ds-RNA binding is mediated by LRR 1 to 3, and LRR 17 to 18.
翻译后修饰	Heavily N-glycosylated, except on that part of the surface of the ectodomain that is involved in ligand binding.
细胞定位	Endoplasmic reticulum membrane. Endosome membrane.

图片



Immunohistochemical analysis of formalin fixed paraffin embedded tissue section of mouse intestine using ab13915 at 1/500 dilution with HRP-DAB detection and hematoxylin counterstaining. The image shows a punctate staining of the ER and endosomes in a subset of cells in Peyer's patches (organized lymphoid nodules) in the tested section.

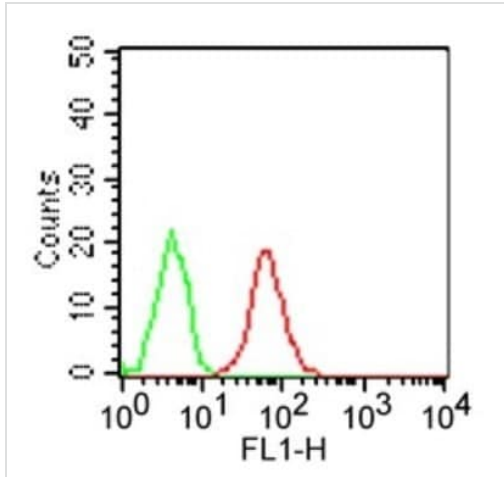


All lanes : Anti-TLR3 antibody [40C1285] (ab13915) at 3 µg/ml

- Lane 1 :** Untransfected HEK293 cell lysate
- Lane 2 :** HEK293 cell lysate transfected with human TLR3 cDNA whole cell lysate
- Lane 3 :** Human intestine tissue lysate
- Lane 4 :** Human placenta tissue lysate
- Lane 5 :** Human heart tissue lysate
- Lane 6 :** Human ovary tissue lysate

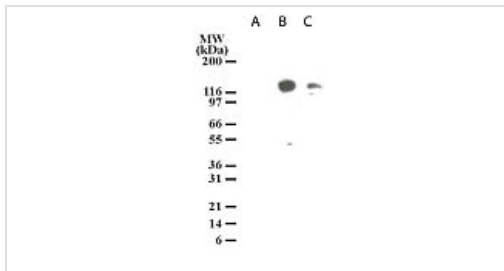
Secondary
All lanes : Goat anti-mouse HRP conjugate

Predicted band size: 108 kDa



Flow cytometry (Intracellular) analysis of human B cells using ab13915 at $1\mu\text{g}/10^6$ cells followed by FITC conjugated secondary antibody (Red). Green shows isotype control.

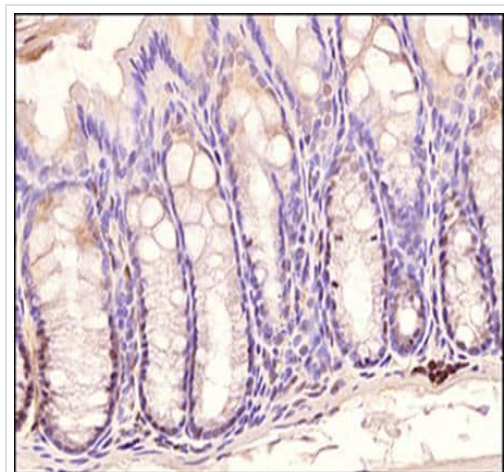
Flow Cytometry (Intracellular) - Anti-TLR3 antibody [40C1285] (ab13915)



Western blot analysis of TLR3 in lysates from untransfected 293 cells (lane A), 293 cells transfected with human TLR3 cDNA (lane B), and 20 $\mu\text{g}/\text{lane}$ human intestine tissue lysate (lane C).

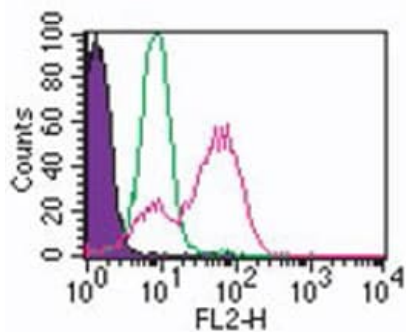
Western blot analysis of TLR3 in lysates from untransfected 293 cells (lane A), 293 cells transfected with human TLR3 cDNA (lane B), and 20 $\mu\text{g}/\text{lane}$ human intestine tissue lysate (lane C).

Western blot - Anti-TLR3 antibody [40C1285] (ab13915)



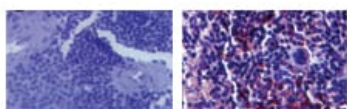
Immunohistochemical analysis of formalin fixed paraffin embedded tissue section of mouse colon using ab13915 at 1/500 dilution with HRP-DAB detection and hematoxylin counterstaining. Intense signal was found in subset of cells at the bases of the crypts.

Immunohistochemistry (Formalin/PFA-fixed paraffin-embedded sections) - Anti-TLR3 antibody [40C1285] (ab13915)



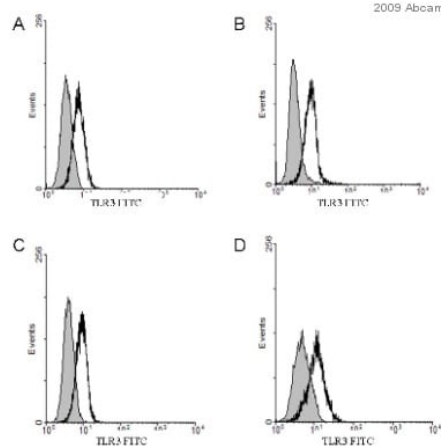
Flow Cytometry (Intracellular) - Anti-TLR3 antibody
[40C1285] (ab13915)

ab13915 at 2 μ g / 1x10⁶ cells staining intracellular TLR3 in human monocytes by Flow Cyt (Intra). A PE-conjugated goat polyclonal to mouse IgG1 was used as secondary. The shaded histogram represents monocytes without antibody; green represents isotype control and red histogram shows staining with ab13915.



Immunohistochemistry (Formalin/PFA-fixed paraffin-embedded sections) - Anti-TLR3 antibody [40C1285] (ab13915)

ab13915 at 5 μ g/ml staining TLR3 in mouse spleen tissue section by Immunohistochemistry (Formalin/ PFA fixed paraffin-embedded sections). The left image represents staining with isotype control and right one represents staining with ab13915.



Flow Cytometry (Intracellular) - Anti-TLR3 antibody
[40C1285] (ab13915)

This image is a courtesy of Tanja Matijevic

ab13915 staining TLR3 in SW480, SW620 (colon cancer) and FaDu, Detroit 562 obtained from human cells by Flow Cytometry. Samples were prepared by trypsinizing and washing in PBS and centrifugation in a buffer containing 2% FBS, 0.1% Na-azide and PBS. Cells were fixed in paraformaldehyde and permeabilized in 0.2% Tween. Gating and analysis was performed by WinMDI 2.9 software. The primary antibody was diluted to 1 μ g/cells (PBS, 2% FBS and 0.1% Na-azide) and incubated with sample for 30 minutes at 4°C. An FITC conjugated rabbit polyclonal to mouse IgG, diluted to 1/40, was used as secondary. Image represents FACS analysis of TLR3 protein expression in SW480 (A), SW620 (B), FaDu (C) and Detroit 562 (D) cell lines. Cell lines were permeabilized and immunostained with TLR3-specific antibody (thick black l

Please note: All products are "FOR RESEARCH USE ONLY. NOT FOR USE IN DIAGNOSTIC PROCEDURES"

Our Abpromise to you: Quality guaranteed and expert technical support

- Replacement or refund for products not performing as stated on the datasheet
- Valid for 12 months from date of delivery
- Response to your inquiry within 24 hours

- We provide support in Chinese, English, French, German, Japanese and Spanish
- Extensive multi-media technical resources to help you
- We investigate all quality concerns to ensure our products perform to the highest standards

If the product does not perform as described on this datasheet, we will offer a refund or replacement. For full details of the Abpromise, please visit <https://www.abcam.cn/abpromise> or contact our technical team.

Terms and conditions

- Guarantee only valid for products bought direct from Abcam or one of our authorized distributors