


### Anti-TLR2 antibody [TL2.1] ab9100

★★★★★ [9 Abreviews](#) [36 References](#) [2 图像](#)

#### 概述

|       |   |
|-------|---|
| 产品名称  | Anti-TLR2抗体[TL2.1]  |
| 描述    | 小鼠单克隆抗体[TL2.1] to TLR2  |
| 宿主    | Mouse   |
| 经测试应用 | 适用于: IP, Functional Studies, Flow Cyt, WB, Neutralising, ICC/IF   |
| 种属反应性 | 与反应: Human, Common marmoset<br>预测可用于: Dog, Monkey, Cynomolgus monkey, Rhesus monkey    |
| 免疫原   | Recombinant human TLR2 produced by the CHO/CD14 reporter cell line.   |
| 阳性对照  | WB: THP1 + LPS. IHC-P: Human TLR2. ICC: Human U937 cells. Flow: Human peripheral blood mononuclear cells.   |
| 常规说明  | <p>Ab9100 is a TLR2 function blocking antibody that is useful for studies on the role of TLR2 as a pattern recognition receptor in microbial products induced cytokine production by TLR2 bearing cells such as human peripheral blood mononuclear cells.</p> <p>The Life Science industry has been in the grips of a reproducibility crisis for a number of years. Abcam is leading the way in addressing this with our range of recombinant monoclonal antibodies and knockout edited cell lines for gold-standard validation. Please check that this product meets your needs before purchasing.</p> <p>If you have any questions, special requirements or concerns, please send us an inquiry and/or contact our Support team ahead of purchase. Recommended alternatives for this product can be found below, along with publications, customer reviews and Q&amp;As</p> |

#### 性能

|                    |  |
|--------------------|--|
| 形式                 | Liquid   |
| 存放说明               | Shipped at 4°C. Upon delivery aliquot and store at -20°C. Avoid freeze / thaw cycles.  |
| 存储溶液               | Constituents: PBS, 1% BSA  |
| 纯度                 | Protein G purified   |
| 纯化说明               | 0.2 µm filtered  |
| Primary antibody说明 | Ab9100 is a TLR2 function blocking antibody that is useful for studies on the role of TLR2 as a pattern recognition receptor in microbial products induced cytokine production by TLR2 bearing cells such as human peripheral blood mononuclear cells. |

|      |       |
|------|-------|
| 克隆   | 单克隆   |
| 克隆编号 | TL2.1 |
| 同种型  | IgG2a |

## 应用

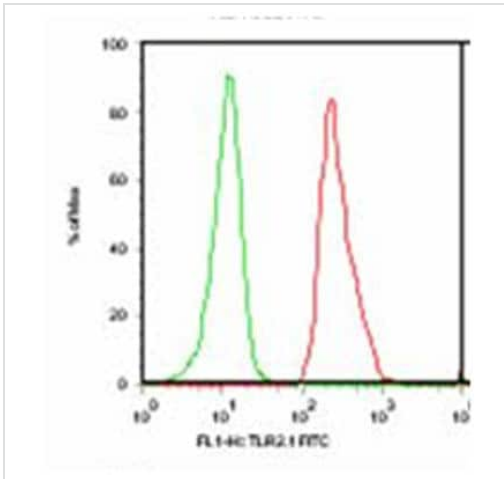
**The Abpromise guarantee**      **Abpromise™**承诺保证使用ab9100于以下的经测试应用

“应用说明”部分下显示的仅为推荐的起始稀释度;实际最佳的稀释度/浓度应由使用者检定。

| 应用                 | Ab评论          | 说明  |
|--------------------|---------------|---|
| IP                 |               | Use at an assay dependent concentration.  |
| Functional Studies |               | Use at an assay dependent concentration.  |
| Flow Cyt           | ★ ★ ★ ★ ★ (1) | Use 2-3µg for 10 <sup>5</sup> cells.<br>Untreated and 0.4 % formaldehyde fixed cells can be used; do not permeabilize the cells.<br><b>ab170191</b> - Mouse monoclonal IgG2a, is suitable for use as an isotype control with this antibody. |
| WB                 | ★ ★ ★ ★ ★ (3) | 1/50. Abcam recommends using non-reducing conditions.   |
| Neutralising       |               | Use at an assay dependent concentration. See Lien et al.  |
| ICC/IF             | ★ ★ ★ ★ ★ (1) | Use at an assay dependent concentration.<br>Fix with PBS/2% formalin for 15 min at 4 degree C; permeabilize with acetone, 10 min, -20 degree C (see Flo et al J Leukoc Biol which used a conjugated form of the antibody).                  |

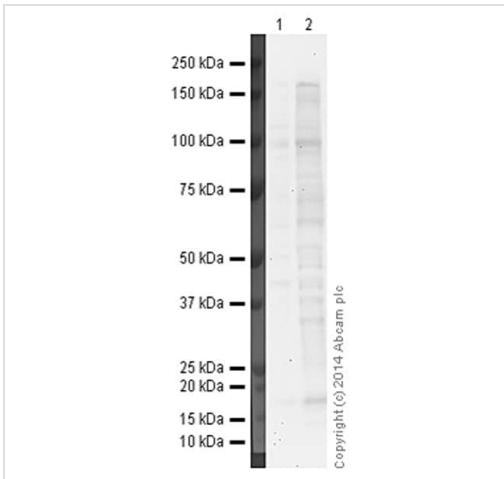
## 靶标

|       |  |
|-------|--|
| 功能    | Cooperates with LY96 to mediate the innate immune response to bacterial lipoproteins and other microbial cell wall components. Cooperates with TLR1 to mediate the innate immune response to bacterial lipoproteins or lipopeptides. Acts via MYD88 and TRAF6, leading to NF-kappa-B activation, cytokine secretion and the inflammatory response. May also promote apoptosis in response to lipoproteins. Recognizes mycoplasmal macrophage-activating lipopeptide-2kD (MALP-2), soluble tuberculosis factor (STF), phenol-soluble modulins (PSM) and B.burgdorferi outer surface protein A lipoprotein (OspA-L) cooperatively with TLR6. |
| 组织特异性 | Highly expressed in peripheral blood leukocytes, in particular in monocytes, in bone marrow, lymph node and in spleen. Also detected in lung and in fetal liver. Levels are low in other tissues.  |
| 序列相似性 | Belongs to the Toll-like receptor family.<br>Contains 14 LRR (leucine-rich) repeats.<br>Contains 1 TIR domain.   |
| 翻译后修饰 | Glycosylation of Asn-442 is critical for secretion of the N-terminal ectodomain of TLR2.   |
| 细胞定位  | Membrane.  |



Flow Cytometry - Anti-TLR2 antibody [TL2.1] (ab9100)

TLR2 staining on human peripheral blood mononuclear cells by using ab9100. Green: CD3+ cells; Red: CD14+ cells



Western blot - Anti-TLR2 antibody [TL2.1] (ab9100)

**All lanes :** Anti-TLR2 antibody [TL2.1] (ab9100) at 1 µg/ml

**Lane 1 :** THP1

**Lane 2 :** THP1 + LPS

Lysates/proteins at 20 µg per lane.

**Secondary**

**All lanes :** Goat Anti-Mouse IgG H&L (HRP) preadsorbed (**ab97040**) at 1/50000 dilution

Performed under reducing conditions.

This blot was produced using a 4-12% Bis-Tris gel under the MOPS buffer system. The gel was ran at 200V for 60 minutes before being transferred onto a nitrocellulose membrane at 30V for 70 minutes. The membrane was then blocked with 2% BSA for 60 minutes before being incubated with ab9100 (anti-TLR2 antibody; 1 ug/mL) for 18 hours at 4°C. Antibody binding was detected using **ab97040** (HRP-labelled goat anti-mouse IgG) at 1:50,000 dilutions for 1 hour at room temperature. Visualisation was conducted using ECL development solution **ab133406**.

This gel was run under reducing conditions resulting in weak signal. We recommend customers to use non-reducing conditions.

**Please note:** All products are "FOR RESEARCH USE ONLY. NOT FOR USE IN DIAGNOSTIC PROCEDURES"

### **Our Abpromise to you: Quality guaranteed and expert technical support**

---

- Replacement or refund for products not performing as stated on the datasheet
- Valid for 12 months from date of delivery
- Response to your inquiry within 24 hours
  
- We provide support in Chinese, English, French, German, Japanese and Spanish
- Extensive multi-media technical resources to help you
- We investigate all quality concerns to ensure our products perform to the highest standards

If the product does not perform as described on this datasheet, we will offer a refund or replacement. For full details of the Abpromise, please visit <https://www.abcam.cn/abpromise> or contact our technical team.

### **Terms and conditions**

---

- Guarantee only valid for products bought direct from Abcam or one of our authorized distributors