




# Anti-Tissue kallikrein antibody ab169291

## 2 图像

### 概述

<b>产品名称</b>	Anti-Tissue kallikrein抗体
<b>描述</b>	小鼠多克隆抗体to组织kallikrein
<b>宿主</b>	Mouse
<b>经测试应用</b>	<b>适用于:</b> WB, IHC-P
<b>种属反应性</b>	<b>与反应:</b> Human <b>预测可用于:</b> Baboon, Cynomolgus monkey 
<b>免疫原</b>	Recombinant full length protein within Human Tissue kallikrein aa 1-300. The exact immunogen sequence used to generate this antibody is proprietary information. If additional detail on the immunogen is needed to determine the suitability of the antibody for your needs, please <b>contact</b> our Scientific Support team to discuss your requirements. Database link: <a href="#">NP_002248.1</a>  <a href="#">Run BLAST with</a>  <a href="#">Run BLAST with</a>
<b>阳性对照</b>	IHC-P: Human salivary gland tissue. WB: Tissue kallikrein transfected 293T cell line.
<b>常规说明</b>	The Life Science industry has been in the grips of a reproducibility crisis for a number of years. Abcam is leading the way in addressing this with our range of recombinant monoclonal antibodies and knockout edited cell lines for gold-standard validation. Please check that this product meets your needs before purchasing.  If you have any questions, special requirements or concerns, please send us an inquiry and/or contact our Support team ahead of purchase. Recommended alternatives for this product can be found below, along with publications, customer reviews and Q&As

### 性能

<b>形式</b>	Liquid
<b>存放说明</b>	Shipped at 4°C. Store at +4°C short term (1-2 weeks). Upon delivery aliquot. Store at -20°C long term.
<b>存储溶液</b>	pH: 7.4 Constituent: 100% PBS
<b>纯度</b>	Protein A purified
<b>克隆</b>	多克隆
<b>同种型</b>	IgG

## 应用

**The Abpromise guarantee**      **Abpromise™**承诺保证使用ab169291于以下的经测试应用

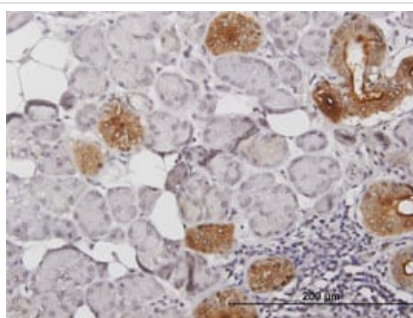
“应用说明”部分 下显示的仅为推荐的起始稀释度;实际最佳的稀释度/浓度应由使用者检定。

应用	Ab评论	说明
WB		Use a concentration of 1 µg/ml. Predicted molecular weight: 29 kDa.
IHC-P		Use a concentration of 3 µg/ml.

## 靶标

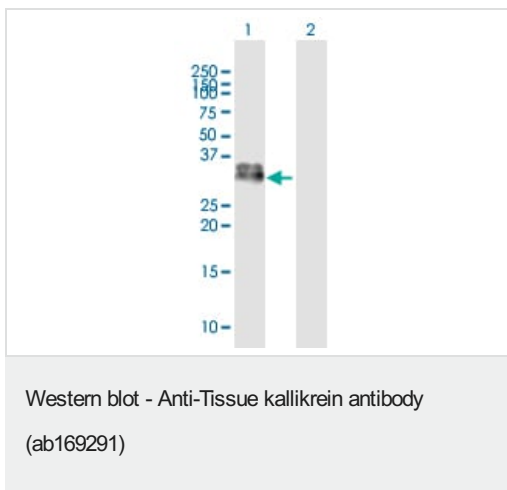
<b>功能</b>	Glandular kallikreins cleave Met-Lys and Arg-Ser bonds in kininogen to release Lys-bradykinin.
<b>组织特异性</b>	Isoform 2 is expressed in pancreas, salivary glands, kidney, colon, prostate gland, testis, spleen and the colon adenocarcinoma cell line T84.
<b>序列相似性</b>	Belongs to the peptidase S1 family. Kallikrein subfamily. Contains 1 peptidase S1 domain.
<b>翻译后修饰</b>	The O-linked polysaccharides on Ser-93, Ser-104 and Ser-167 are probably the mucin type linked to GalNAc. In PubMed:3163150, GalNAc was detected with the corresponding peptides but not located.

## 图片



Immunohistochemical analysis of formalin-fixed paraffin-embedded Human salivary gland tissue, labelling Tissue kallikrein with ab169291 at 3 µg/ml.

Immunohistochemistry (Formalin/PFA-fixed paraffin-embedded sections) - Anti-Tissue kallikrein antibody (ab169291)



**All lanes :** Anti-Tissue kallikrein antibody (ab169291) at 1 µg/ml

**Lane 1 :** Tissue kallikrein transfected 293T lysate

**Lane 2 :** Non-transfected 293T lysate

Lysates/proteins at 15 µl per lane.

**Predicted band size:** 29 kDa

**Please note:** All products are "FOR RESEARCH USE ONLY. NOT FOR USE IN DIAGNOSTIC PROCEDURES"

### Our Abpromise to you: Quality guaranteed and expert technical support

- Replacement or refund for products not performing as stated on the datasheet
- Valid for 12 months from date of delivery
- Response to your inquiry within 24 hours
- We provide support in Chinese, English, French, German, Japanese and Spanish
- Extensive multi-media technical resources to help you
- We investigate all quality concerns to ensure our products perform to the highest standards

If the product does not perform as described on this datasheet, we will offer a refund or replacement. For full details of the Abpromise, please visit <https://www.abcam.cn/abpromise> or contact our technical team.

### Terms and conditions

- Guarantee only valid for products bought direct from Abcam or one of our authorized distributors