


Anti-TIPE2 antibody ab110389

10 References 1 图像

概述	
产品名称	Anti-TIPE2抗体
描述	兔多克隆抗体to TIPE2
宿主	Rabbit
经测试应用	适用于: WB
种属反应性	与反应: Human 预测可用于: Mouse, Rat 
免疫原	Synthetic peptide corresponding to Human TIPE2 (internal sequence).
阳性对照	WB: Extracts from HuvEc cells.
常规说明	<p>The Life Science industry has been in the grips of a reproducibility crisis for a number of years. Abcam is leading the way in addressing this with our range of recombinant monoclonal antibodies and knockout edited cell lines for gold-standard validation. Please check that this product meets your needs before purchasing.</p> <p>If you have any questions, special requirements or concerns, please send us an inquiry and/or contact our Support team ahead of purchase. Recommended alternatives for this product can be found below, along with publications, customer reviews and Q&As</p>
性能	
形式	Liquid
存放说明	Shipped at 4°C. Store at -20°C. Stable for 12 months at -20°C.
存储溶液	pH: 7.40 Preservative: 0.02% Sodium azide Constituents: PBS, 50% Glycerol, 0.88% Sodium chloride
纯度	Immunogen affinity purified
克隆	多克隆
同种型	IgG
应用	

“应用说明”部分 下显示的仅为推荐的起始稀释度;实际最佳的稀释度/浓度应由使用者检定。

应用	Ab评论	说明
WB		1/500 - 1/1000. Predicted molecular weight: 21 kDa.

靶标

功能

Acts as a negative regulator of innate and adaptive immunity by maintaining immune homeostasis. Negative regulator of Toll-like receptor and T-cell receptor function. Prevents hyperresponsiveness of the immune system and maintains immune homeostasis. Inhibits JUN/AP1 and NF-kappa-B activation. Promotes Fas-induced apoptosis.

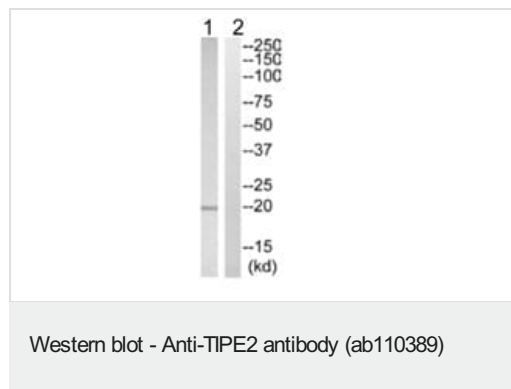
序列相似性

Belongs to the TNFAIP8 family. TNFAIP8L2 subfamily.

结构域

The central region was initially thought to constitute a DED (death effector) domain. However, 3D-structure data reveal a previously uncharacterized fold that is different from the predicted fold of a DED (death effector) domain. It consists of a large, hydrophobic central cavity that is poised for cofactor binding.

图片



All lanes : Anti-TIPE2 antibody (ab110389) at 1/500 dilution

Lane 1 : Extracts from HuvEc cells

Lane 2 : Extracts from HuvEc cells with blocking peptide at 10 µg

Lysates/proteins at 30 µg per lane.

Predicted band size: 21 kDa

Please note: All products are "FOR RESEARCH USE ONLY. NOT FOR USE IN DIAGNOSTIC PROCEDURES"

Our Abpromise to you: Quality guaranteed and expert technical support

- Replacement or refund for products not performing as stated on the datasheet
- Valid for 12 months from date of delivery
- Response to your inquiry within 24 hours
- We provide support in Chinese, English, French, German, Japanese and Spanish
- Extensive multi-media technical resources to help you
- We investigate all quality concerns to ensure our products perform to the highest standards

If the product does not perform as described on this datasheet, we will offer a refund or replacement. For full details of the Abpromise, please visit <https://www.abcam.cn/abpromise> or contact our technical team.

Terms and conditions

- Guarantee only valid for products bought direct from Abcam or one of our authorized distributors